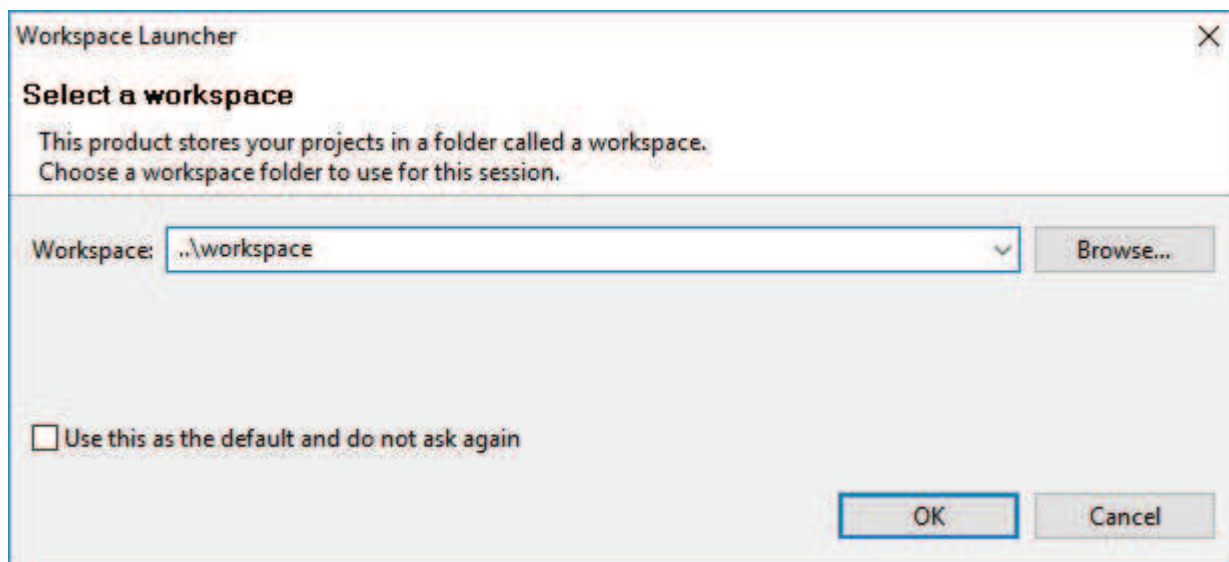


[Time4Sys](#) > [FirstStep](#)

Time4Sys First Steps

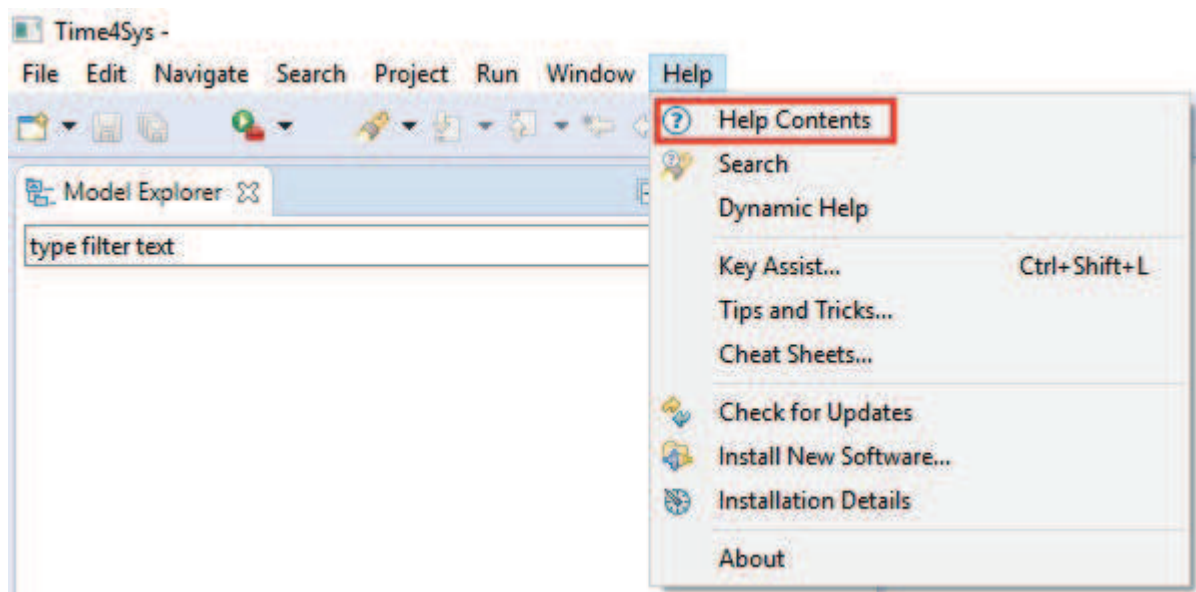
First Launch

Select the workspace which is the path of the folder that will contain all the project you will work on (by default).



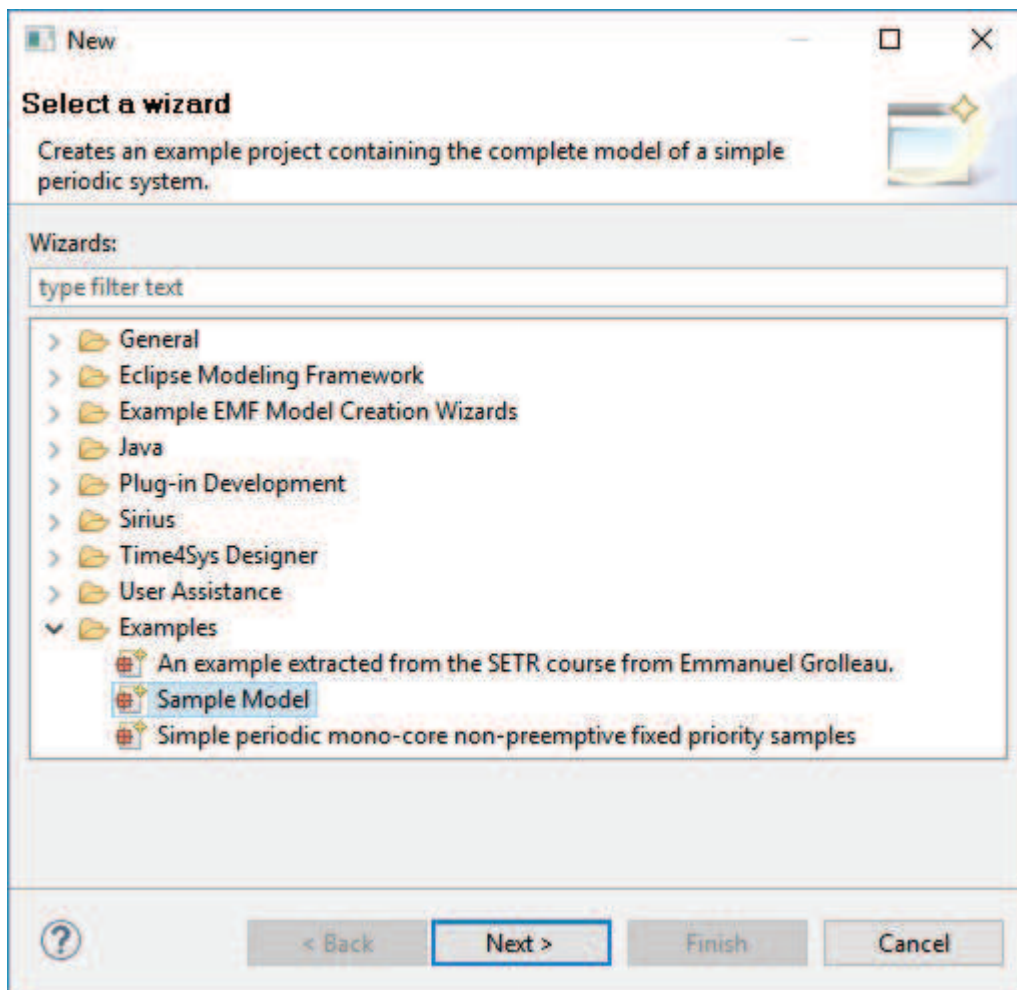
Access to Eclipse Help

The online documentation is also embedded in Time4Sys and can be accessed on the Help Contents.

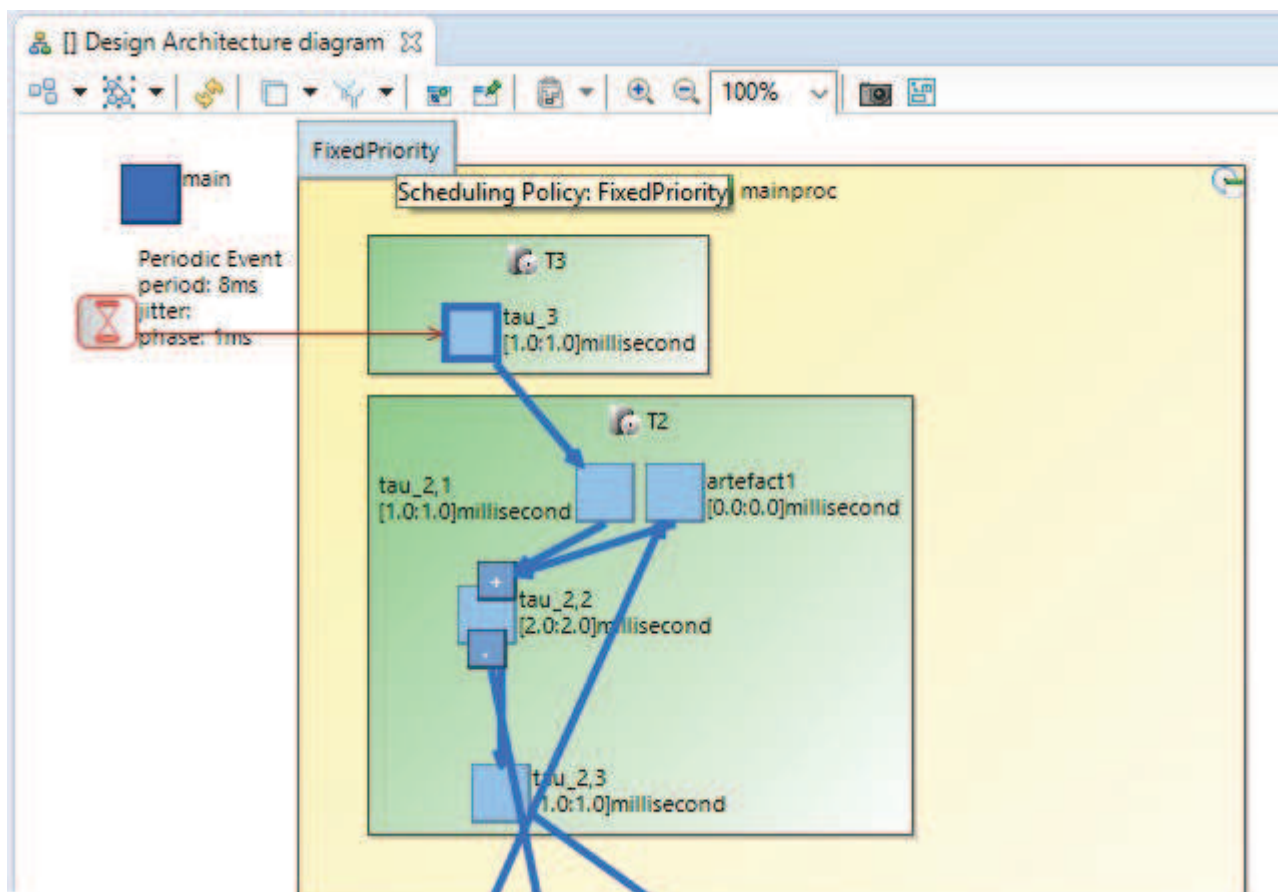


Sample Project Creation

On the Model Explorer View, right click on New -> Other And select in the example the sample project that you want to import:

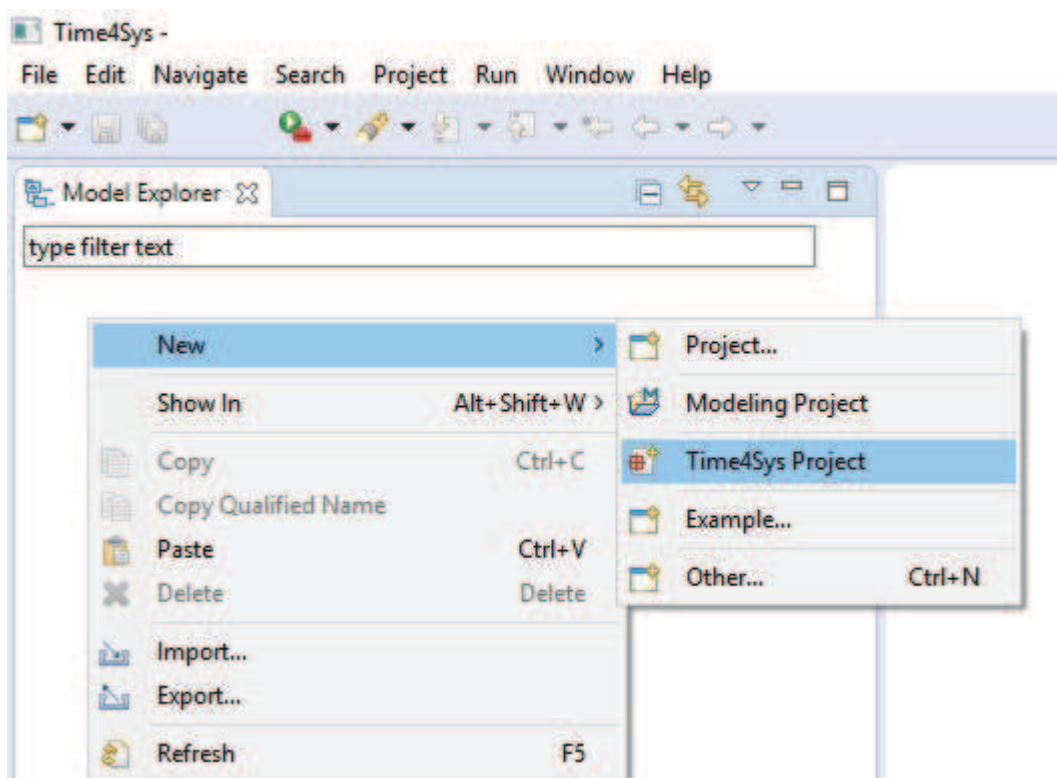


Open the project created on the Model Explorer view and double click on the representations.aird file. This shall open the design model diagram:



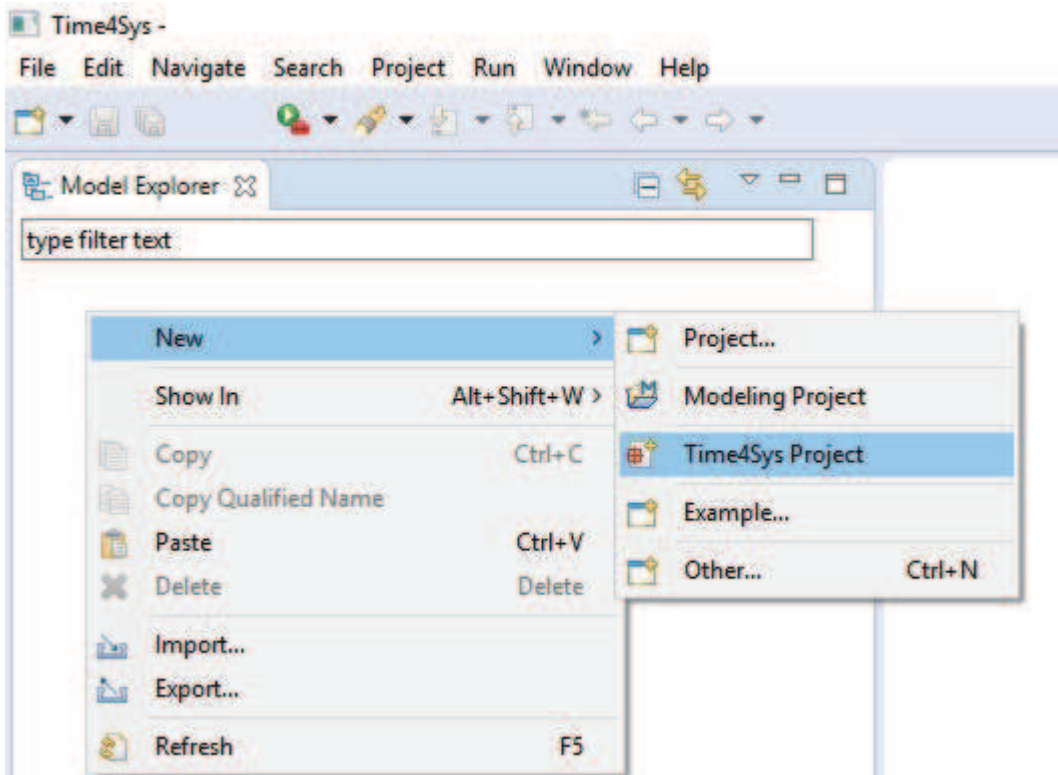
Project Creation

To create a new project, you have to be on the Model Explorer View, right click -> New -> Time4Sys Project.

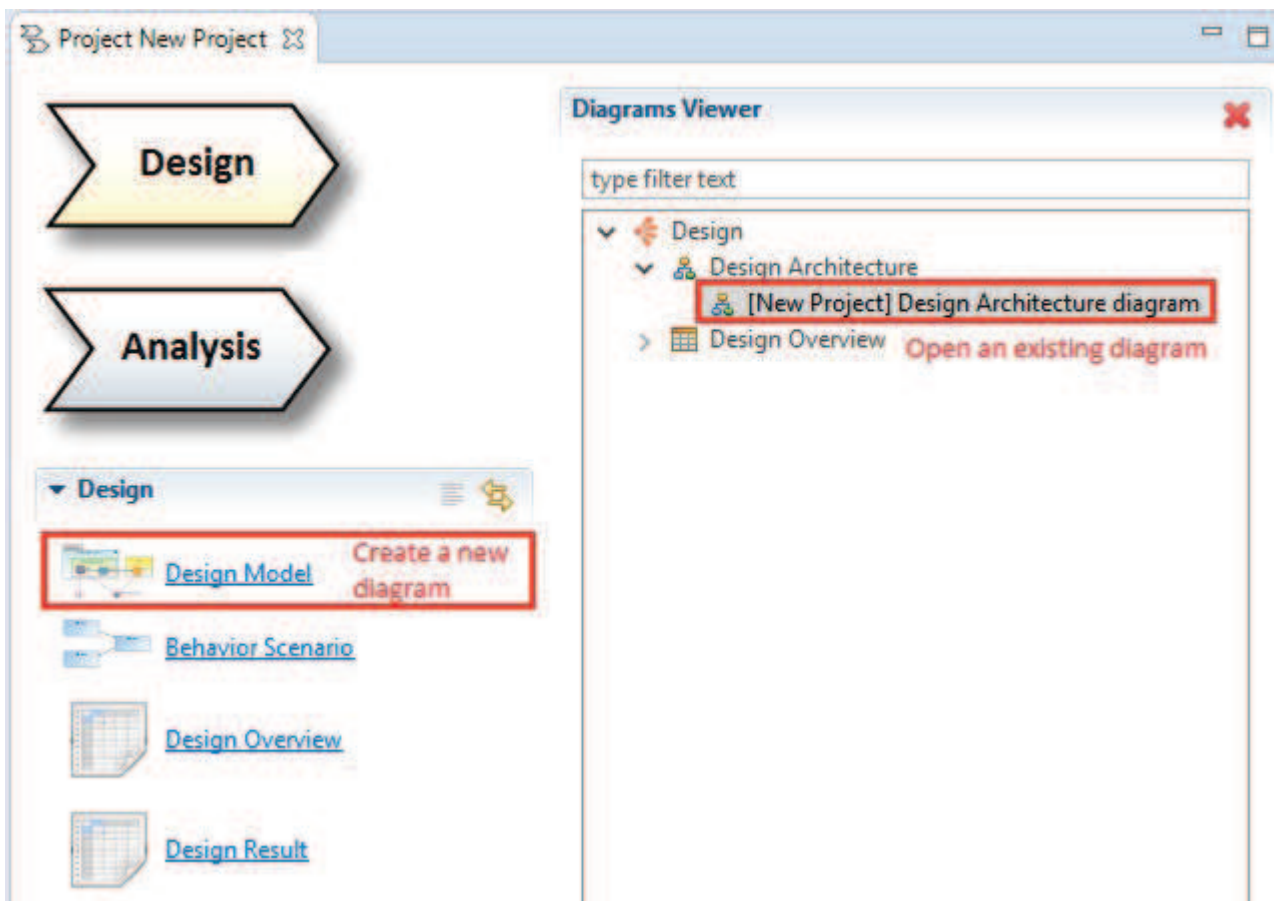


This will open a popup asking you to rename your project, once done, select finish.

After that, your project is created and you can chose to edit the design or the analysis models.



Open your first diagram or create a new one:

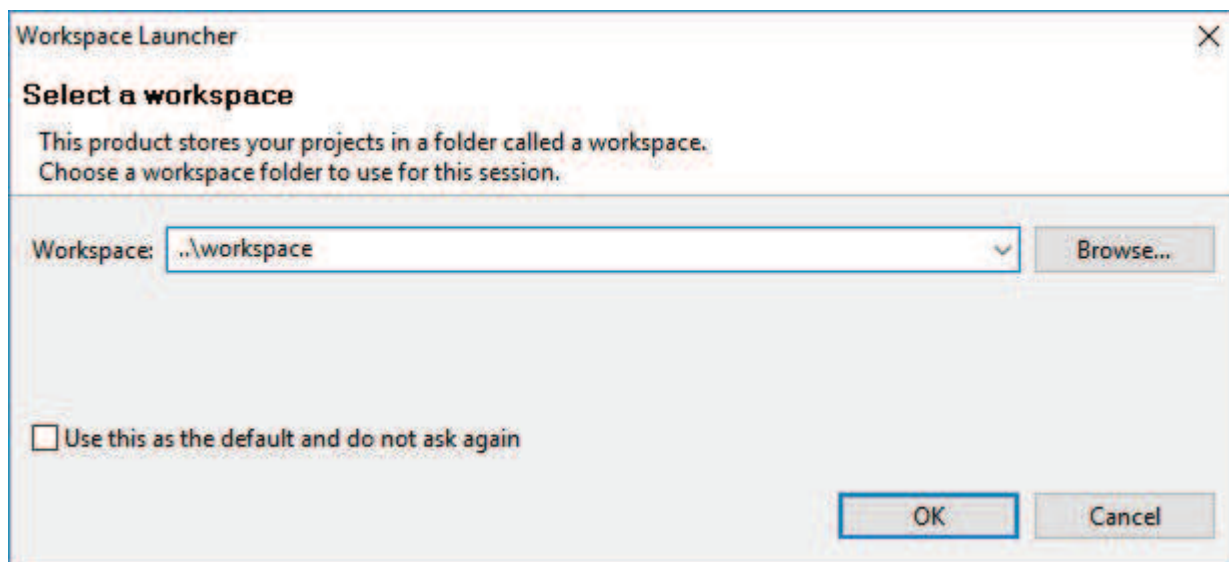


[Time4Sys](#) > [FirstStep](#)

Time4Sys First Steps

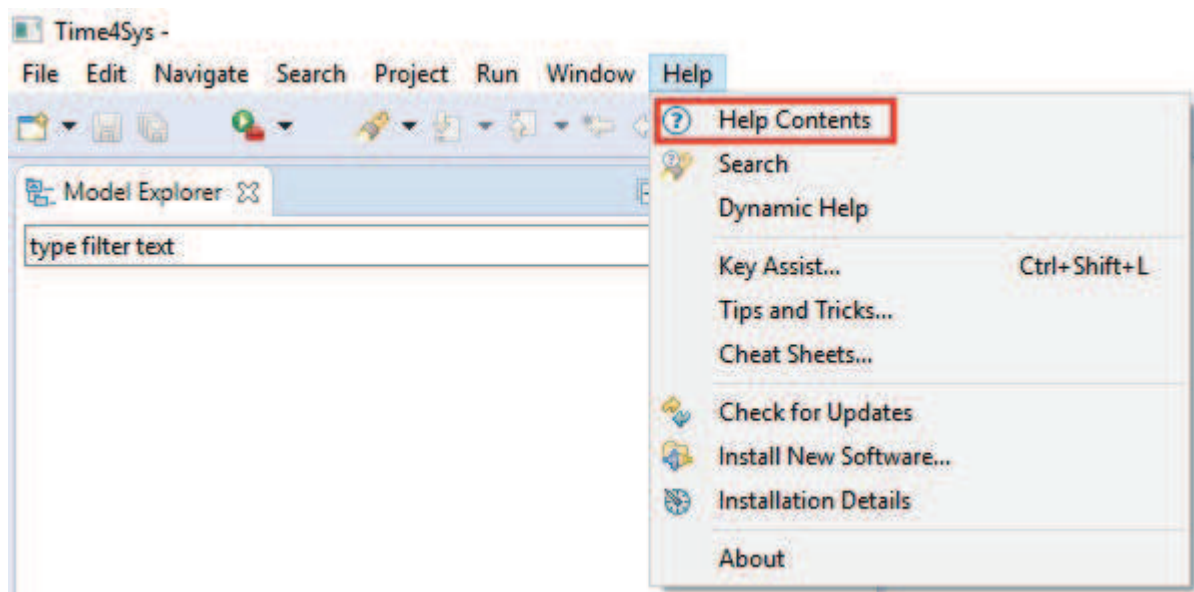
First Launch

Select the workspace which is the path of the folder that will contain all the project you will work on (by default).



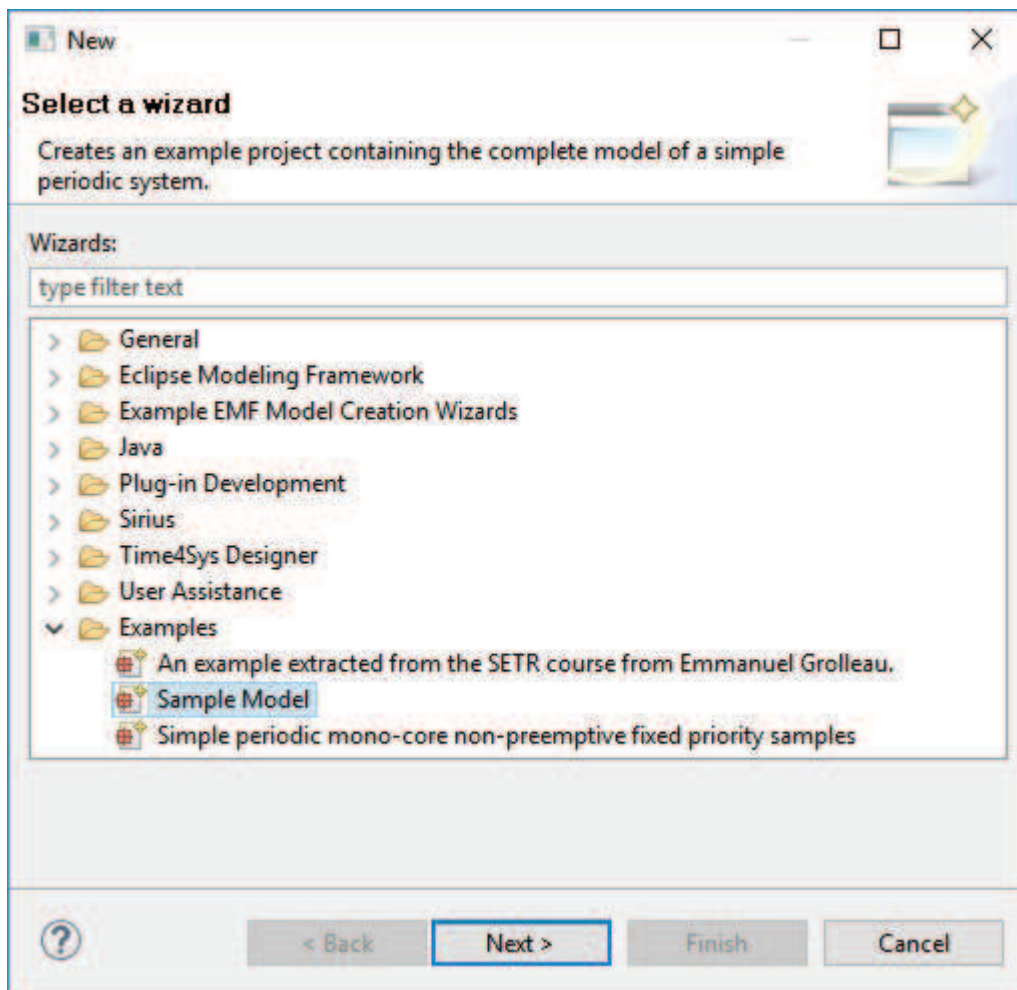
Access to Eclipse Help

The online documentation is also embedded in Time4Sys and can be accessed on the Help Contents.

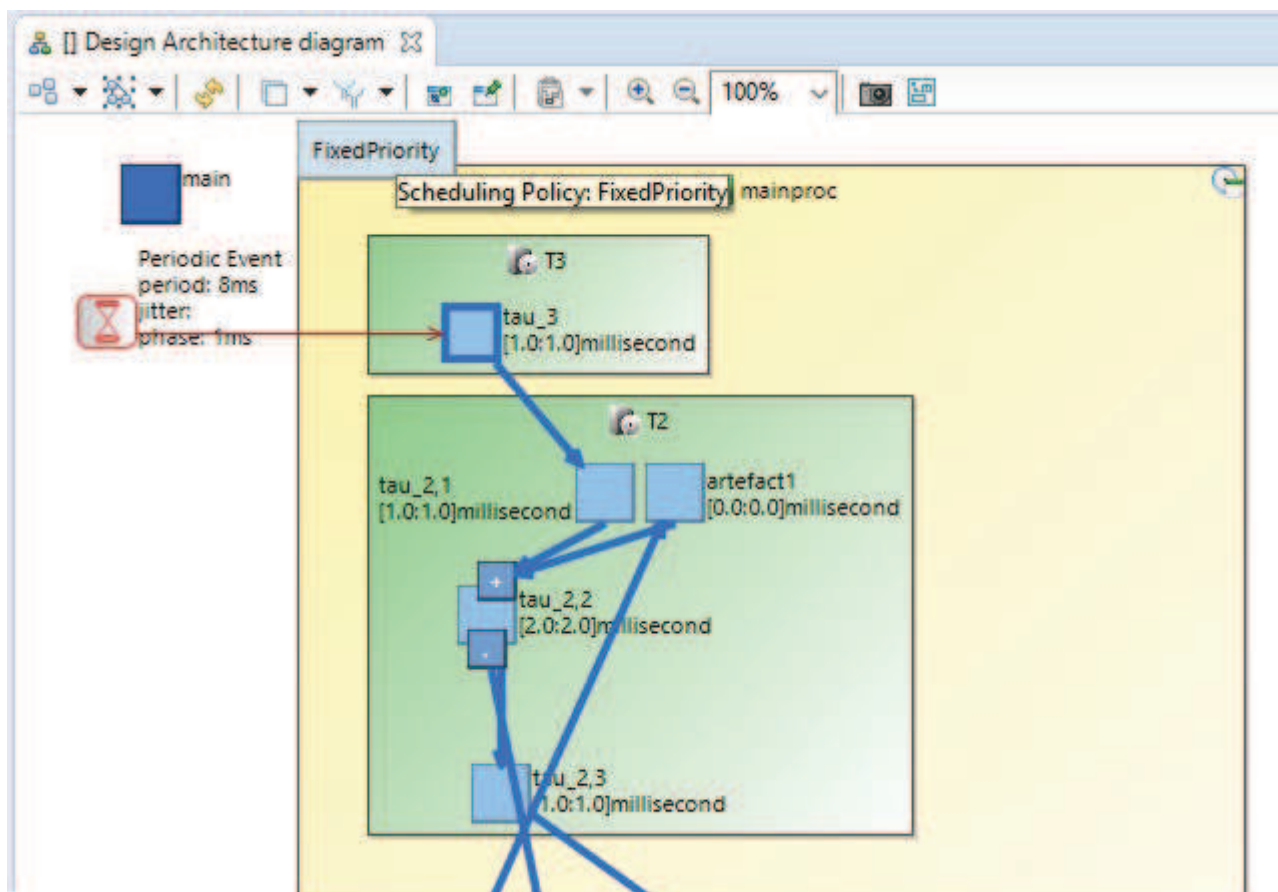


Sample Project Creation

On the Model Explorer View, right click on New -> Other And select in the example the sample project that you want to import:

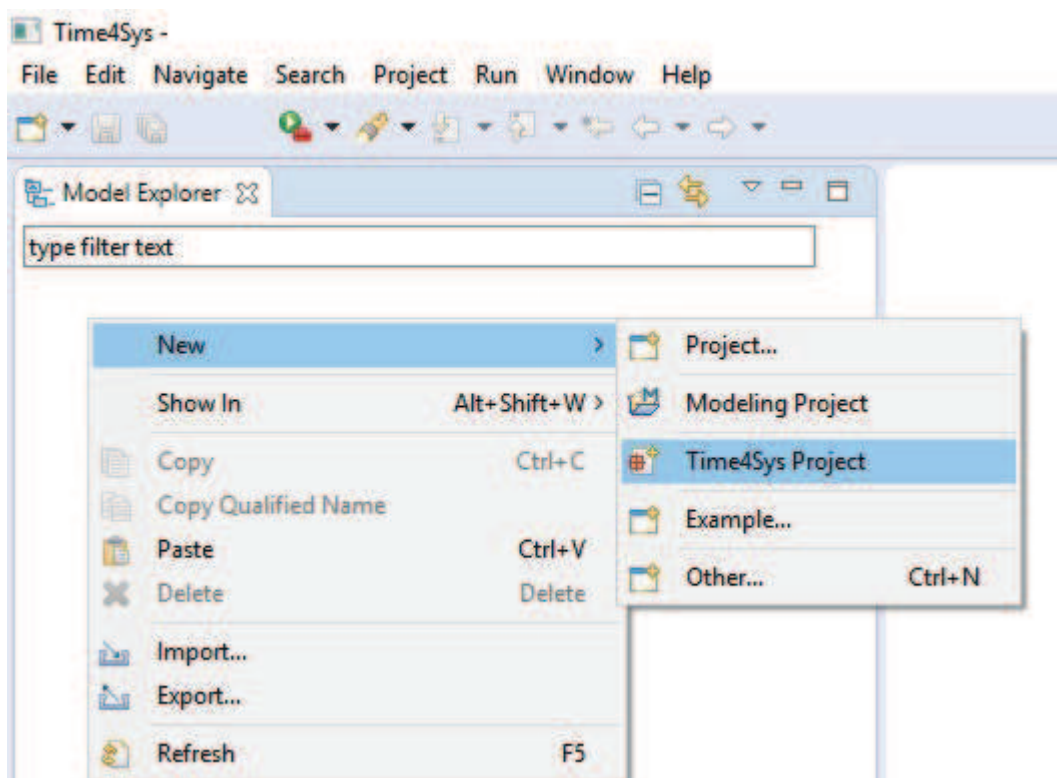


Open the project created on the Model Explorer view and double click on the representations.aird file. This shall open the design model diagram:



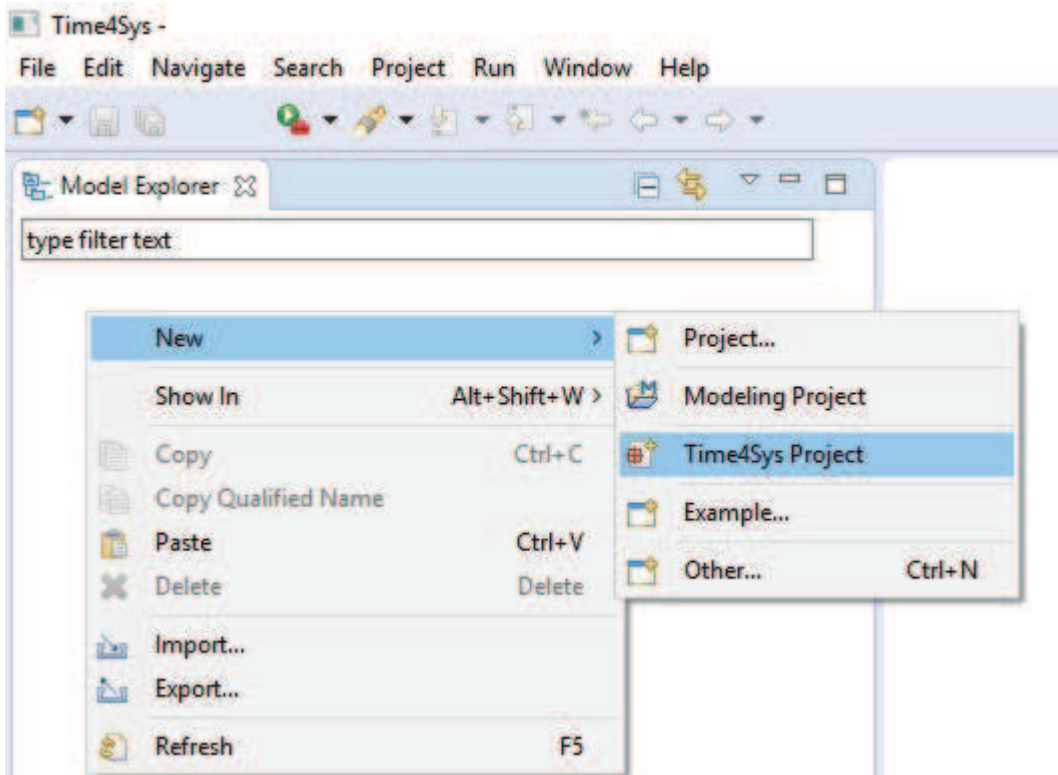
Project Creation

To create a new project, you have to be on the Model Explorer View, right click -> New -> Time4Sys Project.

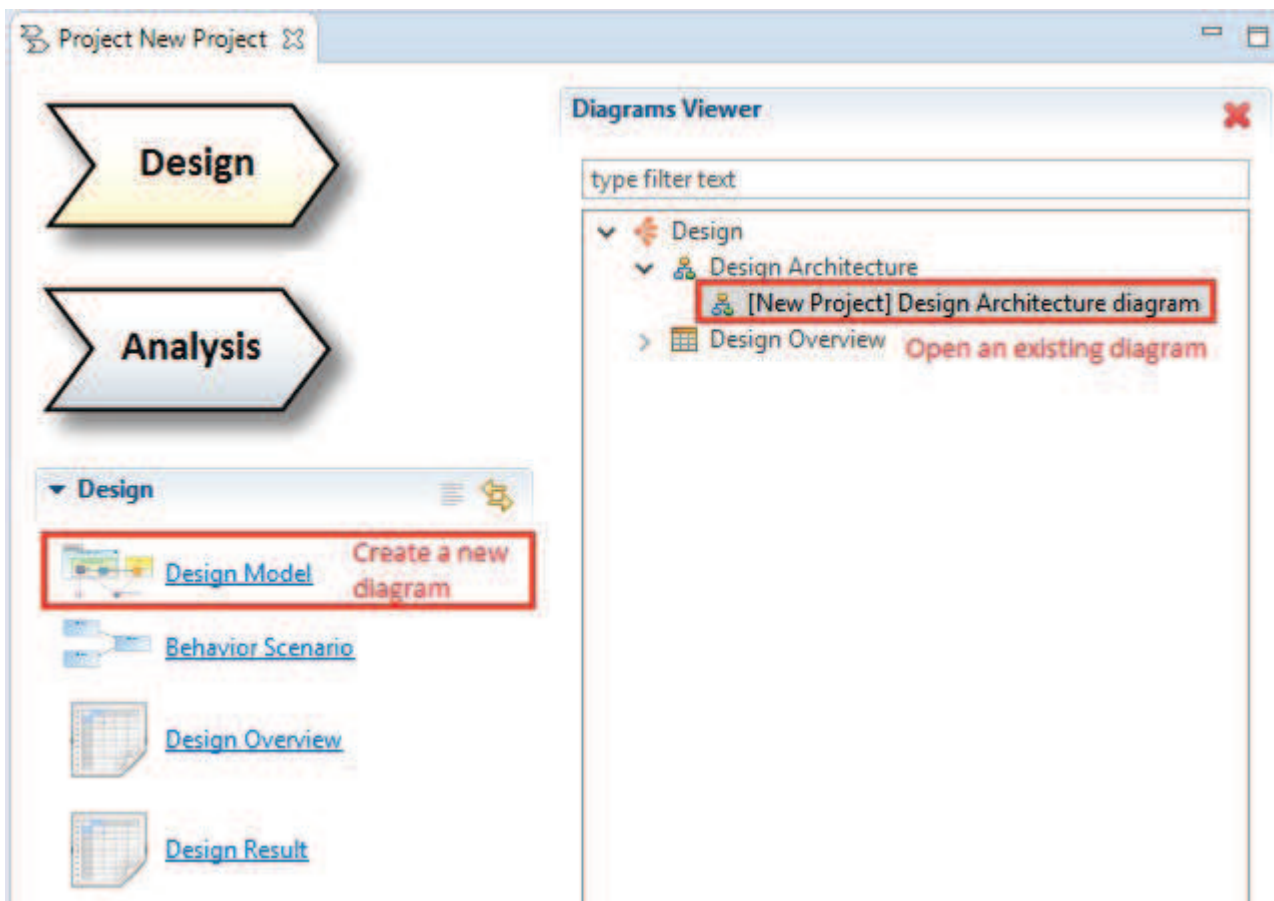


This will open a popup asking you to rename your project, once done, select finish.

After that, your project is created and you can chose to edit the design or the analysis models.



Open your first diagram or create a new one:

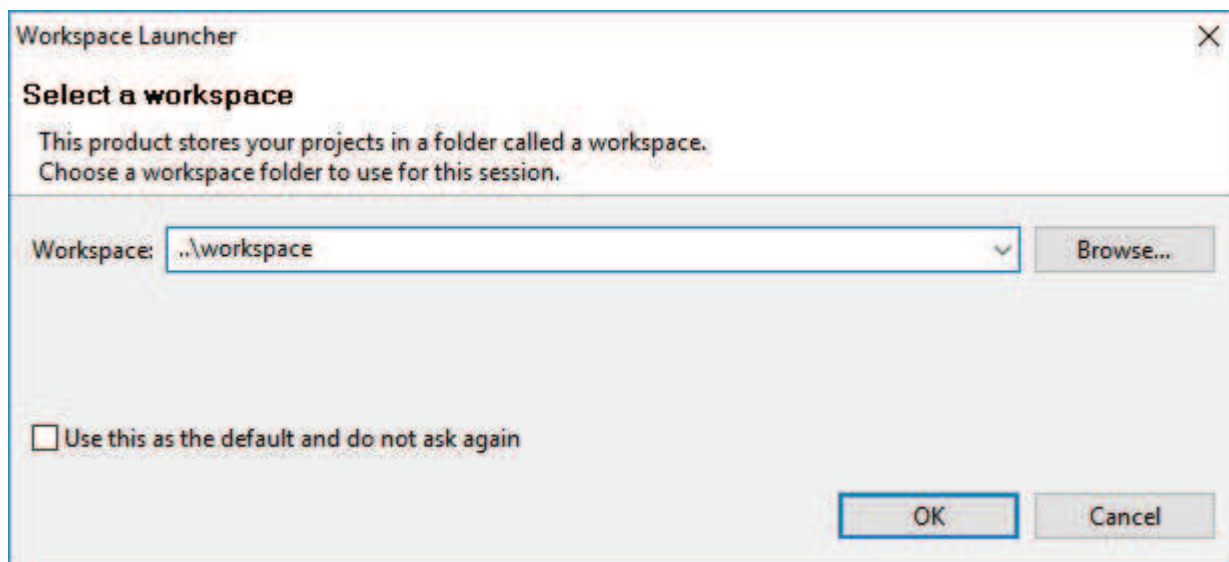


[Time4Sys](#) > [FirstStep](#)

Time4Sys First Steps

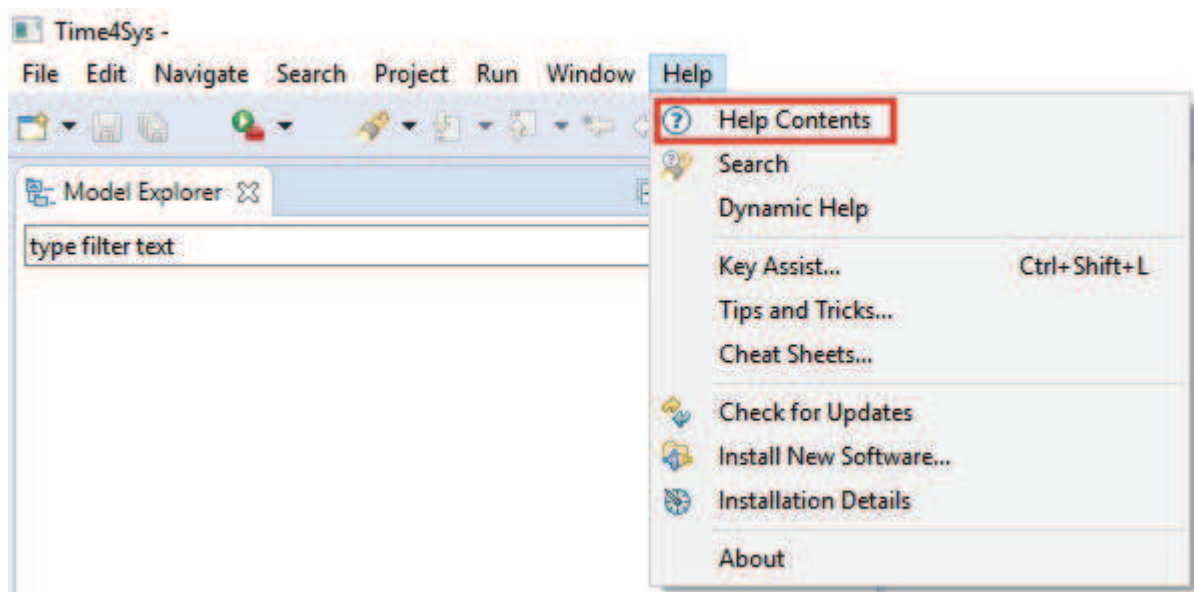
First Launch

Select the workspace which is the path of the folder that will contain all the project you will work on (by default).



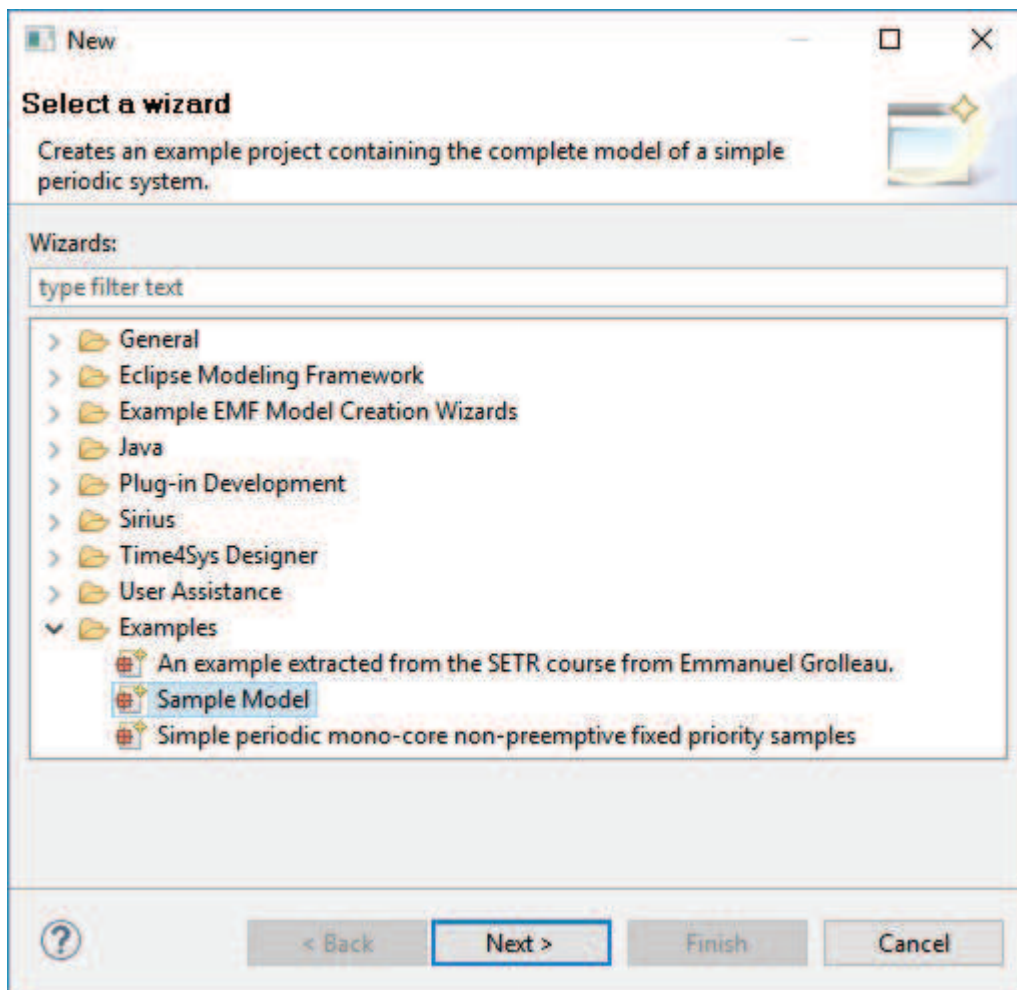
Access to Eclipse Help

The online documentation is also embedded in Time4Sys and can be accessed on the Help Contents.

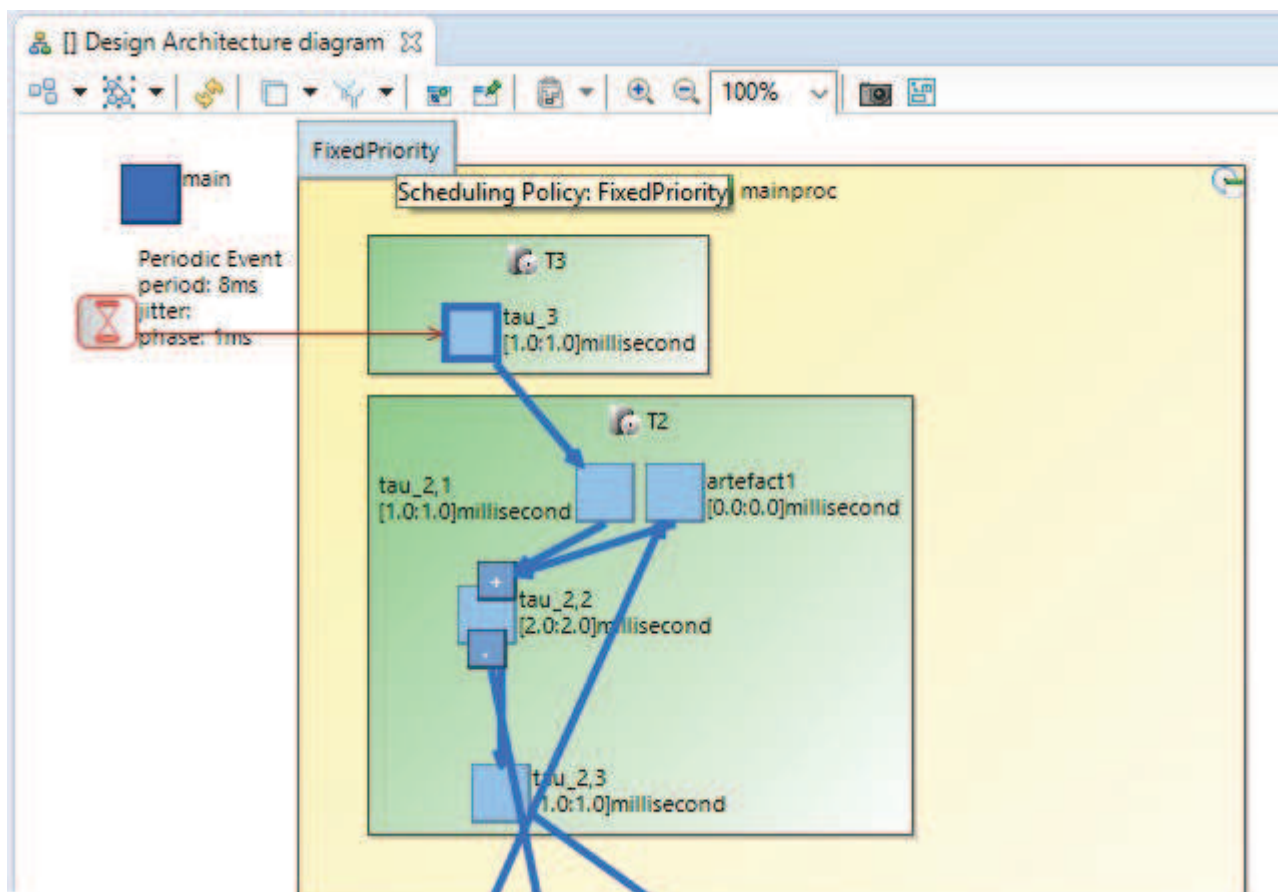


Sample Project Creation

On the Model Explorer View, right click on New -> Other And select in the example the sample project that you want to import:

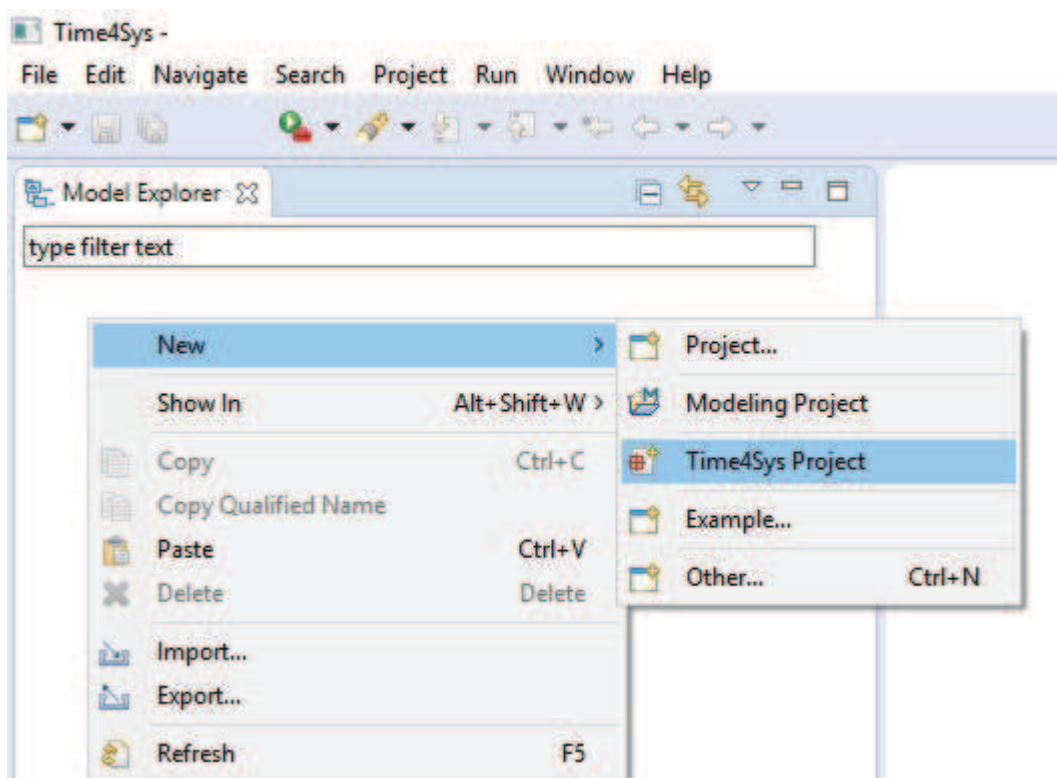


Open the project created on the Model Explorer view and double click on the representations.aird file. This shall open the design model diagram:



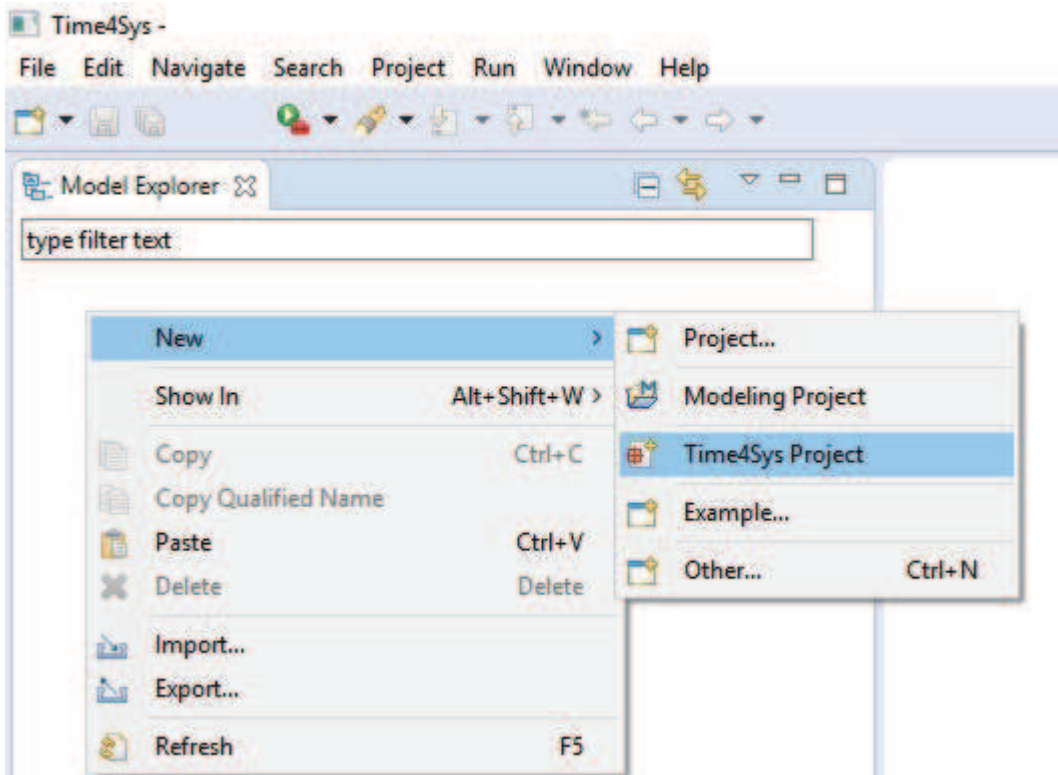
Project Creation

To create a new project, you have to be on the Model Explorer View, right click -> New -> Time4Sys Project.

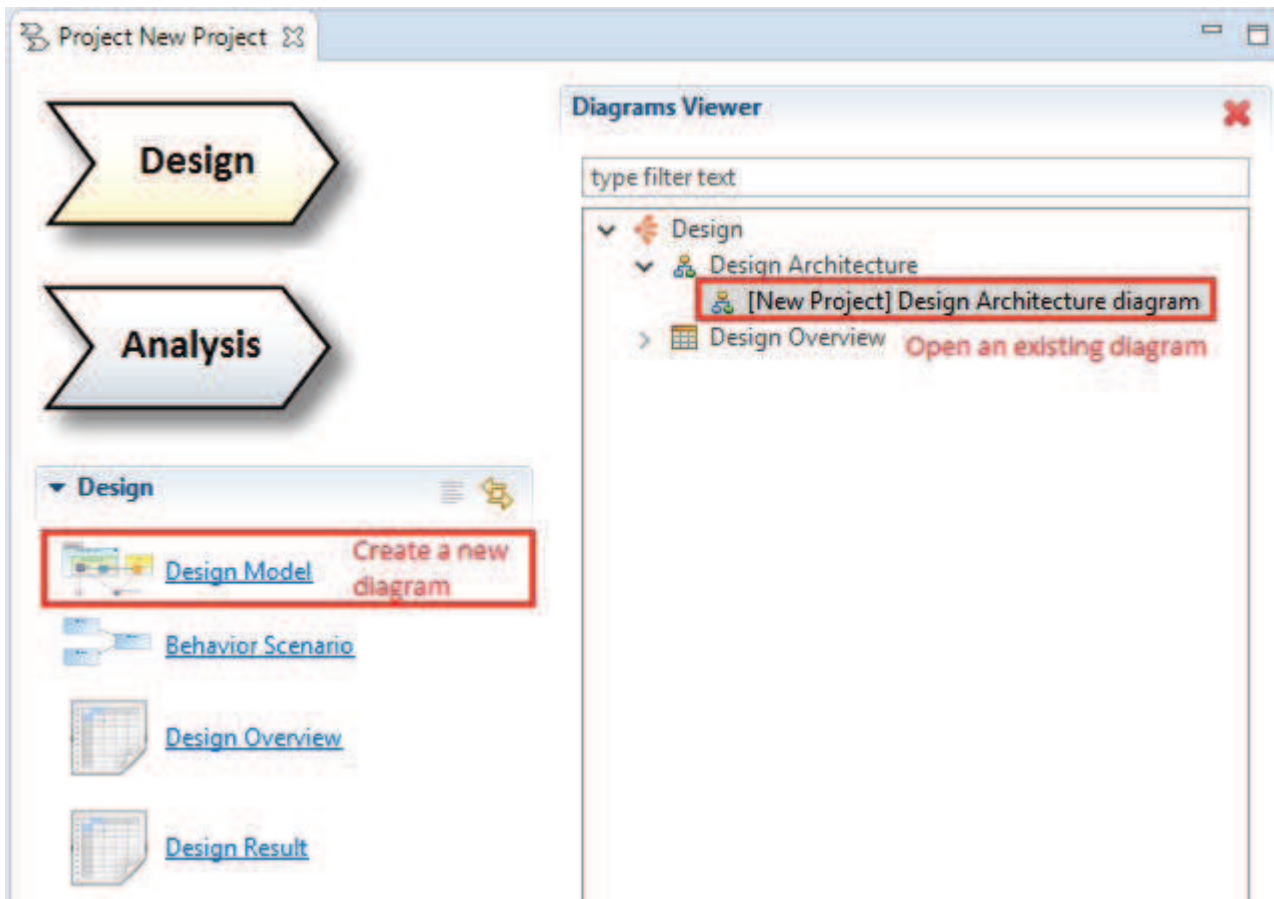


This will open a popup asking you to rename your project, once done, select finish.

After that, your project is created and you can chose to edit the design or the analysis models.



Open your first diagram or create a new one:

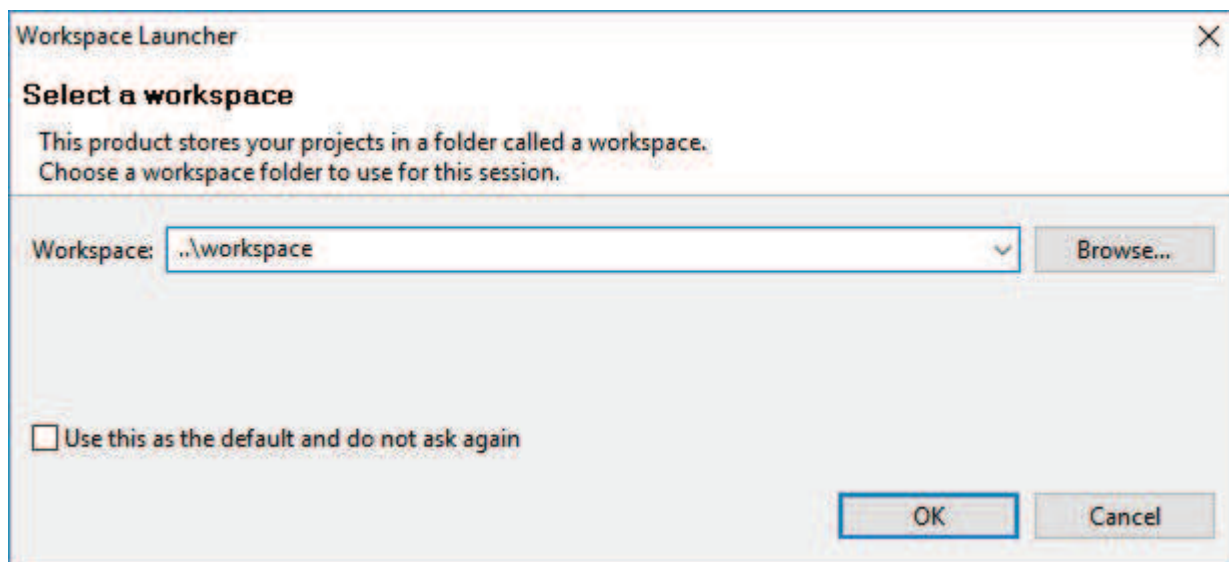


[Time4Sys](#) > [FirstStep](#)

Time4Sys First Steps

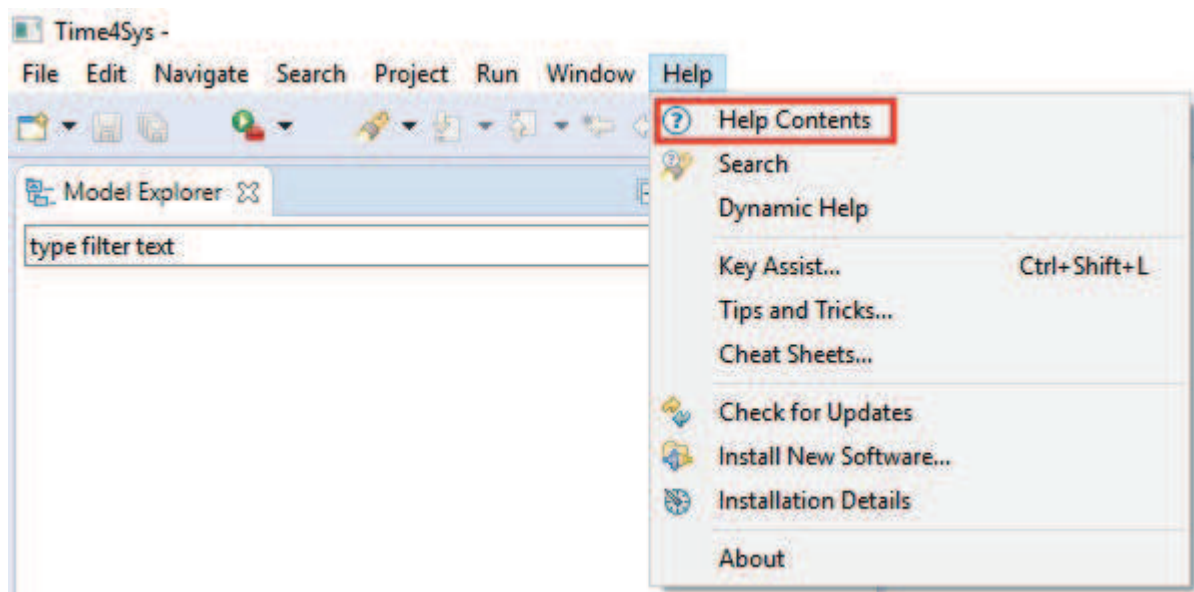
First Launch

Select the workspace which is the path of the folder that will contain all the project you will work on (by default).



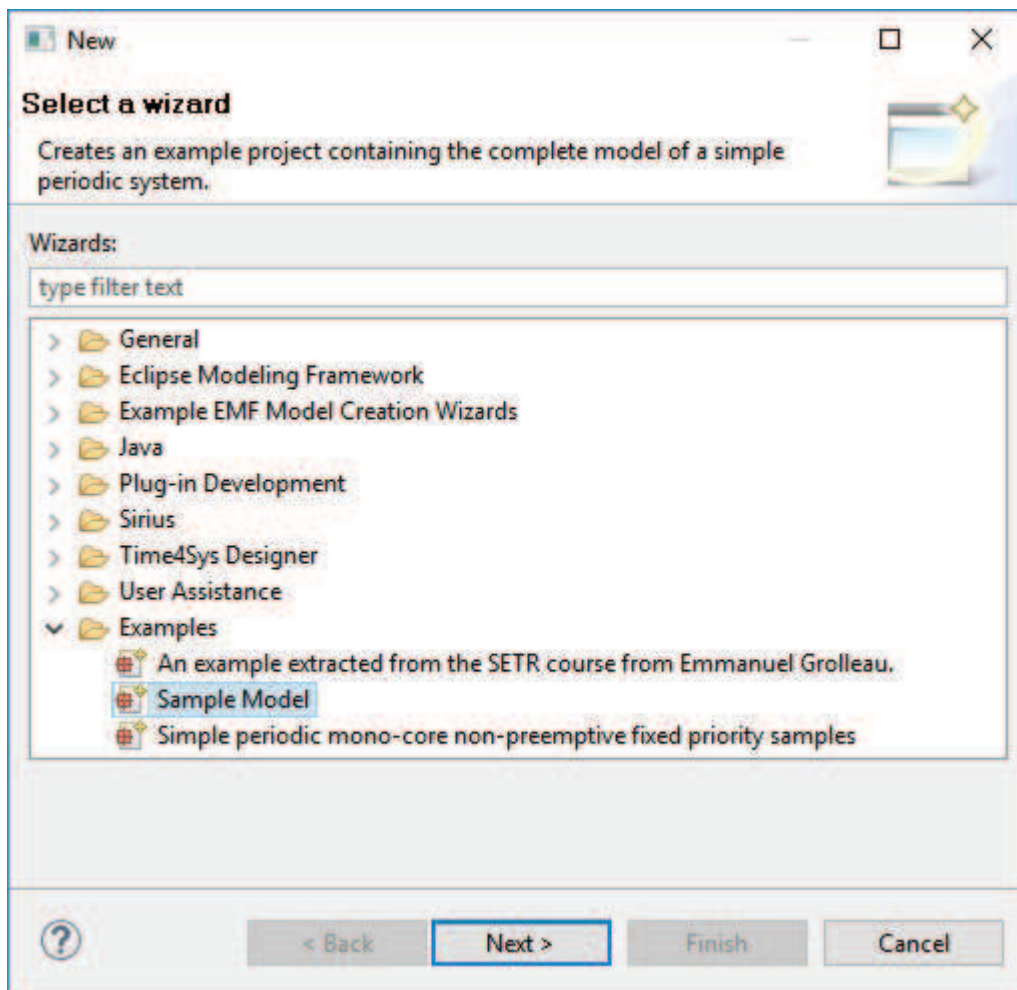
Access to Eclipse Help

The online documentation is also embedded in Time4Sys and can be accessed on the Help Contents.

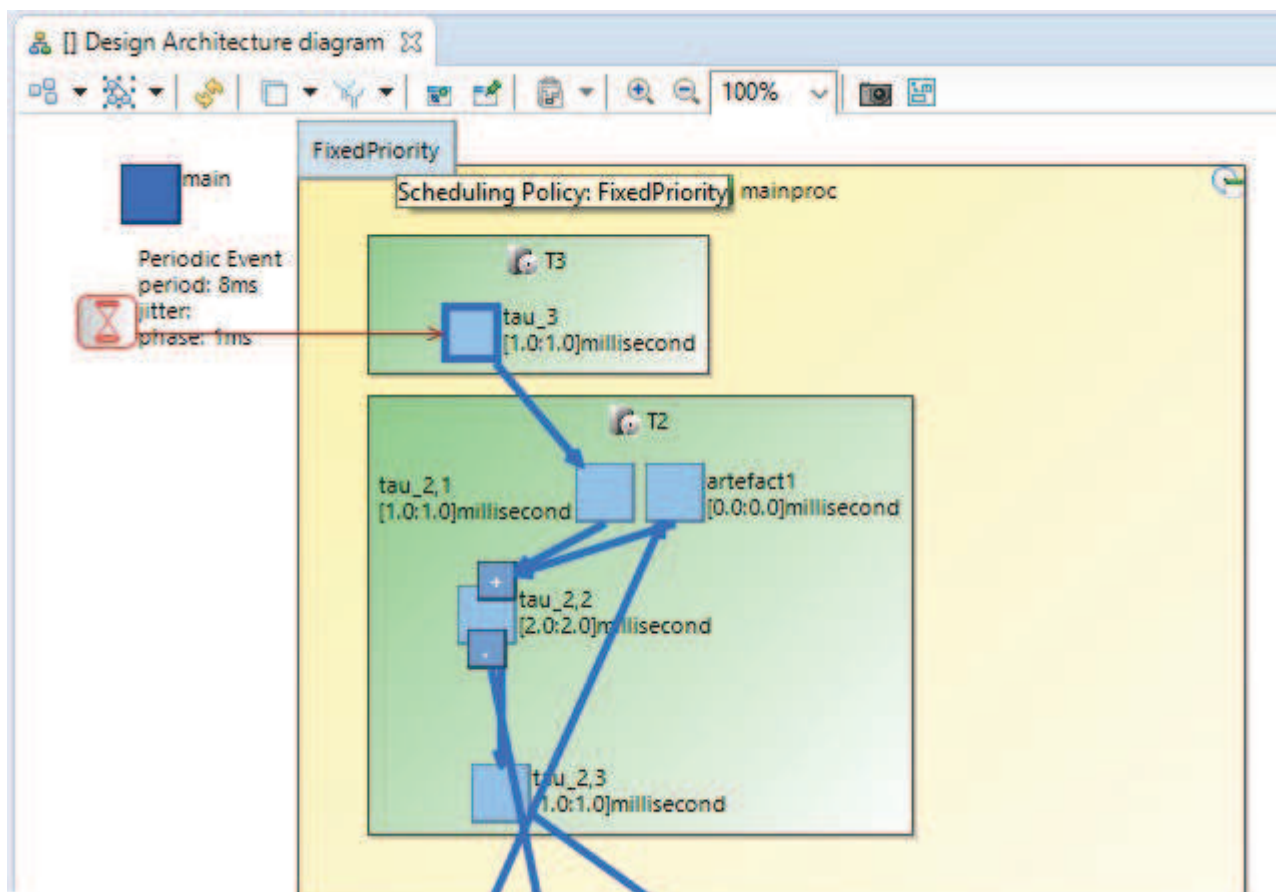


Sample Project Creation

On the Model Explorer View, right click on New -> Other And select in the example the sample project that you want to import:

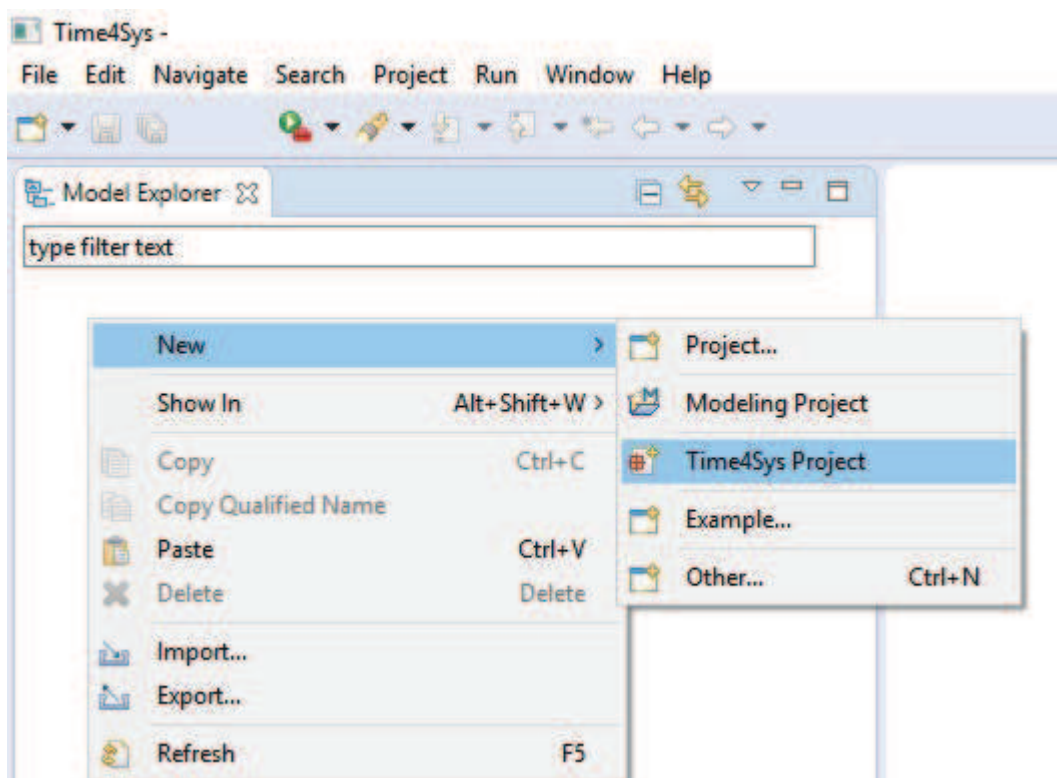


Open the project created on the Model Explorer view and double click on the representations.aird file. This shall open the design model diagram:



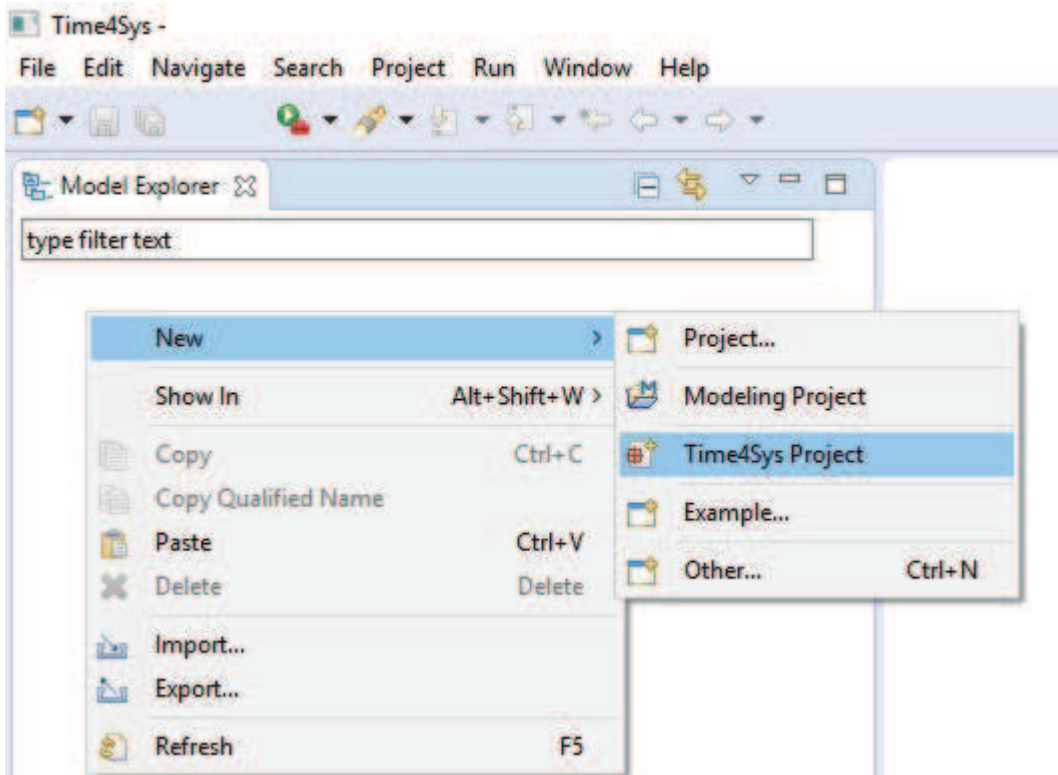
Project Creation

To create a new project, you have to be on the Model Explorer View, right click -> New -> Time4Sys Project.



This will open a popup asking you to rename your project, once done, select finish.

After that, your project is created and you can chose to edit the design or the analysis models.



Open your first diagram or create a new one:

