



Eclipse Test and Performance Tools Platform [TPTP] Project

Project Highlights

- Integrate with and support a broad spectrum of computing systems
- Provide open source tools of commercial quality
- TPTP is used to test TPTP and other Eclipse Platform projects

Benefits to end-users

- Allow users to assemble “best-of-breed” toolsets customized to the needs of the application and the organization
- Provide a high-quality “enterprise-ready” platform at reduced cost and risk
- Eliminate vendor lock-in
- Shorten the learning curve, reducing training costs

Benefits to contributors

- Broaden the scope of software solutions, extending market reach
- Build new products faster
- Perform more comprehensive testing in a shorter time, improving quality and reliability
- Reduce the cost of delivering tools
- Port tools to additional environments with minimal effort and expense

Introduction

The Eclipse Test and Performance Tools Platform (TPTP) Project provides an open platform supplying powerful frameworks and services that allow software developers to build unique test and performance tools, both open source and commercial, that can be easily integrated with the platform and with other tools.

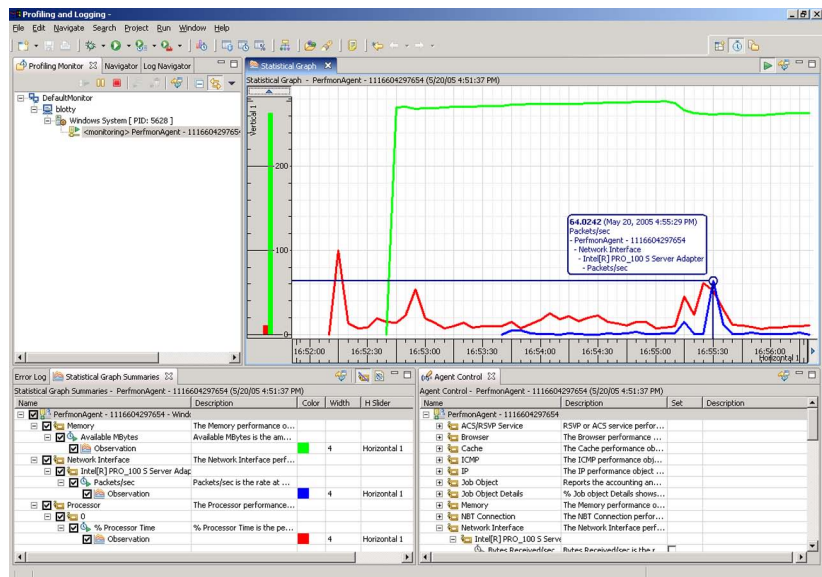
TPTP addresses the entire test and performance lifecycle, from early testing to production application monitoring, including test editing and execution, monitoring, tracing and profiling, and log analysis capabilities. The platform currently supports a broad spectrum of computing systems including embedded, standalone, enterprise, and high-performance and will continue to expand support to encompass the widest possible range of systems.

A Universal Test & Performance Platform

The Eclipse Test & Performance Project (TPTP) is the first Open Source project focused on providing a universal platform for the test and performance tools market.

TPTP extends the family of Eclipse technologies to provide an open development platform supplying frameworks and services for test and performance tools that are used throughout the lifecycle. These frameworks and services include testing, tracing and profiling, tuning, logging, monitoring, analysis, autonomic and administration.

The project also aims to deliver exemplary tools that not only verify the utility of the platform but also serve to illustrate how it can be used, as well as support the development and maintenance of the platform itself. The objective is to ensure that these tools are extensible and can easily be integrated by as wide a range of IT systems/technologies as possible.



Statistical Data Viewed Graphically in TPTP

Project Contributors



Computer Associates®



Scapa
Technologies



OC SYSTEMS



Fraunhofer
Institut für Offene
Kommunikationssysteme



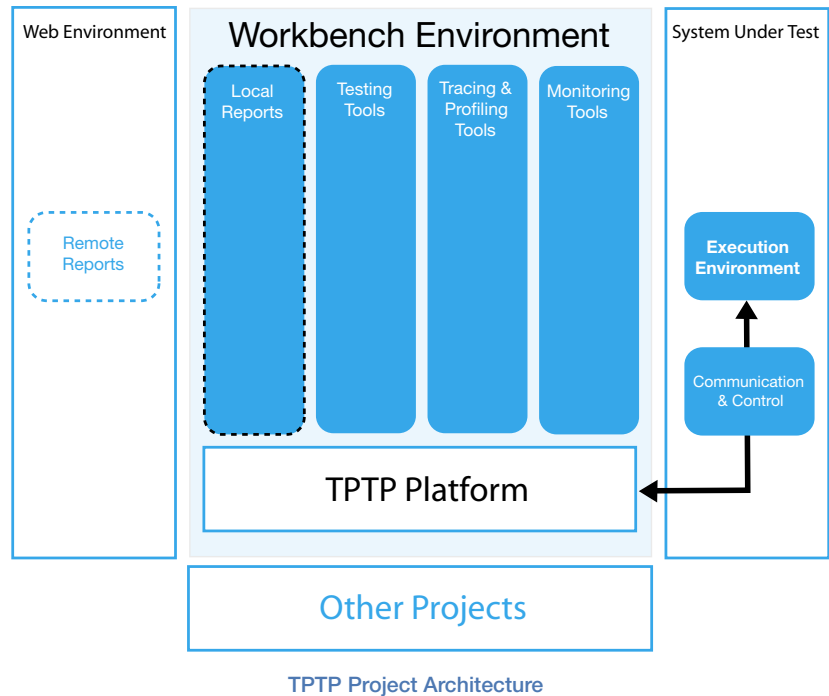
Get Involved

The Project Management Committee (PMC) encourages further active participation in the TPTP project. Contact us by using one of the TPTP mailing lists or the TPTP newsgroup, listed at

http://www.eclipse.org/tptp/home/project_info/general/mailnews.html

Website

<http://www.eclipse.org/tptp/>



TPTP Project Architecture

The work under this Eclipse Top Level Project is organized into four distinct Projects:

- **TPTP Platform Project**

The TPTP Platform Project provides the core framework upon which the development of the monitoring, testing and tracing and profiling tools relies. It provides common user interface, standard data models, data collection and communications control, as well as remote execution environments.

- **TPTP Monitoring Tools Project**

The TPTP Monitoring Tools Project addresses the monitoring and logging phases of the application lifecycle, collecting and analyzing system and application resources. The innovative log analysis tools can correlate disparate logs from multiple points across an environment. The project also includes exemplary tools for monitoring application servers and system performance, such as CPU and memory utilization.

- **TPTP Testing Tools Project**

The TPTP Testing Tools Project addresses the testing phase of the application lifecycle. It contains testing editors, deployment and execution of tests, execution environments and associated execution history analysis and reporting. The project also includes exemplary tools for JUnit based component testing tool, Web application performance testing tool, and a manual testing tool.

- **TPTP Tracing and Profiling Tools Project**

The TPTP Tracing and Profiling Tools Project addresses the tracing and profiling phases of the application lifecycle. It includes exemplary profiling tools for both single-system and distributed Java applications through a JVMPI monitoring agent that collects trace and profile data. A generic tool kit for probe insertion is also available.