



The Community for Open Collaboration and Innovation

Membership Prospectus



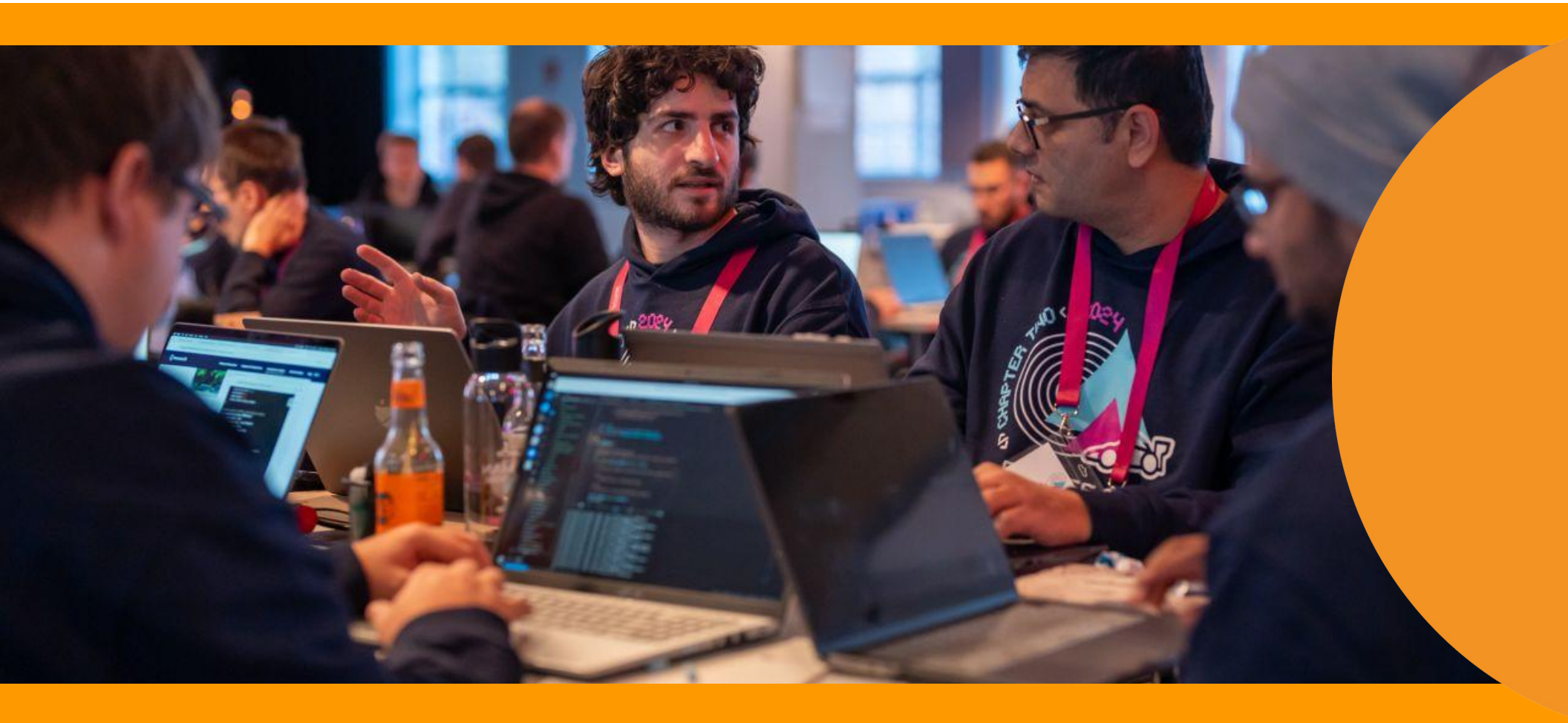
Who We Are

The Eclipse Foundation provides a business-friendly environment for global open source collaboration, supporting **420+ projects** across enterprise, cloud, automotive, AI, embedded systems, and more. Our collaborations — including [Adoptium](#), [Software Defined Vehicle](#), [Jakarta EE](#), [OpenHW](#) and [Eclipse IDE](#) — enable community-driven, code-first, and commercial-ready solutions.

As open source becomes central to global technology policy, the Eclipse Foundation plays a key role in advancing regulatory compliance, cybersecurity, supply chain security, and digital sovereignty.

Through initiatives like [Open Regulatory Compliance \(ORC\)](#), we help organisations navigate regulations such as the EU Cyber Resilience Act (CRA) while securing open source supply chains. Our work in [Dataspaces](#) promotes secure, interoperable data exchange, and our [publicly funded research](#) partnerships bridge policy, research, and industry to drive open source innovation. We're also advancing trusted, open AI through projects like [Theia AI](#) and [LMOS](#).

Headquartered in Brussels, Belgium, with a global footprint and over **300 members**, the Eclipse Foundation is a trusted leader in open source collaboration, driving innovation, security, and economic growth worldwide.



Unlocking Open Source Business Value

Participation in open source is a powerful driver of innovation and competitive advantage. The Eclipse Foundation delivers membership value through its vendor-neutral, collaborative governance model, enabling a consistent community of practice. This approach helps organisations maximise their open source investments, ensure long-term sustainability, and strengthen their strategic influence within the ecosystem.

Why Organisations Join the Eclipse Foundation:

Strengthen Brand & Industry Presence – Showcase thought leadership, innovation, and contributions in open source.

Engage with Developers – Participate in a thriving developer community and contribute to the projects that drive their business.

Collaborate in a Vendor-Neutral Environment – Work alongside industry peers to advance open source initiatives.

Protect Strategic Investments – Help shape and sustain critical technologies.

Optimise Development & Reduce Risk – Lower costs, mitigate technical risk, and accelerate time-to-market by contributing to shared core technologies.

Influence Industry Standards – Play a role in defining open specifications and advancing certification efforts with standards bodies.

Ensure Legal & IP Compliance – Benefit from a proven legal framework that supports safe IP sharing and compliance with antitrust laws.

Innovate and Grow – Harness open source to develop, scale, and commercialise impactful products and solutions.

The Eclipse Foundation provides the structure, expertise, and global reach to help organisations innovate, collaborate, and lead in open source — turning participation into a long-term strategic advantage.



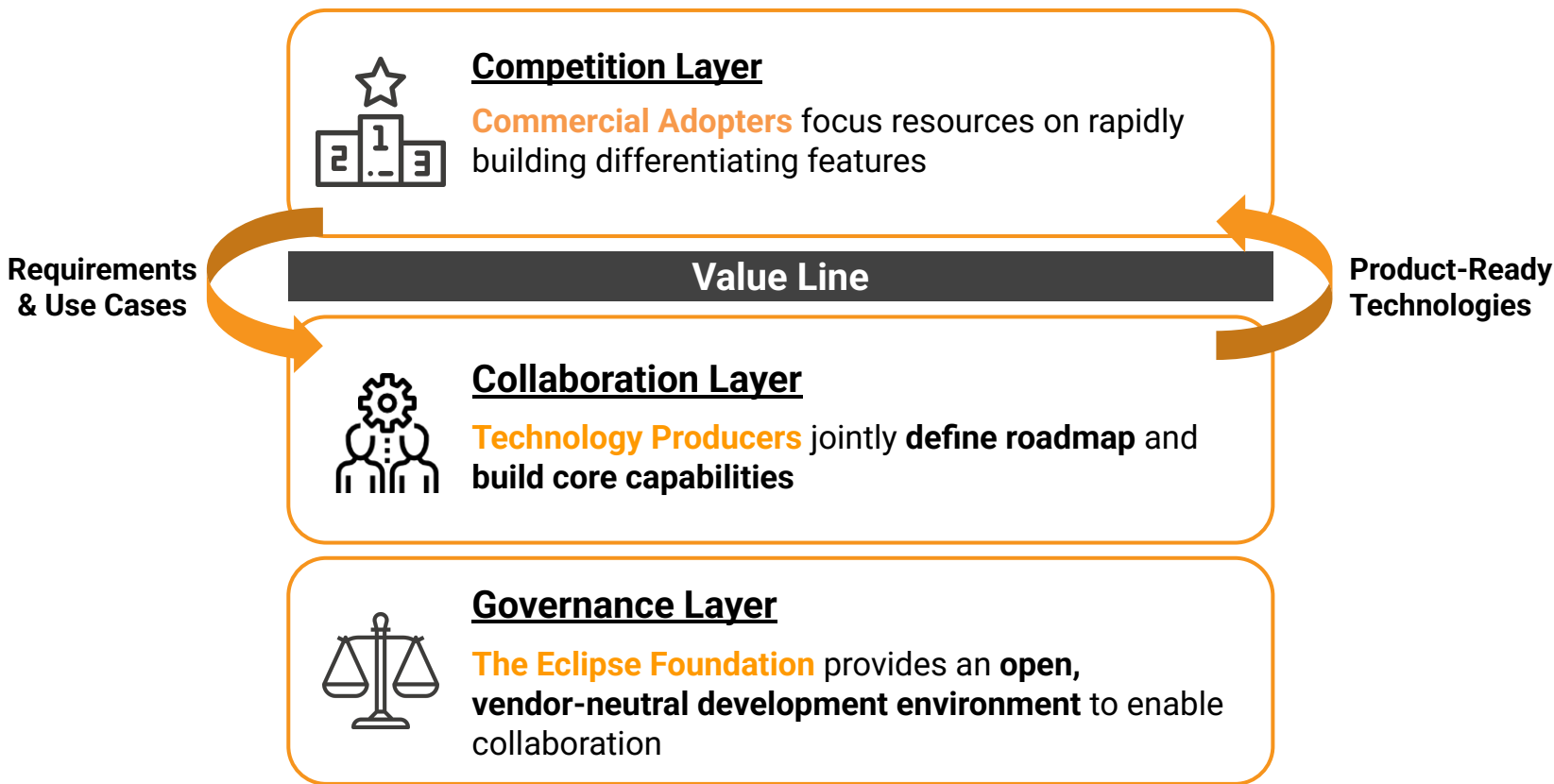
Enabling Business-Friendly Open Source

The Eclipse Foundation provides structured, transparent processes that create a **community of practice** across all Eclipse initiatives, guided by our staff. Rooted in strong governance, these processes ensure that industry stakeholders, researchers, and individuals can collaborate in the open, while maintaining a level playing field for competition on products and services.

Development Process – Ensures projects are managed transparently by committers in an open, vendor-neutral environment.

IP Process – Enforces license compliance and aligns with the OpenChain standard for trust along the supply chain.

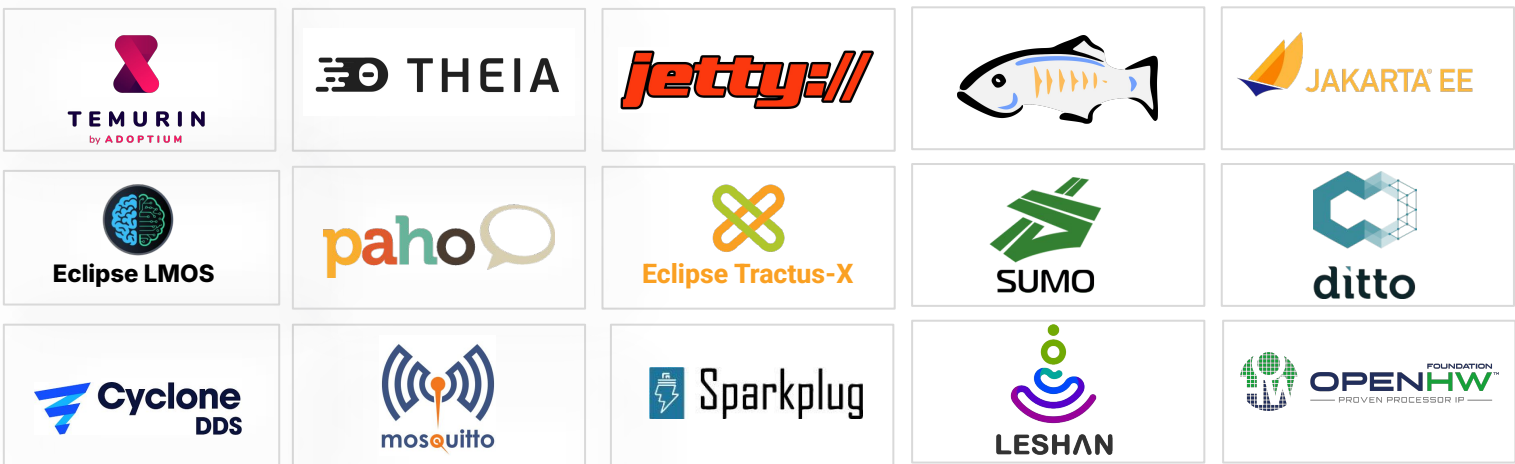
Specification Process – Supports the creation of open specifications, with the ability to be adopted as ISO/IEC JTC1 PAS international standards.



Driving Innovation Across Industries

Our projects and collaborations drive innovation across diverse industries, including software-defined vehicles and automotive, enterprise Java, embedded systems, developer tools, cloud and edge applications, open hardware, and much more.

Notable Projects



The Impact of Your Membership

Your membership directly supports the Eclipse Foundation's thriving global ecosystem, enabling our professional team to provide essential services that drive open source success. Here's how your support makes a difference:

- **Governance & Sustainability** – We maintain vendor-neutral, open, and transparent governance frameworks that ensure the long-term success of projects and industry collaborations.
- **Project Stewardship** – We provide guidance and support to help projects succeed, including implementing the [Eclipse Foundation Development Process](#) for best-in-class, commercial-friendly open source development.
- **Community Growth** – We cultivate global communities around Eclipse projects and collaborative initiatives, with the aim of growing a robust and diverse contributor base.
- **Ecosystem Development** – We recruit new members and collaborate with related industry organisations and initiatives to strengthen the open source ecosystem.
- **Branding & Marketing** – We develop strategies and campaigns to establish strong identities for projects and industry collaborations.
- **Events & Networking** – We host virtual and in-person events that connect developers, businesses, and stakeholders to share insights and collaborate on cutting-edge technologies. We also sponsor and participate in key industry events to showcase Eclipse Foundation projects and initiatives, helping to grow awareness, foster partnerships, and drive innovation across the open source ecosystem.
- **Infrastructure & IT Support** – We provide vendor-neutral management and support of reliable and scalable IT infrastructure, including source code repositories, CI/CD pipelines, download sites, communication tools, and websites.
- **Security & Compliance** – We uphold the security and integrity of projects, systems, and data by adhering to industry-leading practices and standards in software production, risk management, and incident response.
- **Specification Development** – We streamline the creation of industry consensus specifications, leveraging the [Eclipse Foundation Specification Process](#). As an approved JTC1 PAS submitter, select specifications can be proposed as international standards at ISO/IEC.
- **Policy & Regulatory Advocacy** – We monitor emerging regulations that impact open source, keeping members informed while championing policies that protect and support open innovation.

Your membership fuels innovation, collaboration, and growth within the Eclipse Foundation's ecosystem, ensuring open source remains a powerful force for industry advancement.

Flexible Membership Options

The Eclipse Foundation offers three membership levels to accommodate organisations of all sizes and interests:

- **Strategic Membership** – For organisations with a vested interest in shaping the Foundation’s direction and initiatives.
- **Contributing Membership** – Designed for for-profit corporations looking to actively participate in and support open source projects.
- **Associate Membership** – Available to non-profits, research institutions, and educational organisations that wish to engage with the Eclipse ecosystem.

Learn more about our [membership levels](#) and find the right fit for your organisation.

Strategic	Contributing	Associate
<ul style="list-style-type: none">● Seat on EF Board of Directors● Seat on EF Technical Advisory Council● Direct influence on key governance topics, including amendments to Bylaws, Membership Agreement, IP and Antitrust Policies● Access to Strategic Member-only programs● Annual strategic alignment meeting with EF leadership (virtual or in-person at EF event)● Priority invitations to member-only executive roundtables and strategy sessions● Lead the establishment of EF working groups and interest groups● Access to member-only meetings and information● Access to additional build infrastructure resources for key projects● Intellectual property analysis and reporting	<ul style="list-style-type: none">● Represented on the Board of Directors (via elected representative)● Eligible to stand for Board elections● Via Board representation, influence on key governance topics, including amendments to Bylaws, Membership Agreement, IP and Antitrust Policies, etc.● Right to vote at General Assembly meetings● Opportunity to participate in and lead over 20 EF industry collaborations (working groups and interest groups)● Access to member-only meetings and information● Intellectual property analysis and reporting	<ul style="list-style-type: none">● Attend General Assembly meetings (non-voting)● Ability to join select EF working groups as a Guest member● Access to member-only meetings and information

Marketing and Brand Benefits Summary

Eclipse Foundation membership unlocks powerful opportunities to elevate your brand, promote your technologies, and connect with a global open source ecosystem. Showcase your organisation’s leadership in open source innovation and emerging technology trends while expanding your market reach. Highlight your involvement in Eclipse projects and working groups, and engage with a vibrant community of over 15,000 contributors and millions of users through strategic marketing programs, content initiatives, and developer-focused campaigns and events.

Strategic	Contributing	Associate
<ul style="list-style-type: none">● Premier logo placement on eclipse.org and in high-visibility materials● Joint press release or supporting quote upon joining● Mention in the EF Annual Report, strategic announcements, and thought leadership campaigns● Use of the Eclipse Foundation Strategic Member badge● Opportunities for spokesperson participation in press releases, media interviews, and analyst briefings● Annual strategic engagement with EF executives (briefing, roundtable, or hosted event)● Priority access to keynote speaking slots and major event stages (e.g., OCX keynote)● First access to EF-led campaigns, media opportunities, and event branding packages● Highest discounts on EF-hosted event sponsorships, exhibits, and passes● Includes all Contributing Member benefits	<ul style="list-style-type: none">● Enhanced logo placement on eclipse.org and EF marketing materials● Use of the Eclipse Foundation Contributing Member badge● Social media welcome post with branded imagery● Featured participation in EF member success stories, case studies, and blog series● Priority access to speaking and presentation opportunities at EF-hosted webinars, livestreams, and panels● Ability to showcase your project-related events on eclipse.org/events● Significant discounts on EF-hosted events and sponsorship opportunities● Includes all Associate Member benefits	<ul style="list-style-type: none">● Logo placement on eclipse.org (Associate section)● Use of the Eclipse Foundation Associate Member badge● Social media welcome post upon joining● Opportunity to submit news or project updates for promotion via blogs, newsletters, and EF social media● Access to EF advertising programs (e.g., newsletter placements, banner ads)● Ability to propose and host Open Community Meetups and Virtual Eclipse Community Meetups

Membership Fees

Membership fees are determined by membership level and annual corporate revenue. The chart below provides an overview, but for complete details, please refer to the [Eclipse Membership Agreement](#).

	Annual Eclipse Foundation Membership Fees		
Annual Corporate Revenues	Strategic	Contributing	Associate
> €1 billion	€300 000	€25 000	€25 000
€100 million - €1 billion	€180 000	€17 500	€17 500
€50 million - €100 million	€125 000	€12 500	€12 500
€10 million - €50 million	€60 000	€9 000	€9 000
< €10 million	€30 000	€6 000	€6 000
< €1 million & fewer than < 10 employees	€30 000	€1 500	€1 500
Govt, Govt agencies, Research Organisations, NGOs, etc.	€30 000	€6 000	€0
Academic, Publishing Organisations, User Groups, etc.	€30 000	€1 000	€0

The membership fees listed above are separate from any additional fees required to participate in Eclipse Foundation industry collaborations, each of which has its own fee structure.



How to Become a Member

Joining the Eclipse Foundation is a straightforward process:

- **Select Your Membership Level** – Choose from Strategic, Contributing, or Associate Membership based on your organisation's goals and level of engagement.
- **Complete the [Membership Application Form](#)** – Provide the necessary information to complete your application and electronically sign the following documents:
 - [Membership Application](#)
 - [Membership Agreement](#)
 - [Member Committer and Contributor Agreement](#) (optional, but recommended)

Alternatively, you can download, complete, and sign these documents, then [email them to us](#) for processing.

Note: Participation in an Eclipse Foundation Industry Collaboration requires signing that collaboration's Participation Agreement. For more details, view our current [Industry Collaborations](#).





Join Us!

To learn more about the benefits of Eclipse Foundation membership and how we support community-driven industry collaborations, please reach out to the Membership Coordination Team:

membership@eclipse.org

