

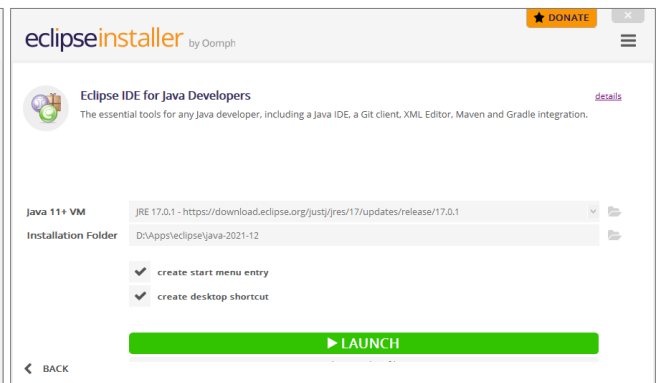
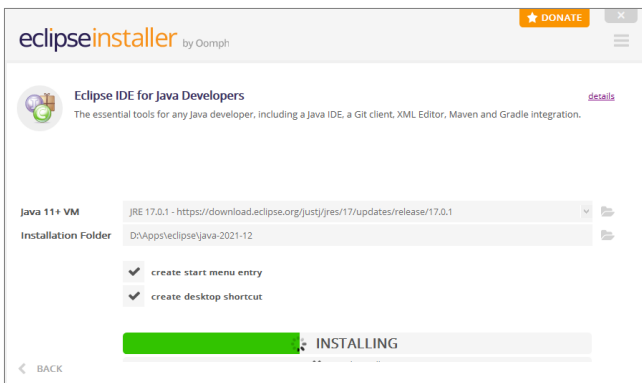
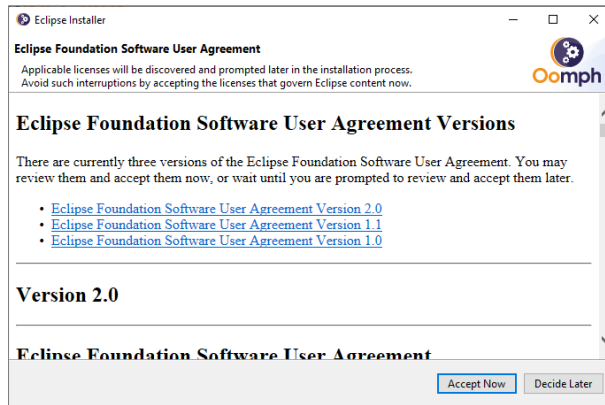
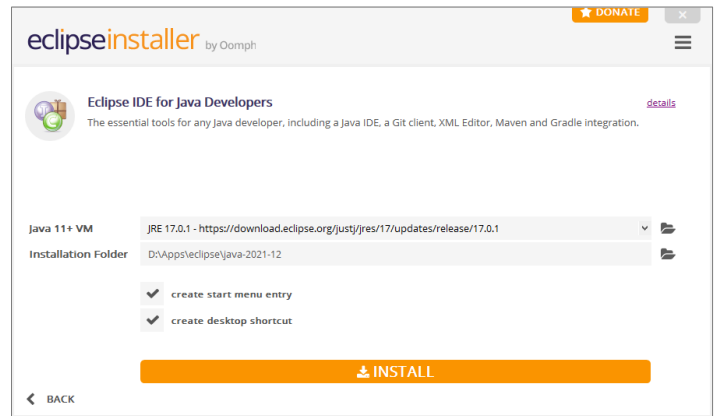
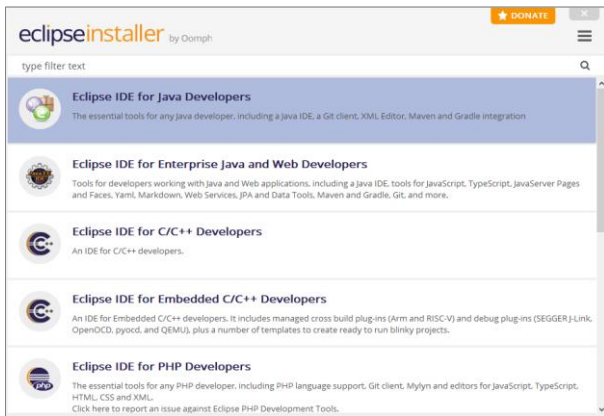
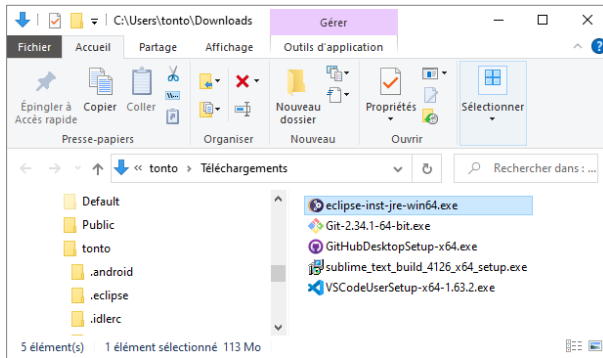
# ECLIPSE et BIRT

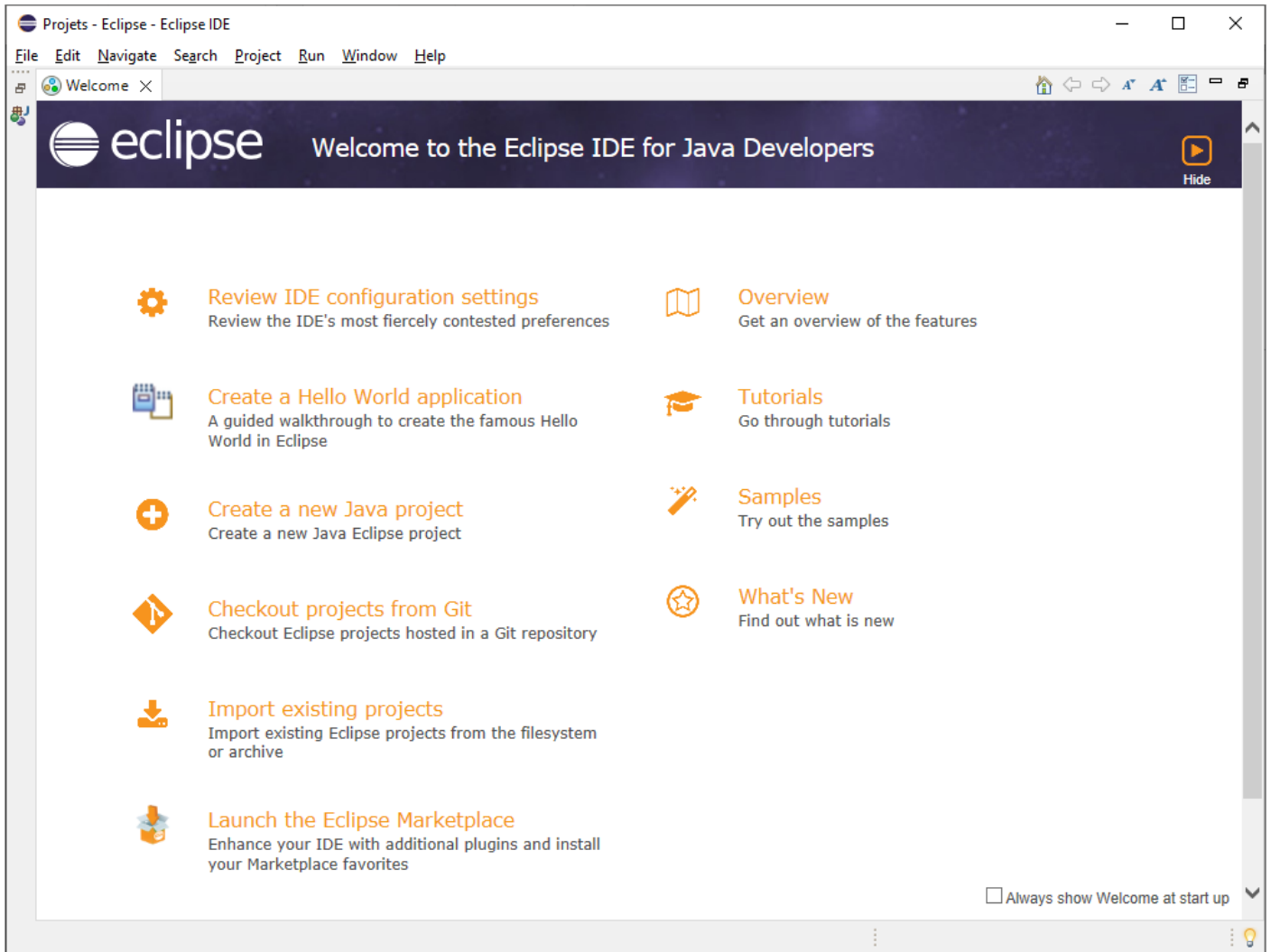
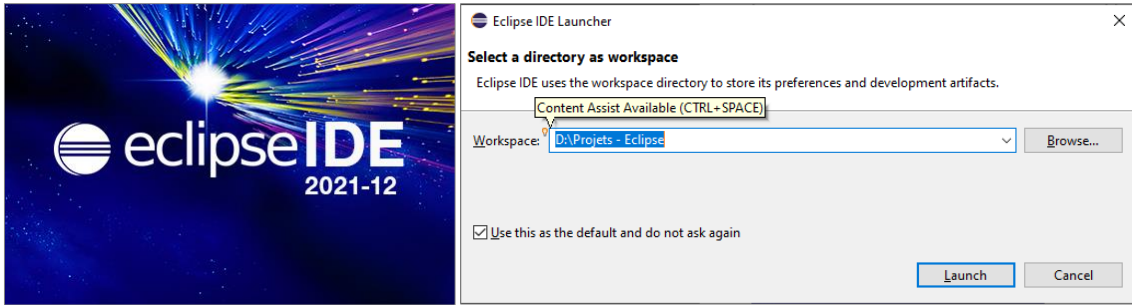
## Table des matières

1	Installer ECLIPSE .....	2
2	Installer BIRT Report Tools pour Eclipse .....	4
2.1	Introduction.....	5
2.2	Birt URL Update Site .....	6
2.3	Installer les outils de rapport BIRT dans Eclipse .....	7
2.4	Vérifier après l'achèvement de l'installation .....	12
2.5	Le didacticiel de la programmation de rapport BIRT pour des débutants .....	15

# 1 INSTALLER ECLIPSE

URL de download : <https://www.eclipse.org/downloads/packages/release/2021-12/r/eclipse-ide-java-developers>





## 2 INSTALLER BIRT REPORT TOOLS POUR ECLIPSE

<https://devstory.net/10215/installer-birt-report-tools-pour-eclipse>

## 2.1 Introduction

Ce document va vous montrer comment installer l'outil BIRT dans Eclipse, un outil qui vous aide par programme de visualiser des rapports BIRT.

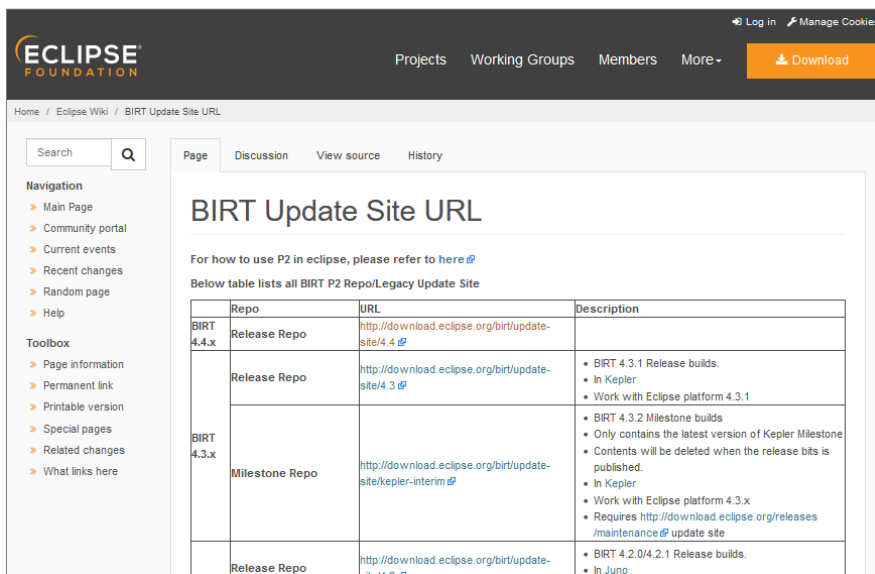
**BIRT:** Business Intelligence and Reporting Tools

Ce document est basé sur:

- Eclipse 4.4 (LUNA) (Or newer)
- BIRT 4.4

## 2.2 Birt URL Update Site

- [http://wiki.eclipse.org/BIRT\\_Update\\_Site\\_URL](http://wiki.eclipse.org/BIRT_Update_Site_URL)



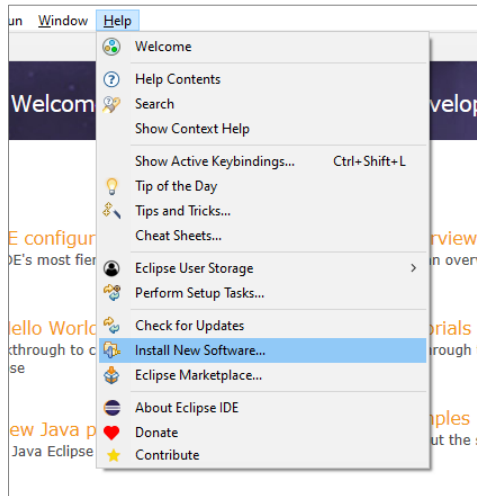
The screenshot shows the Eclipse Wiki page for 'BIRT Update Site URL'. The page title is 'BIRT Update Site URL'. Below the title, there is a text block: 'For how to use P2 in eclipse, please refer to [here](#)'. Below that, it says 'Below table lists all BIRT P2 Repo/Legacy Update Site'. A table follows with three columns: 'Repo', 'URL', and 'Description'. The table contains three rows of data.

Repo	URL	Description
BIRT 4.4.x Release Repo	<a href="http://download.eclipse.org/birt/update-site/4.4">http://download.eclipse.org/birt/update-site/4.4</a>	
BIRT 4.3.x Release Repo	<a href="http://download.eclipse.org/birt/update-site/4.3">http://download.eclipse.org/birt/update-site/4.3</a>	<ul style="list-style-type: none"><li>• BIRT 4.3.1 Release builds.</li><li>• In Kepler</li><li>• Work with Eclipse platform 4.3.1</li></ul>
BIRT 4.3.x Milestone Repo	<a href="http://download.eclipse.org/birt/update-site/kepler-interim">http://download.eclipse.org/birt/update-site/kepler-interim</a>	<ul style="list-style-type: none"><li>• BIRT 4.3.2 Milestone builds</li><li>• Only contains the latest version of Kepler Milestone</li><li>• Contents will be deleted when the release bits is published.</li><li>• In Kepler</li><li>• Work with Eclipse platform 4.3.x</li><li>• Requires <a href="http://download.eclipse.org/releases/maintenance">http://download.eclipse.org/releases/maintenance</a> update site</li></ul>
Release Repo	<a href="http://download.eclipse.org/birt/update-site/4.2">http://download.eclipse.org/birt/update-site/4.2</a>	<ul style="list-style-type: none"><li>• BIRT 4.2.0/4.2.1 Release builds.</li><li>• In Juno</li></ul>

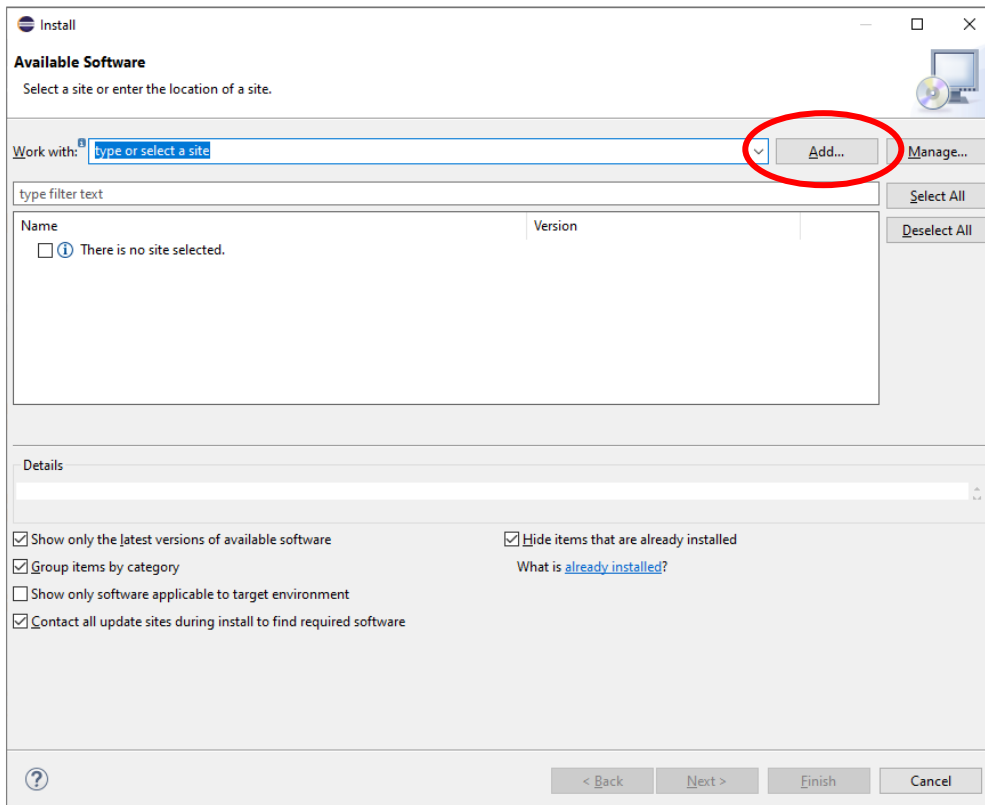
For Eclipse 4.4 (LUNA) or newer  
URL Update Site : <http://download.eclipse.org/birt/update-site/4.4>

## 2.3 Installer les outils de rapport BIRT dans Eclipse

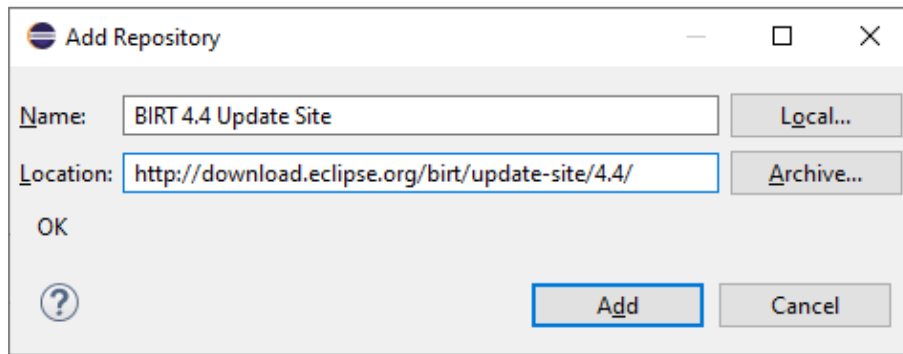
- aller dans Help



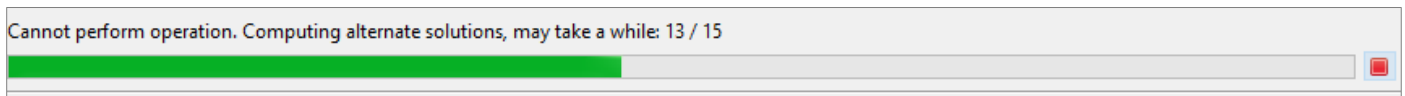
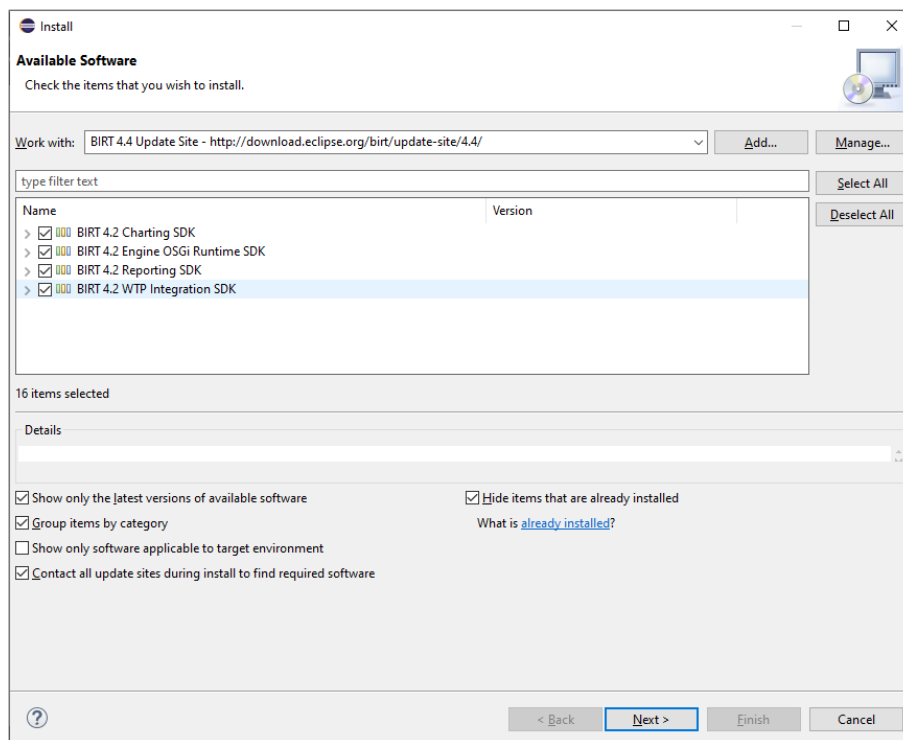
- sélectionner Install New Software ...



- presser le bouton **Add...**



- Saisir :
  - **Name:** BIRT 4.4 Update Site
  - **Location:** http://download.eclipse.org/birt/update-site/4.4/





**Install**

**Install Remediation Page**

The installation cannot be completed as requested.

Choose one of the following alternate solutions:

Keep my installation the same and modify the items being installed to be compatible

Update my installation to be compatible with the items being installed

Show original error and build my own solution:

**Solution Details**

Name	Version	Id
Will not be installed		
BIRT Framework		org.eclipse.birt.feature.group
Eclipse BIRT Chart Context Sensitive Help Documentation		org.eclipse.birt.chart.cshelp.feature.group
Eclipse BIRT Context Sensitive Help Documentation		org.eclipse.birt.cshelp.feature.group
Will be installed		
BIRT Chart Framework	4.4.2.v201410272105-829B7QFQCn...	org.eclipse.birt.chart.feature.group
BIRT Chart OSGi Runtime SDK Feature	4.4.2.v201410272105-7977385HCnE...	org.eclipse.birt.chart.osgi.runtime.sdk.feature.group
BIRT Engine OSGi Runtime SDK Feature	4.4.2.v201410272105-7977388UG5G...	org.eclipse.birt.osgi.runtime.sdk.feature.group
Eclipse Birt Chart Source Feature	4.4.2.v201410272105-829B7QFQCn...	org.eclipse.birt.chart.source.feature.group
Eclipse BIRT Chart Web Tools Project	4.4.2.v20150217-1805-5317w31261...	org.eclipse.birt.chart.integration.wtp.feature.group
Eclipse Birt Chart WTP Project Source Feature	4.4.2.v20150217-1805-5317w31261...	org.eclipse.birt.chart.integration.wtp.source.feature.group
Eclipse BIRT Documentation	4.4.2.v201410272105-5317w312522...	org.eclipse.birt.doc.feature.group
Eclipse BIRT Example	4.4.2.v201410272105-7T7R7DDZRD...	org.eclipse.birt.example.feature.group
Eclipse BIRT ISV Documents	4.4.2.v201410272105-5317w312522...	org.eclipse.birt.doc.isv.feature.group
Eclipse BIRT ISV Documents	4.4.2.v201410272105-5317w312521...	org.eclipse.birt.chart.doc.isv.feature.group
Eclipse BIRT Source Feature	4.4.2.v201410272105-DPEqA5GixA...	org.eclipse.birt.source.feature.group
Eclipse BIRT Web Tools Project	4.4.2.v20150217-1805-5317w31261...	org.eclipse.birt.integration.wtp.feature.group
Eclipse BIRT WTP Project Source Feature	4.4.2.v20150217-1805-5317w31261...	org.eclipse.birt.integration.wtp.source.feature.group

[?](#) [< Back](#) [Next >](#) [Finish](#) [Cancel](#)

**Install**

**Install Details**

Review the items to be installed.

Name	Version	Id
> BIRT Chart Framework	4.4.2.v201410272105-829B7QFQCnvK6GVLVWBZS	org.eclipse.birt.chart.feature.group
> BIRT Chart OSGi Runtime SDK Feature	4.4.2.v201410272105-7977385HCnE_lcoRfnZb_ws_EYMZ	org.eclipse.birt.chart.osgi.runtime.sdk.feature.group
> BIRT Engine OSGi Runtime SDK Feature	4.4.2.v201410272105-7977388UG5G7JLr24iG74g1JywE_	org.eclipse.birt.osgi.runtime.sdk.feature.group
> Eclipse Birt Chart Source Feature	4.4.2.v201410272105-829B7QFQCnvK6GVLVWBZS	org.eclipse.birt.chart.source.feature.group
> Eclipse BIRT Chart Web Tools Project	4.4.2.v20150217-1805-5317w3126132802916	org.eclipse.birt.chart.integration.wtp.feature.group
> Eclipse Birt Chart WTP Project Source Feature	4.4.2.v20150217-1805-5317w3126132802916	org.eclipse.birt.chart.integration.wtp.source.feature.group
> Eclipse BIRT Documentation	4.4.2.v201410272105-5317w31252229232A	org.eclipse.birt.doc.feature.group
> Eclipse BIRT Example	4.4.2.v201410272105-7T7R7DDZRDKeKDRz-RKDI	org.eclipse.birt.example.feature.group
> Eclipse BIRT ISV Documents	4.4.2.v201410272105-5317w31252229232A	org.eclipse.birt.doc.isv.feature.group
> Eclipse BIRT ISV Documents	4.4.2.v201410272105-5317w312521383216	org.eclipse.birt.chart.doc.isv.feature.group
> Eclipse BIRT Source Feature	4.4.2.v201410272105-DPEqA5GixAotSyyUGgiE15dZgVpeZ	org.eclipse.birt.source.feature.group
> Eclipse BIRT Web Tools Project	4.4.2.v20150217-1805-5317w3126132802916	org.eclipse.birt.integration.wtp.feature.group
> Eclipse BIRT WTP Project Source Feature	4.4.2.v20150217-1805-5317w3126132802916	org.eclipse.birt.integration.wtp.source.feature.group

Size: 234 024 KB

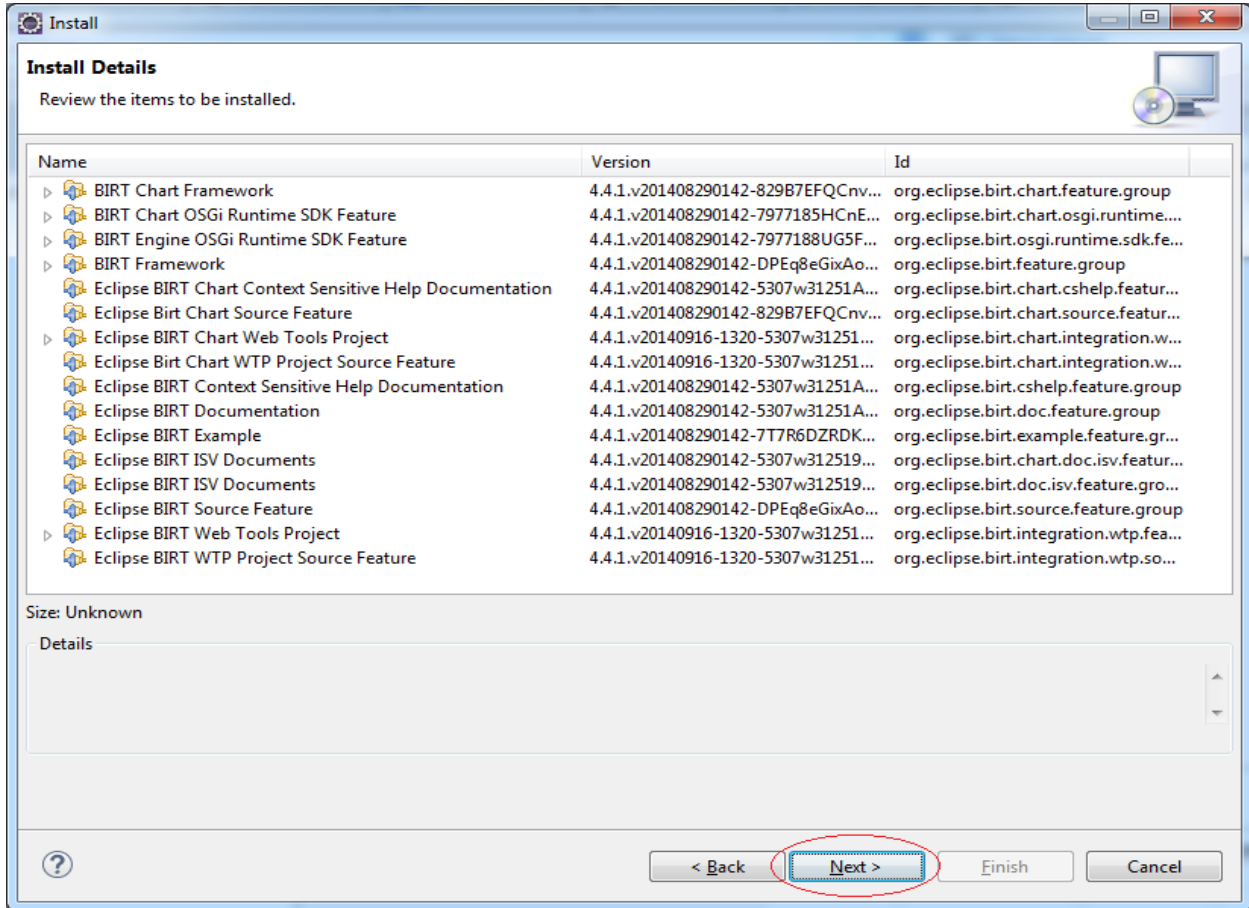
**Details**

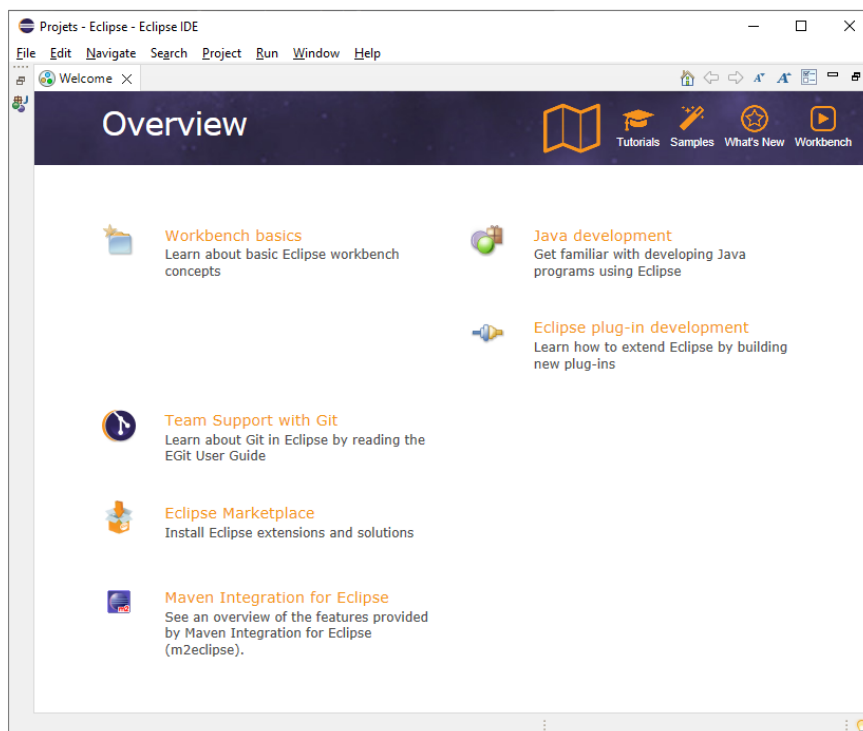
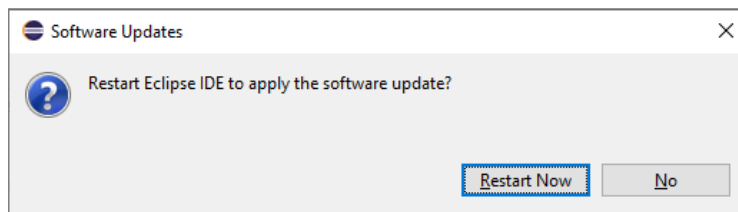
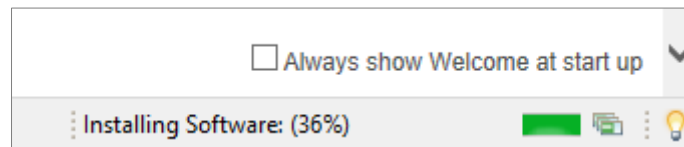
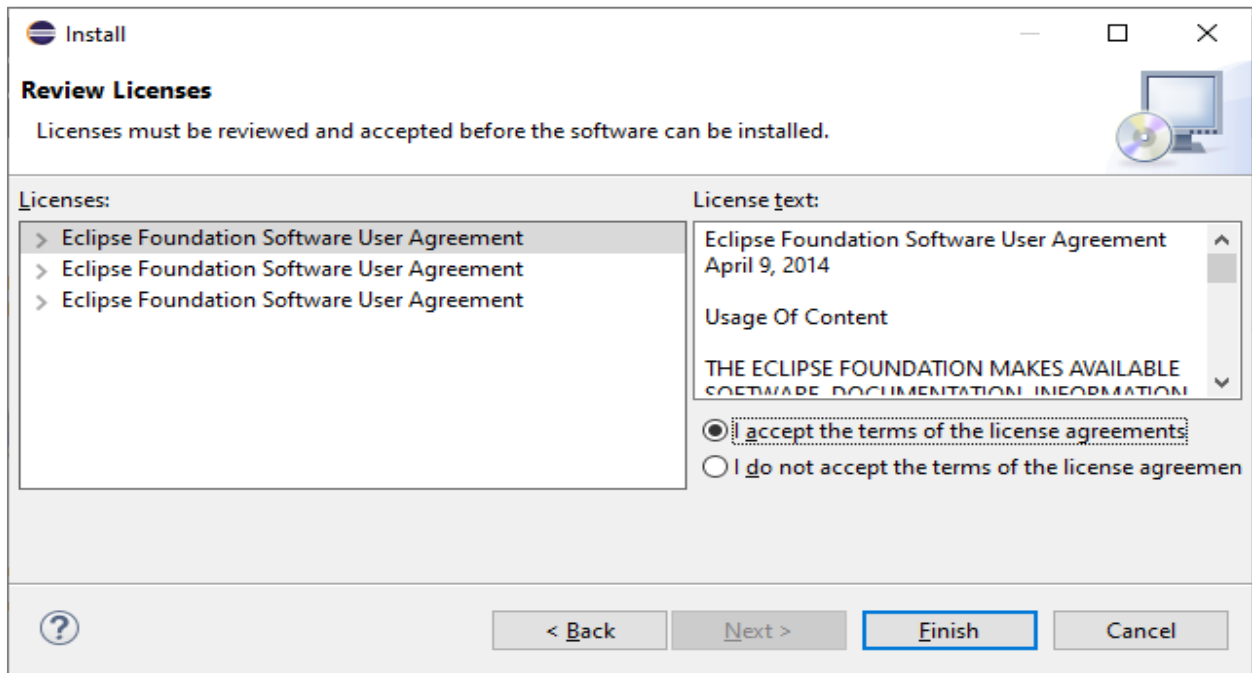
Eclipse Business Intelligence and Reporting Tools (BIRT) Chart Framework Plug-ins.

[More...](#)

[?](#) [< Back](#) [Next >](#) [Finish](#) [Cancel](#)

**On devrait avoir :**

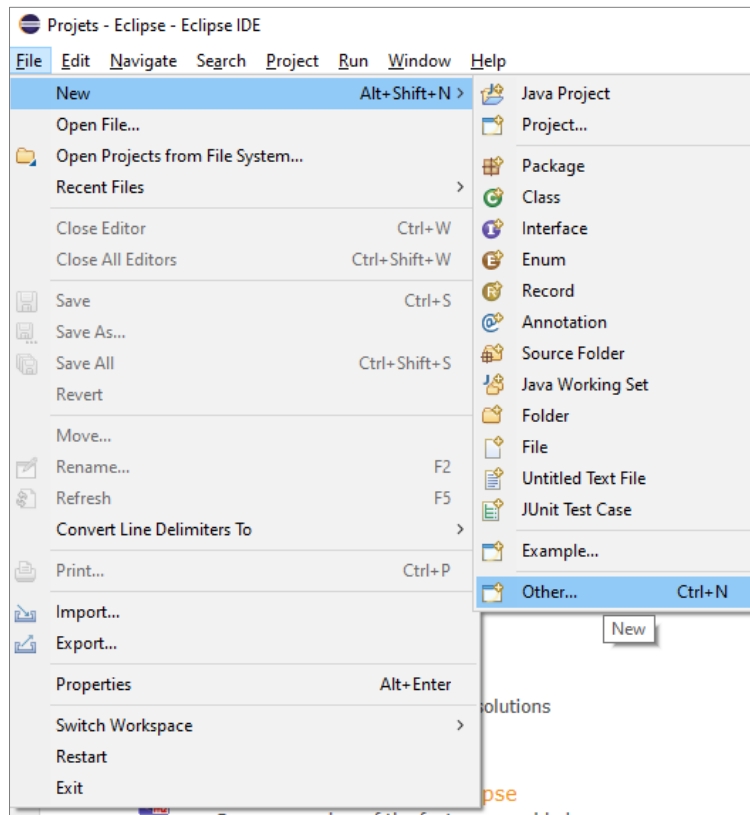


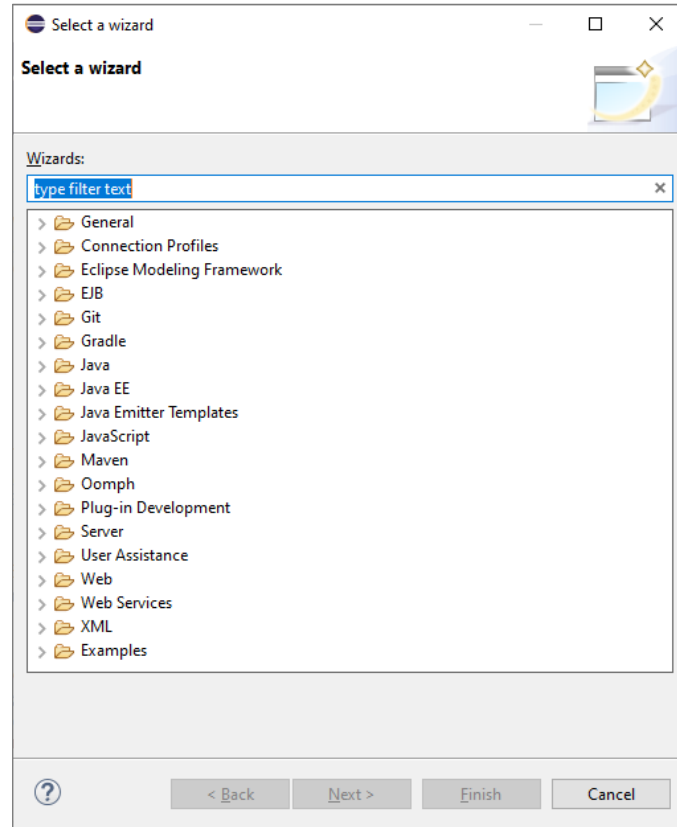


## 2.4 Vérifier après l'achèvement de l'installation

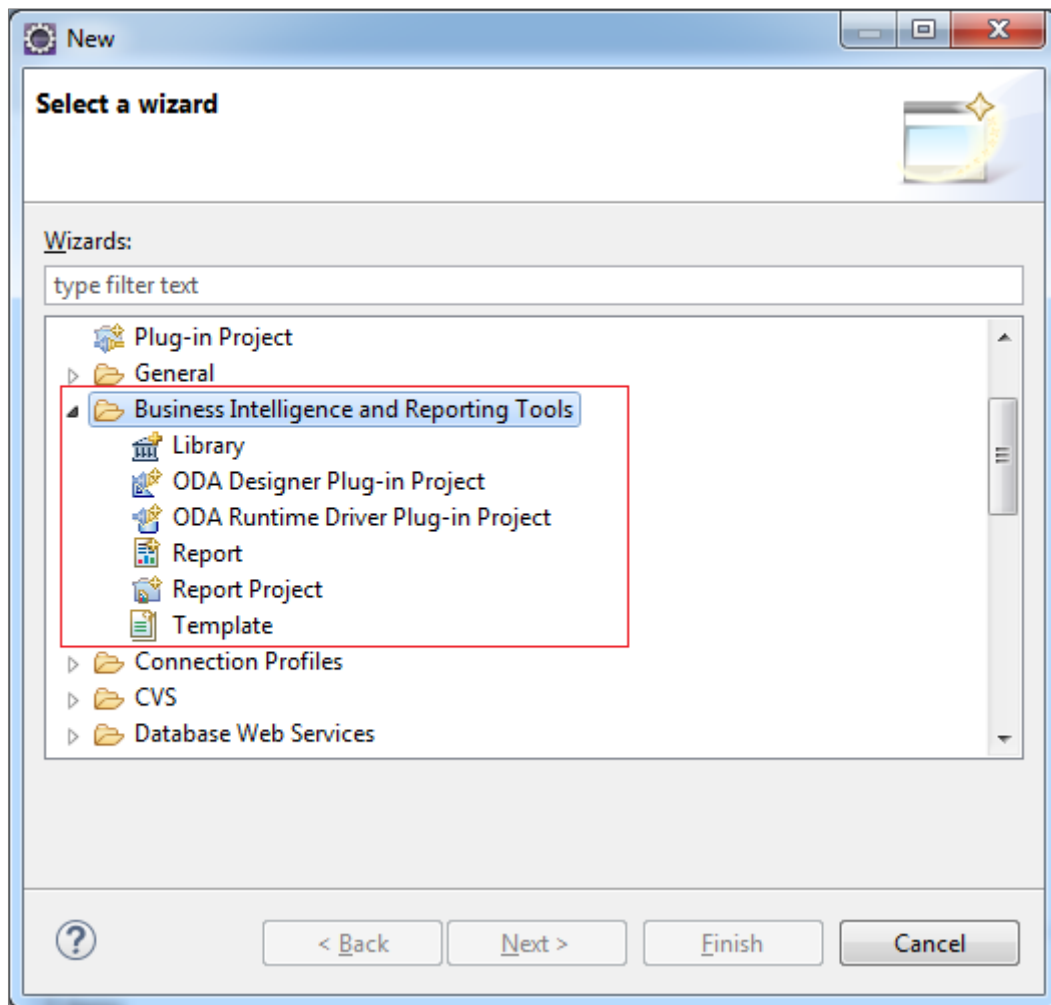
Après l'installation **BIRT** en **Eclipse** finit, vous pouvez vérifier.

- Sélectionner File/New/Other...





## On devrait avoir :



... tout est prêt pour programmer le rapport BIRT sur Eclipse.

## 2.5 Le didacticiel de la programmation de rapport BIRT pour des débutants

Avec BIRT vous pouvez voir le tutoriel **HelloWorld** à l'adresse suivante:

- [Le Tutoriel de programmation BIRT-Report pour débutant](#)