

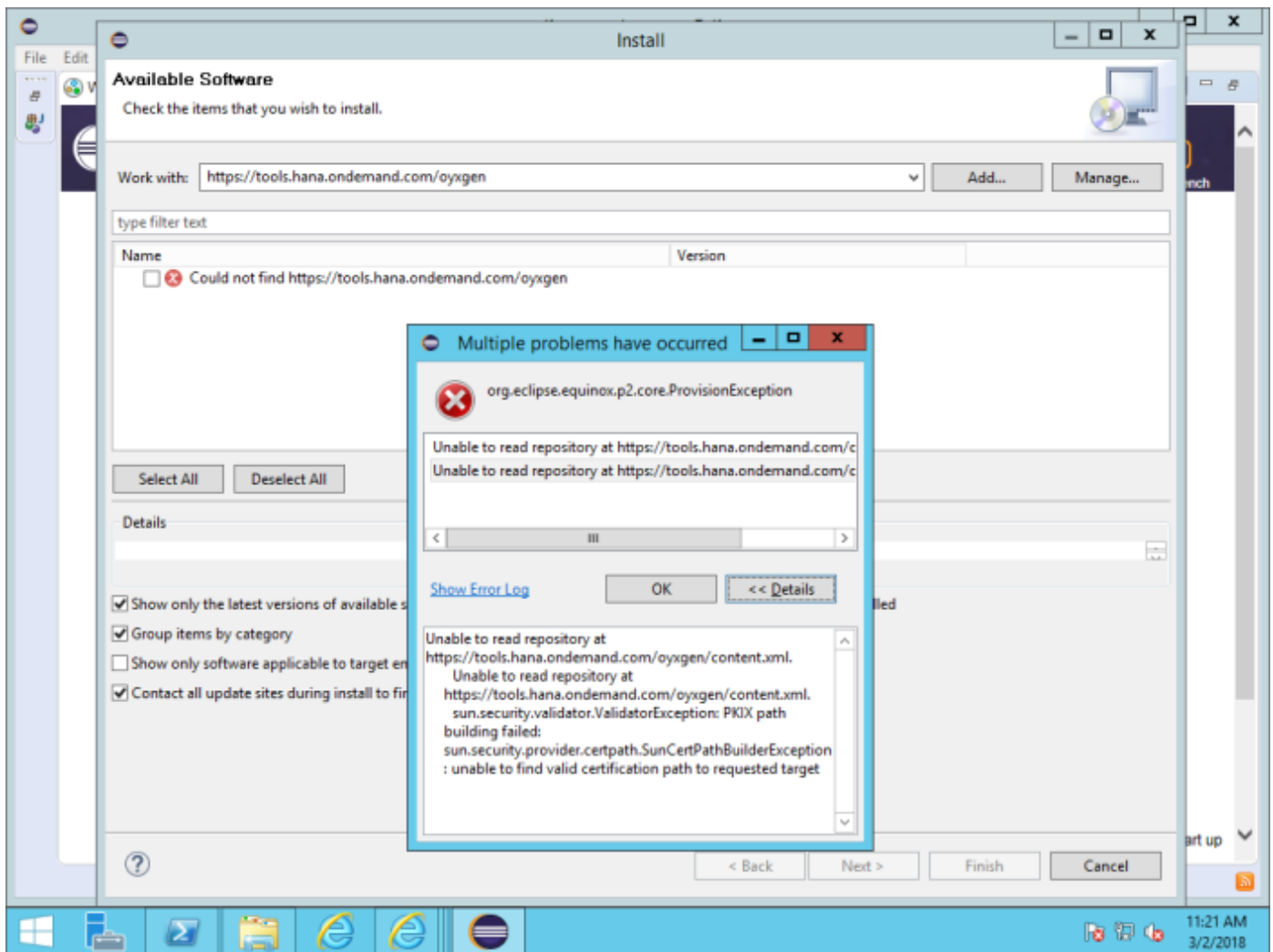
2616258 - unable to read repository at <https://tools.hana.ondemand.com/oxygen/content.xml>

Version	4	Type	SAP Knowledge Base Article
Language	English	Master Language	English
Release Status	Released to Customer	Category	Problem
Component	BC-DWB-AIE (Installation and infrastructure for ABAP tools in Eclipse)	Released On	13.08.2019

Please find the original document at <https://launchpad.support.sap.com/#/notes/2616258>

Symptom

According to the SAP tutorial guide, you are using URL <https://tools.hana.ondemand.com/oxygen> to install ABAP Development Tool in the Eclipse. In Eclipse, <https://tools.hana.ondemand.com/oxygen> could not be found as below:



Environment

SAP Development Tools for Eclipse

Reproducing the Issue

1. In the Eclipse menu bar, select **Help -> Install New Software...**
2. In the dialog box add URL <https://tools.hana.ondemand.com/oxygen>
3. Error "**Could not find <https://tools.hana.ondemand.com/oxygen>**" occurs

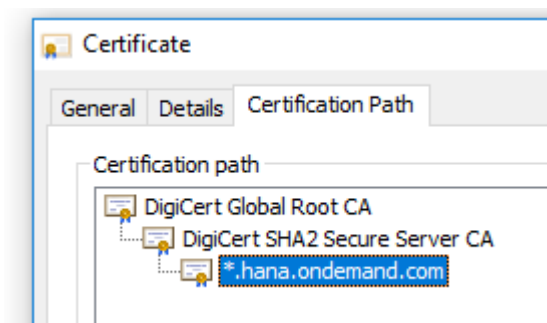
Cause

1. The certificate for the site "<https://tools.hana.ondemand.com/oxygen>" was not installed and recognized by the JDK installed.
2. The certificate path of <https://tools.hana.ondemand.com/> in your browser is incorrect.

Resolution

1. Please go through the link "[Sapstartsrv SSL access - SAP Netweaver Application Server Java - SCN Wiki](#)" to download the certificate from the site and install it in CACERT file in your JDK.
2. What is the certificate being used when you access <https://tools.hana.ondemand.com/oxygen> in your browser?
You can find out by clicking the small lock icon in the address bar and then check "Certificate Path".

As of Dec 7th, 2018, The certificate path is supposed to be: DigiCert Global Root CA > DigiCert SHA2 Secure Server CA > *.hana.ondemand.com.



If it is different, especially if your company name shows up in the chain, then your proxy seems to interfere the SLL communication. You might be able to fix this problem by importing your companies SSL certificate into the JVM that you use for the running Eclipse.

See Also

[SAP Development Tools for Eclipse Installation: FAQ and Known Issues](#)

Keywords

Could not find <https://tools.hana.ondemand.com/oxygen>, unable to read repository at, Install New Software, certificate path, unable to find valid certification path to requested target, IDM, Developer Studio, PKIX path building failed

Other Components

Component	Description
BC-IAM-IDM	Identity Management

This document refers to

SAP Note/KBA	Title
	Sapstartsrv SSL Access
	SAP Development Tools for Eclipse Installation: FAQ and Known Issues

[Terms of use](#) | [Copyright](#) | [Trademark](#) | [Legal Disclosure](#) | [Privacy](#)