

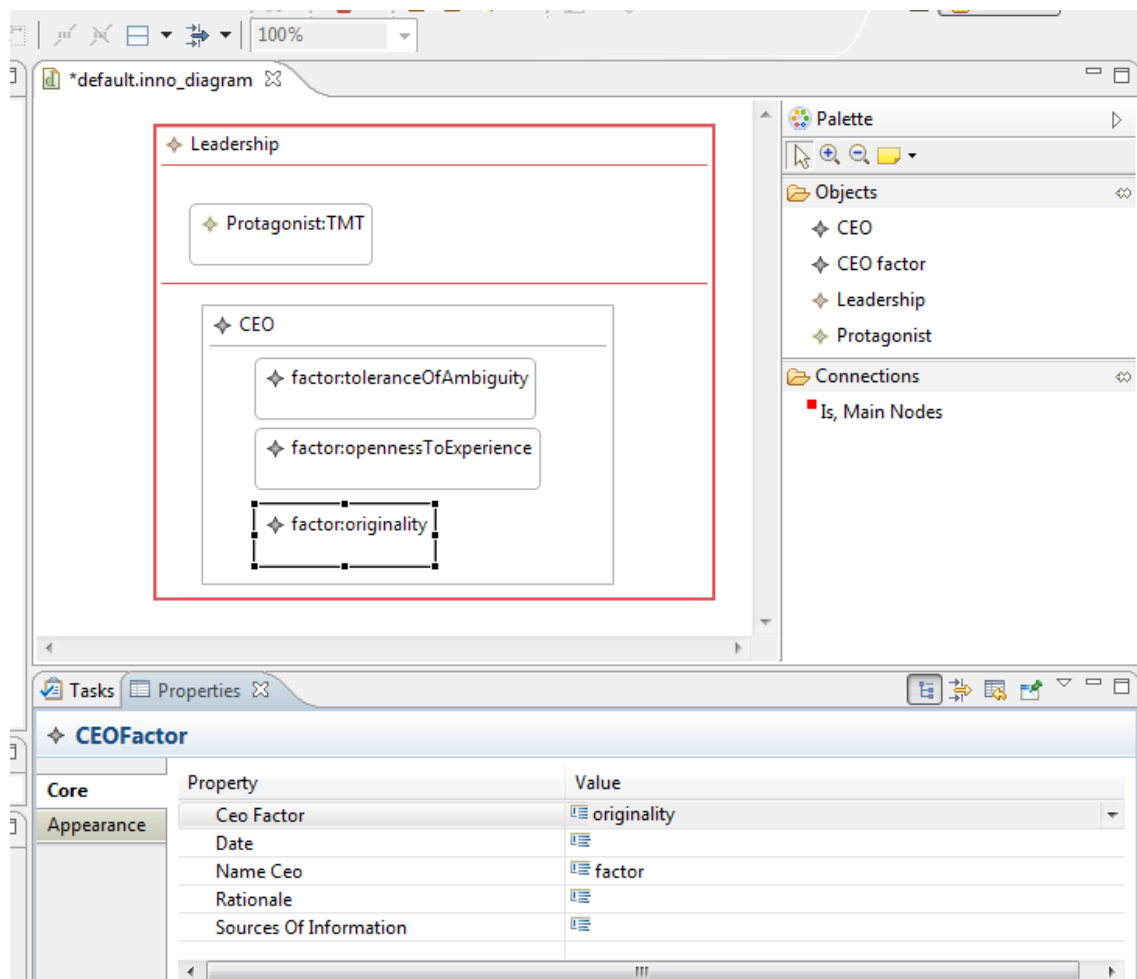
MINIMAL EXAMPLE TO: [EGL] How to show in a static section different symbols? [message #990592]

Epsilon version → Epsilon Core (Incubation) 0.9.1.201107251201

Note: I used a GMF Project, and I generated my metamodel with Emfatic.

What do I need?

I only included a part of the metamodel. As result, the user can define, for example the next model:



For this example appears:

|DETERMINANTS OF INNOVATION:|
LEADERSHIP

The protagonist of the innovation is: TMT
Factors that influence in the leaders' ability and motivation to innovate:

CEO Factors:

â™¦ toleranceOfAmbiguity

â™¦ opennessToExperience

â™¦ originality

And I need this:

| DETERMINANTS OF INNOVATION: |
LEADERSHIP

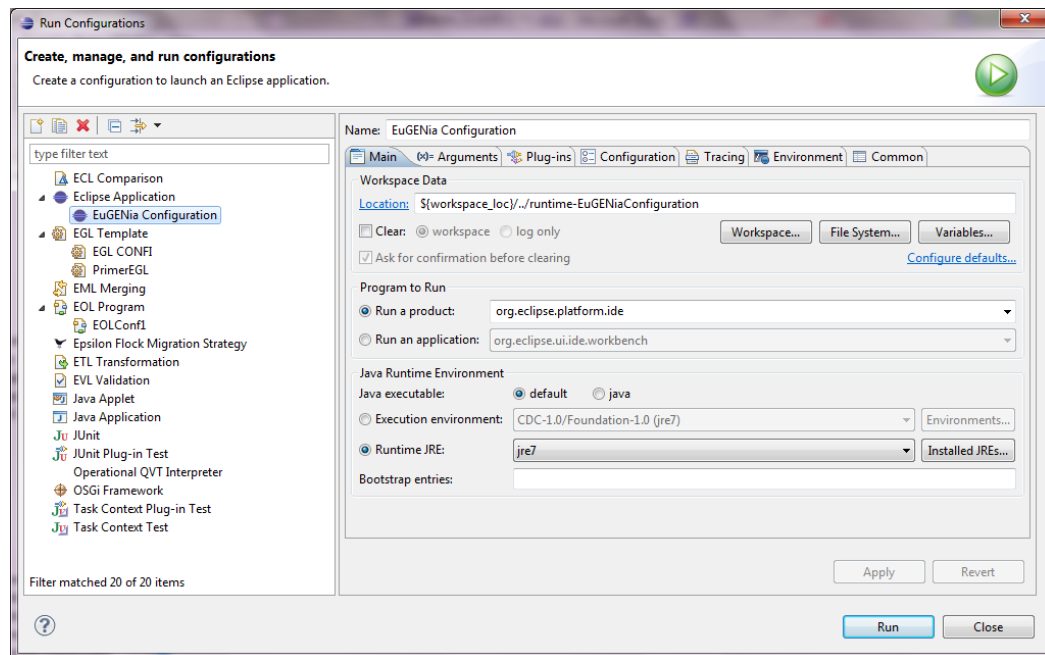
The protagonist of the innovation is: TMT
Factors that influence in the leaders' ability and motivation to innovate:

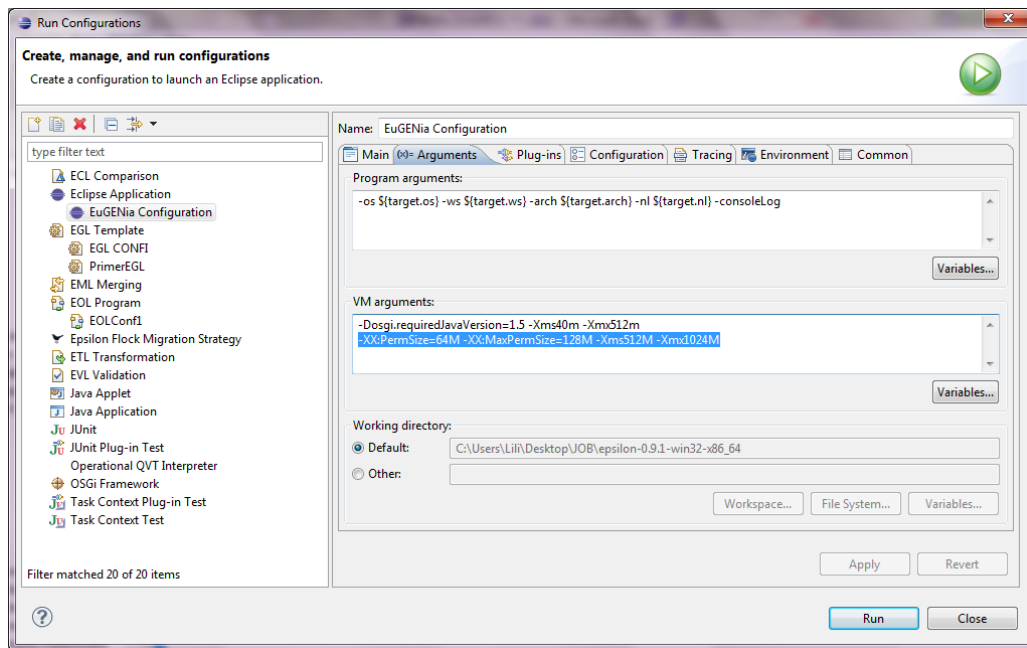
CEO Factors:

- ◆ toleranceOfAmbiguity
- ◆ opennessToExperience
- ◆ originality

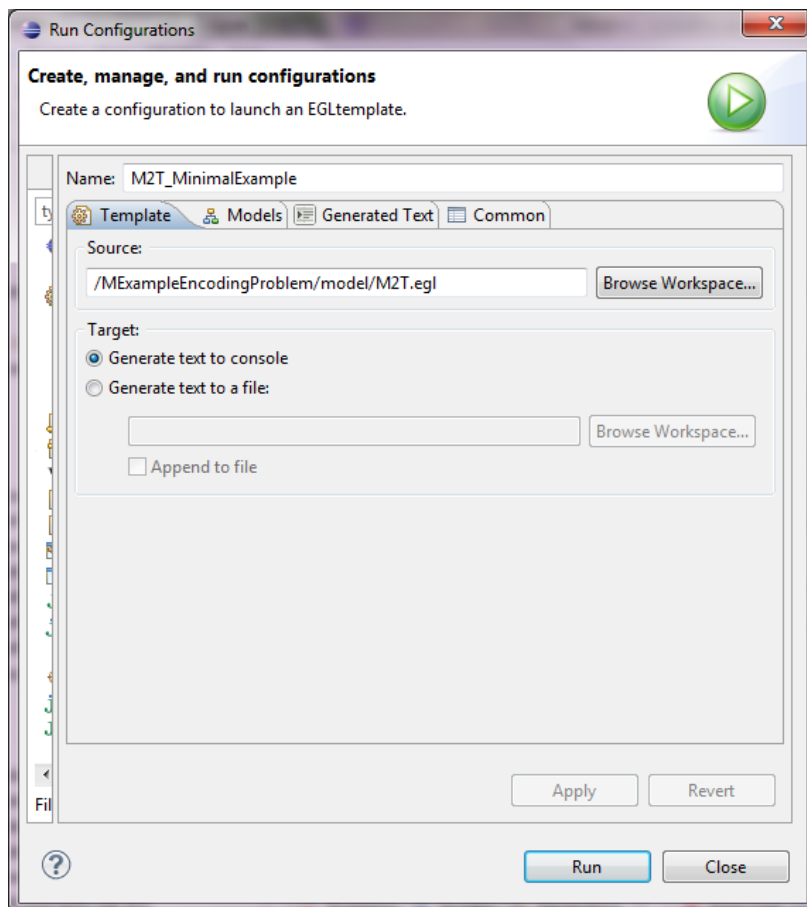
CONFIGURATIONS:

EuGENia Configuration:





EGL Configuration.



Models→Add→EMF Model

Configure EMF model

Configure EMF model
Configure the details of the EMF model

Identification

Name:

Aliases:

Performance

☒ Cache model elements to improve execution time

EMF

☒ Meta-model is file-based
☒ Include external references

Files/URLs

Model file:

Meta-model file:

Meta-model URI:

Load/Store Options

Read on load: ☒
Store on disposal: ☒