

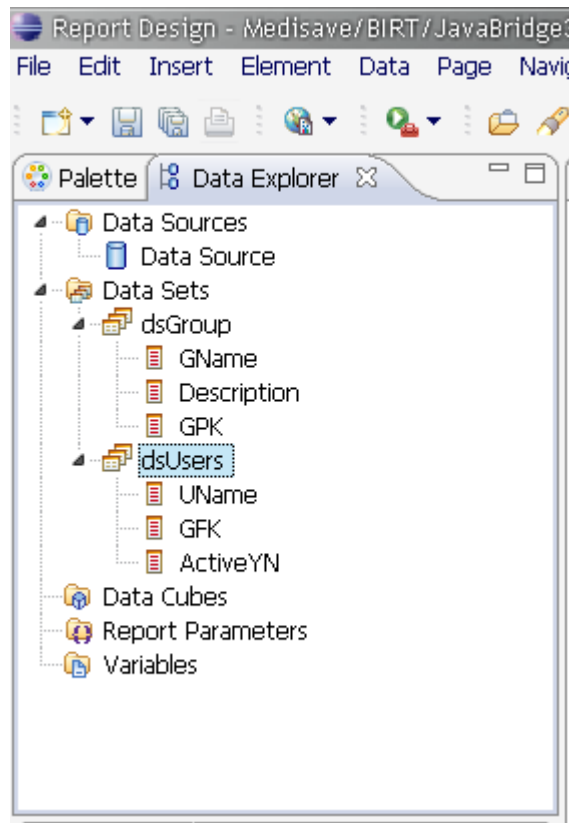
## Inner Dataset Example

Taking an example of Groups and Users. The table Groups has one to many relationship onto Users  
The report must show something like that:

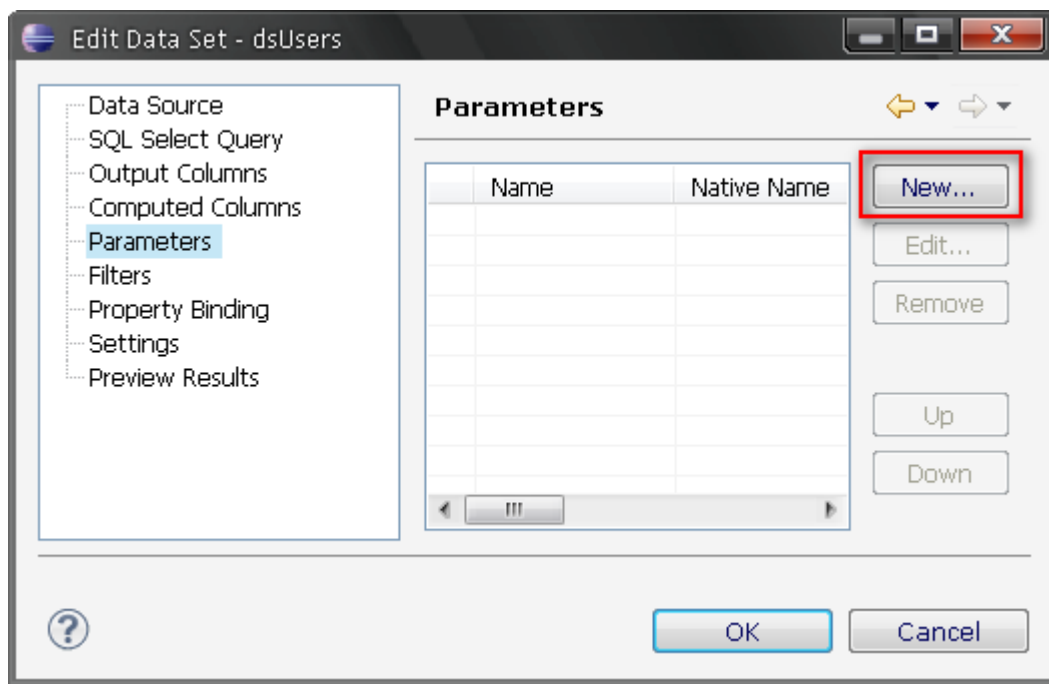
Group 1 Details of Group 1	User 1 from Group 1
	User 2 from Group 1
Group 2 Details of Group2	User 3 from Group 2
	User 4 from Group 2

Step1 : Create the group data set (dsGroup) with desired columns. The selected Columns are say GroupID, Name, Description.  
The key of the table GroupID must be in the dataset

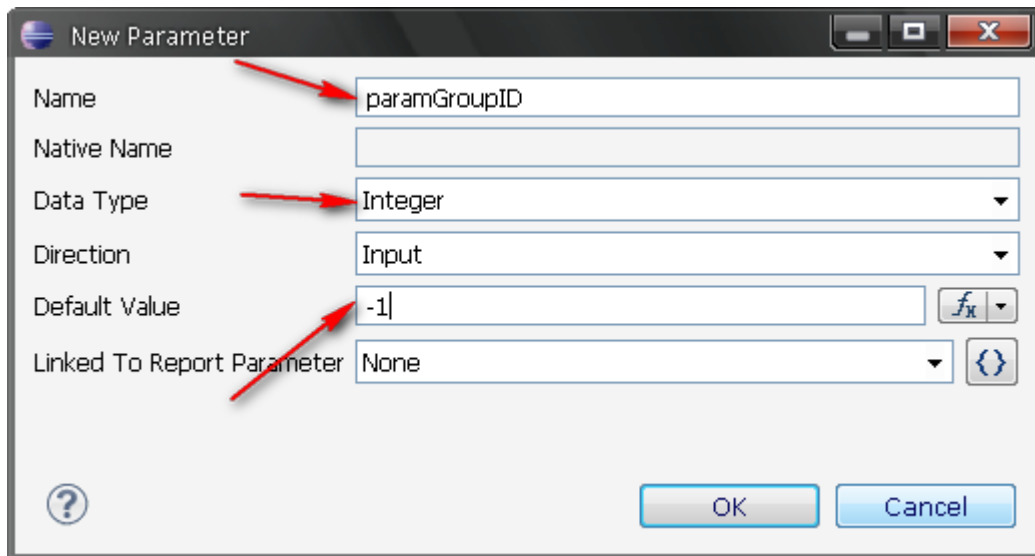
Step 2: Create the user dataset (dsUsers) with the columns of users to be displayed.



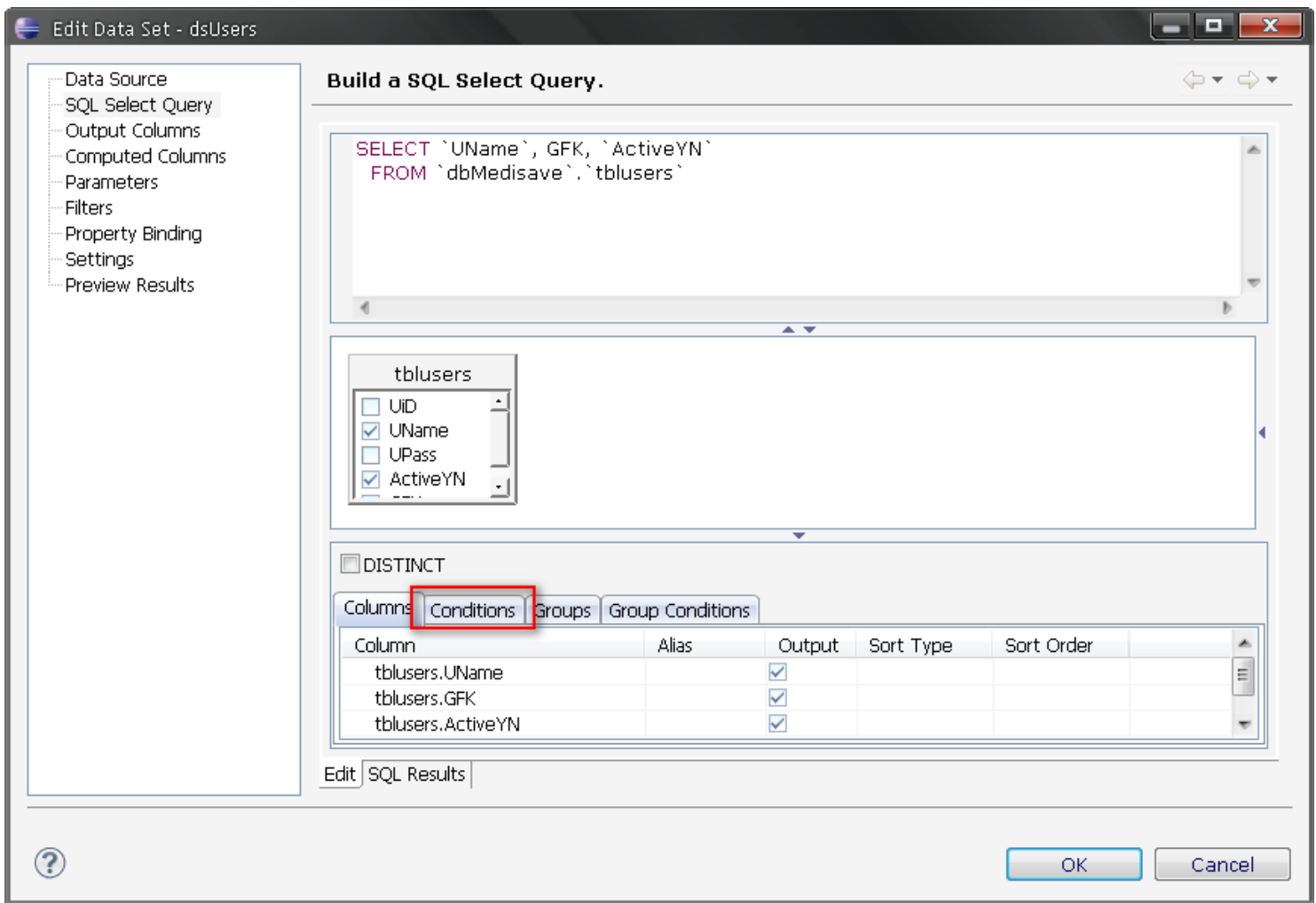
Step 3: add a parameter to the dataset Users. Edit the dataset dsUsers and goto the parameter menu from the treewiew. Then click on New.



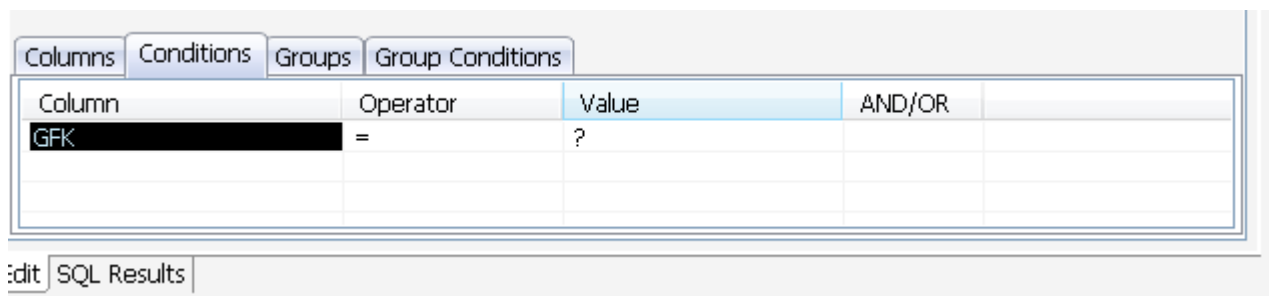
Step 4: In the parameter definition window, enter the parameter name of your choice, the datatype and a default value *must* be entered. Set it to 0 or -1.



Step 5: Now, again editing dsUsers, goto the SQL Select Query pane, and select the conditions tab below: We are going to add the parameter to the query so that only users belonging to a specific group will be displayed.

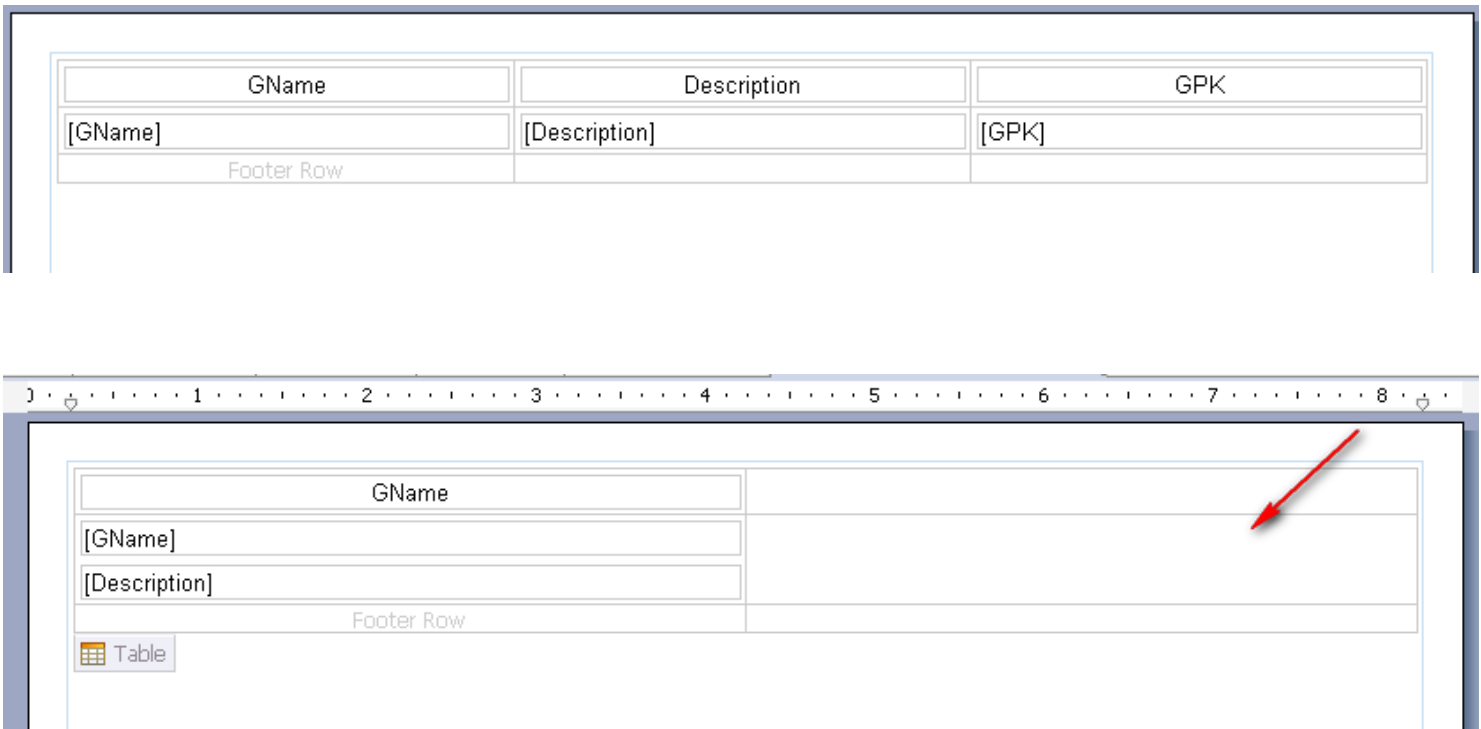


In the conditions tab, add the condition for the Group foreign key and click OK



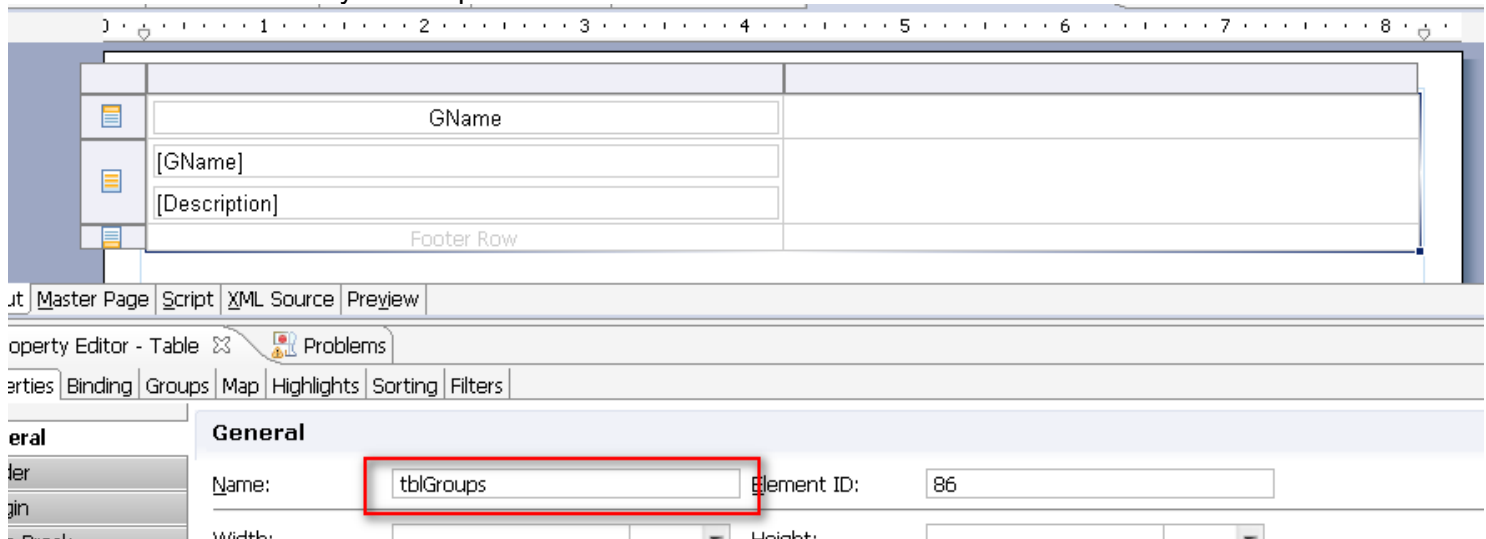
Step 6: Now drag and drop the dataset group onto the report and format as necessary:

## Inner Dataset Example



Note that there is cell on the right left blank to be used for the users. It will be nice to remove all padding in that cell so that the columns of user details fit well into the group table. To do that, select the cell, goto properties > padding and set them all to 0.

Also name the table to say tblGroups. We will need it later.



Step 7: Now drag and drop the dataset users into the blank cell on the right:

## Inner Dataset Example

GName				
[GName]		UName	GFK	ActiveYN
[Description]		[UName]	[GFK]	[ActiveYN]
Footer Row				

Table

Note that the dataset comes with the header. We can remove it and replicate it in the group header. Otherwise, for each group, there will be a header username etc,.. This depends on your need.

Group Name	UserName	Active
[GName]	[UName]	[ActiveYN]
[Description]		
Footer Row		

I have placed a grid in the header above the user dataset with the title columns matching these of the user data columns.

Step 8: We need to set the parameter in the dataset users to the group ID being populated at each detail row format. To do that, select the users table and goto Binding tab and click on dataset parameter binding:

Layout Master Page Script XML Source Preview

Property Editor - Table Problems

Properties Binding Groups Map Highlights Sorting Filters

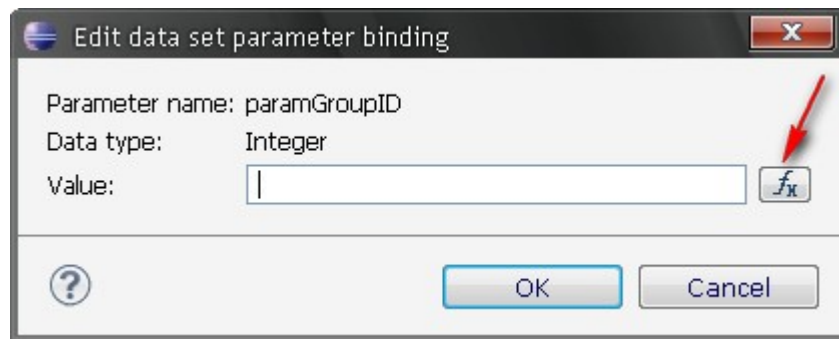
☒ Data Set: dsUsers [Data Set Parameter Binding...](#)

☐ Report Item:

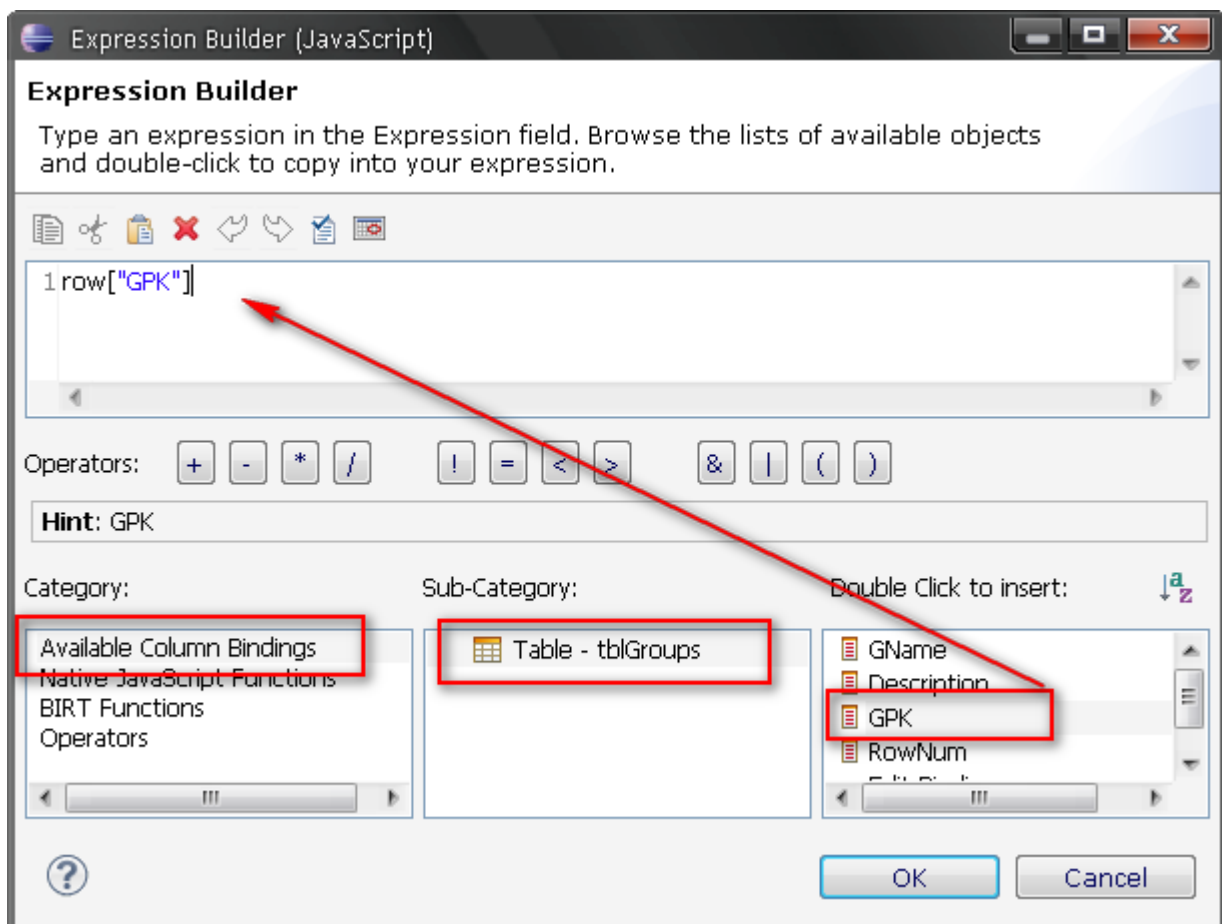
Data Column Binding:

Name	Display Name ID	Display Name	Data Type	Expression	Function	Filter
------	-----------------	--------------	-----------	------------	----------	--------

Select the paramGroupID we created initially and click on edit. In the window that pops up, click on the Fx button:



Step 9: Nearly there... In the Category select available column bindings, then in sub category select tblGroups and finally *double* click on GPK. Then OK > OK > OK.



Step 10: Finally..

# Inner Dataset Example

Group Name	UserName	Active
SUPERVISOR	USER 3	Y
SUPERVISOR GROUP	KMAN	Y
MEDSEC	USER 8	Y
REGISTRATION:OP, INVOICE, RECEIPTS	USER 8	Y
FRONT OFFICE	USER 1	Y
REGISTRATION:IP/OP/EM, INVOICE, RECEIPTS	USER 6	Y
PHARMACY	USER 2	Y
REGISTRATION:OP, INVOICING	USER 10	Y
	USER 11	Y
CASUALTY	USER 4	Y
REGISTRATION: OP/EM, INVOICING	USER 5	Y
	USER 12	Y
BACK OFFICE	USER 7	Y
INVOICING, STATACC, AGEING, DEBTORS		