

Accessing the Source Code of Epsilon from CVS

Dimitrios Kolovos
Dept. of Computer Science, The University of York
dkolovos@cs.york.ac.uk


Introduction


The purpose of this document is to describe the process of setting up a local copy of the source code of Epsilon from the Eclipse CVS server (**dev.eclipse.org**) using Eclipse 3.2+.

Prerequisites

Download and install Java 1.5+, Eclipse 3.2+, the latest version of EMF and (optionally) the latest version of GMF.

Accessing the code

1. Switch to the **CVS Repository Exploring** perspective (from the **Window->Open Perspective->Other...** menu)
2. Click the **Add CVS Repository** button () on the **CVS Repositories** view and enter the following configuration details (no password required for user **anonymous**):



Add CVS Repository

Add a new CVS Repository
Add a new CVS Repository to the CVS Repositories view

Location

Host: dev.eclipse.org

Repository path: /cvsroot/technology

Authentication

User: anonymous

Password:

Connection

Connection type: pserver

Use default port

Use port:

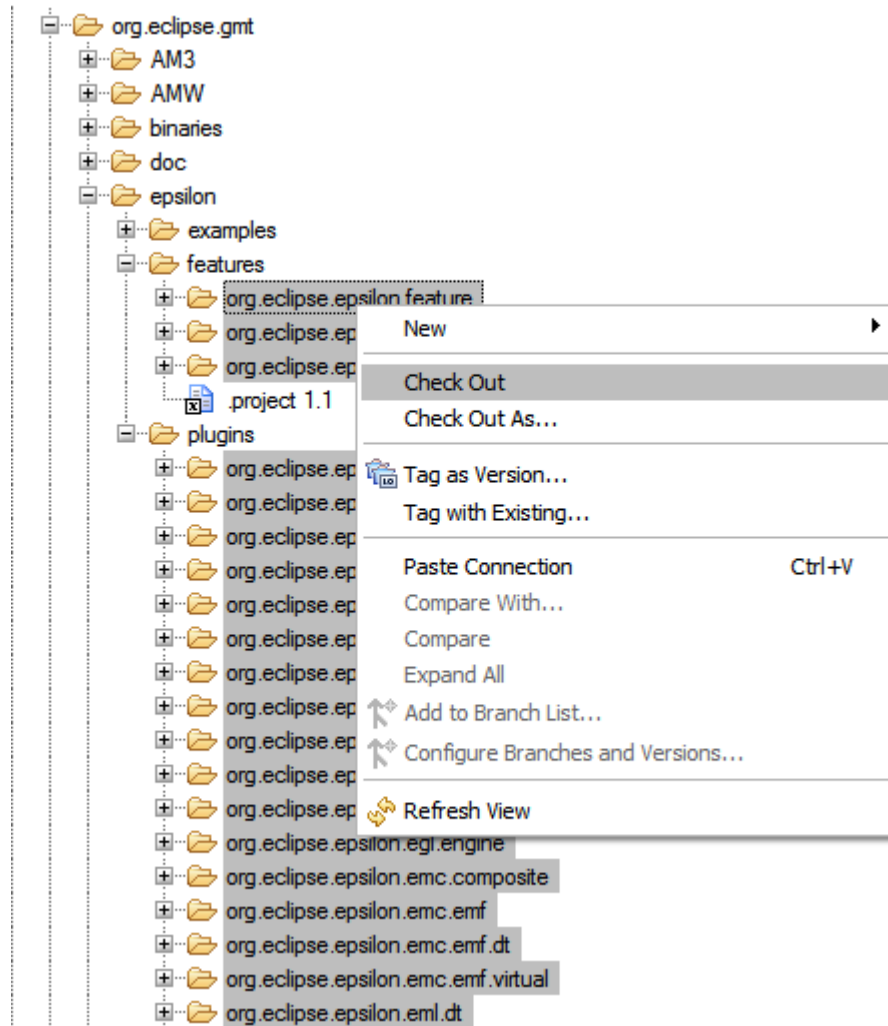
Validate connection on finish

Save password

⚠ Saved passwords are stored on your computer in a file that is difficult, but not impossible, for an intruder to read.

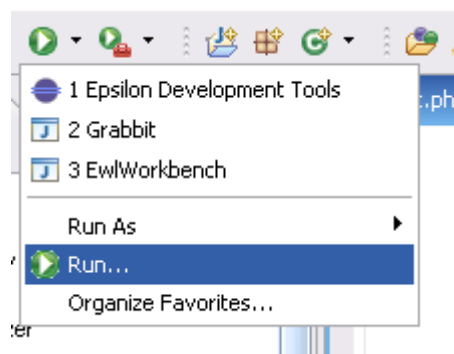
Finish Cancel


- Open the **HEAD** (↑) node and navigate to **org.eclipse.gmt/epsilon**
- Select the sub-folders of **epsilon/plugins** and **epsilon/features**, right-click and check them out as follows (it is only if you check out the **org.eclipse.epsilon.evl.gmf** plugin and **org.eclipse.epsilon.gmf.feature** GMF integration project that you will need GMF):

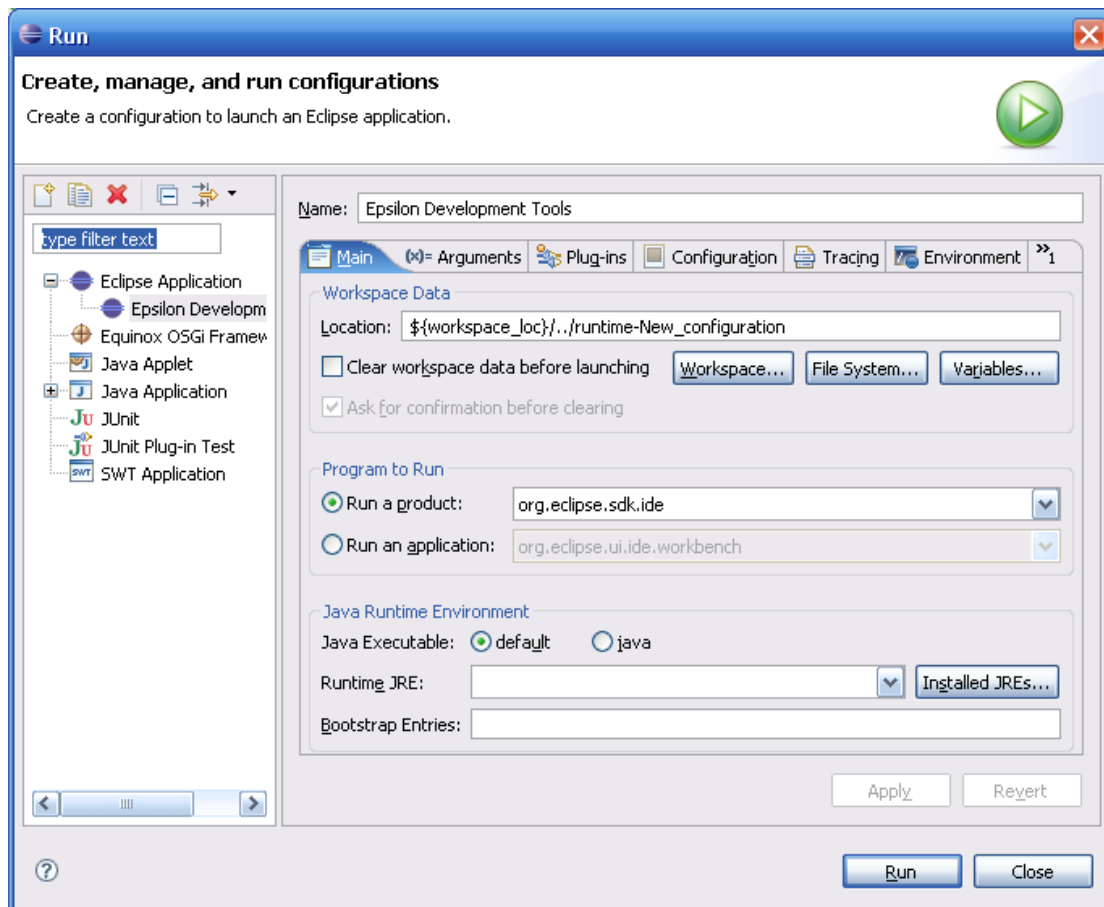


Launching Epsilon

Now switch to the **Plug-in Development Perspective** (from **Window->Open Perspective->Other...**) and click the **Run** menu



and in the dialog that appears, create a new **Eclipse Application** launch configuration by selecting the **Eclipse Application** node and clicking the **New Launch Configuration** () button.



Now click the **Run** button on the bottom right of the dialog. A new instance of Eclipse should start.