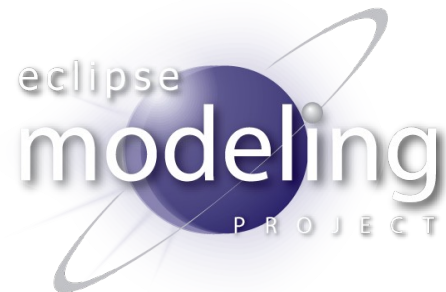


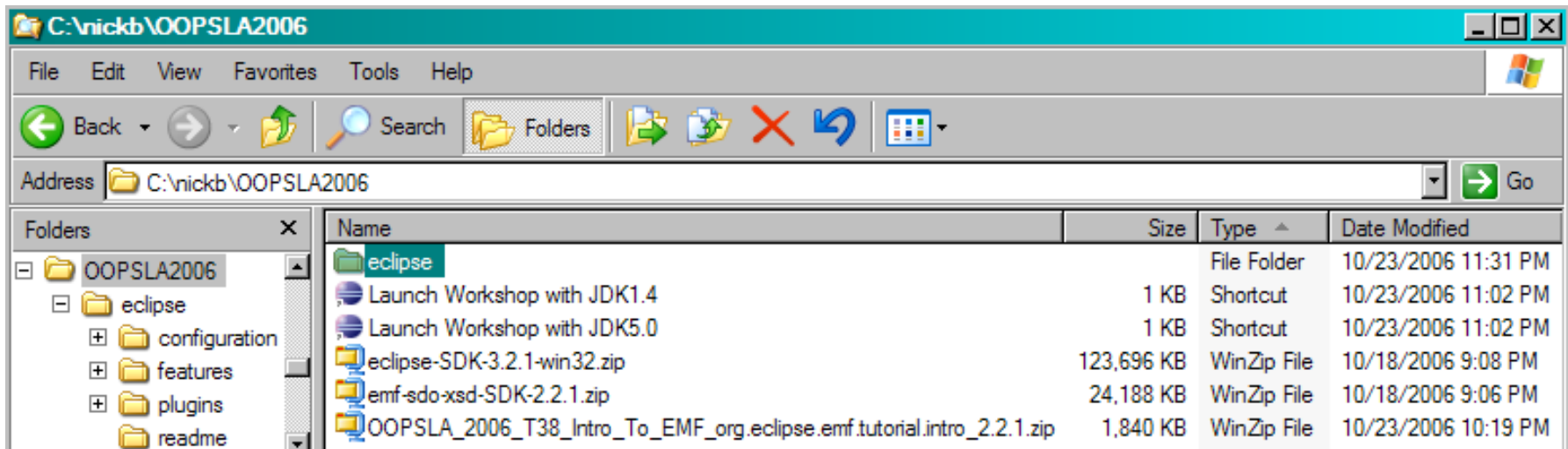
Setting up Eclipse and EMF: One Simple Approach

Nick Boldt and Marcelo Paternostro
IBM Rational Software
Toronto, Canada
EMF Project



Setup (for Windows)

1. Download Eclipse 3.2.1 and EMF 2.2.1 from:
<http://www.eclipse.org/downloads/>
<http://www.eclipse.org/emf/downloads/>
2. Download Workshop Materials from:
<http://www.eclipse.org/emf/docs/presentations/OOPSLA/>
3. Collect all zips in a single folder which will house both Eclipse and your Workspace.
1. Unzip all three zips into that folder. If using Winzip, use "Extract to Here"; or, just target current folder.
2. When unzipping both Eclipse and EMF to the same place, you will be prompted to override a few license files. This is normal.
3. Install JDK or JRE, eg., from:
<http://java.sun.com/javase/downloads/>
4. Launch eclipse/eclipse.exe (or with custom shortcut)



Launcher (for Windows)

- Specify path to Eclipse, JDK, and Workspace
 - Target:
C:\nickb\OOPSLA2006\eclipse\eclipse.exe -clean -vm
C:\java\JDK50\bin\java.exe -data C:\nickb\OOPSLA2006\workspace50
 - Start in:
C:\nickb\OOPSLA2006\eclipse

