



# The JSF Tools Project

Eclipse Webinar Presentation

## Presenters

Raghu Srinivasan, Project Lead, Oracle Inc.

Cameron Bateman, Committer, Oracle Inc

January 23, 2007

# Agenda



- Overview
- Features
- Demo
- New Features
- Resources
- Q&A

# Overview



- Provide comprehensive support to the Eclipse Web Tools Project (WTP) to simplify development and deployment of JavaServer Faces (JSF) applications
- Key Contributions
  - Oracle
    - Project Lead + 3 committers
    - Tech-preview release shipped with WTP 1.5 release
    - First release of the project as part of the Eclipse Europa release
  - Sybase
    - Faces Configuration Editor, Visual JSF Page Designer
  - IBM
    - EMF Model of the Faces Configuration resource

# Features



- Visual JSF-JSP Page Designer
- Faces Configuration Editor
- JSF Library Registry

# Visual JSF-JSP Page Designer

The screenshot shows the Visual JSF-JSP Page Designer interface. At the top, there are several tabs for files: login.jsp, carDetail.jsp, confirmChoices.jsp, faces-config.xml, and storeFront.jsp. The main workspace is divided into three sections. The top section is a design view showing a 'CAR DEMO' header and a form with fields for buy title, engine, and brakes. The middle section is a code view showing the corresponding JSP code for an output text component. The right side has an 'Outline' panel showing a tree view of the page structure. At the bottom, there is a 'Properties' panel for the selected component, showing its ID, value, binding, and style.

login.jsp carDetail.jsp confirmChoices.jsp faces-config.xml storeFront.jsp

OutputText

#{buyTitle}

#{Engine}	#{engine}
#{Brakes}	#{brake}

```
<h:outputText value="#{carstore.currentModel.attributes.brake}" />  
<h:outputText value="#{bundle.Suspension}" />
```

Design Preview

Problems Javadoc Declaration Properties

Quick Edit ID:

Attributes Value: #{carstore.currentModel.attributes.brake}

Binding:

Style:  Edit...

# Visual JSF-JSP Page Designer



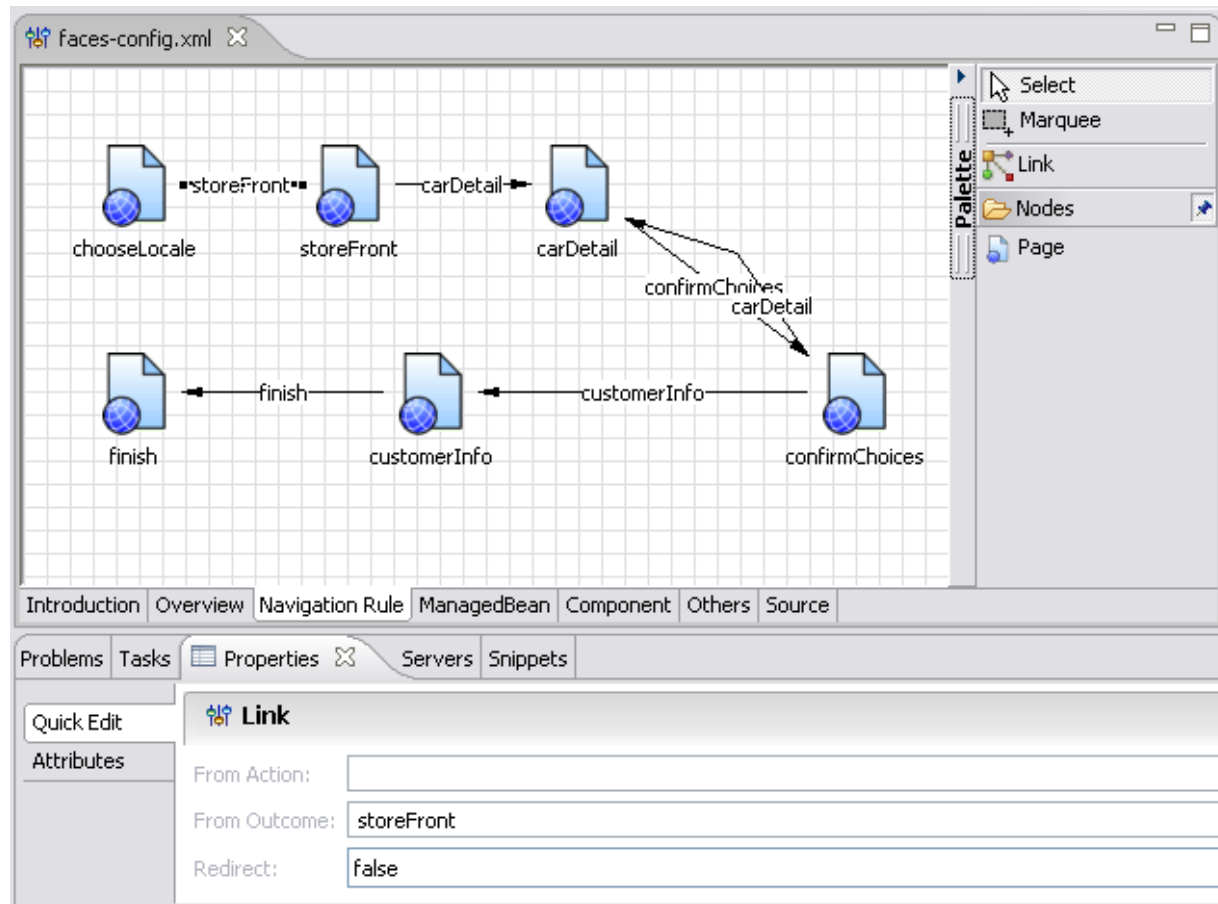
- Multi-page Editor
- Visual Page Designer
  - Provides close-to-WYSIWYG editing experience.
  - Split-pane window shows both the Design and the Source view with options to switch to a Source-only or a Design-only view
- Source Editor
  - Gives content assists and provides both syntax and semantic validations.
  - Contents in the Source Editor are kept in sync with changes in the Designer
- Preview Page
  - Renders the page as it would look in a browser

# Visual JSF-JSP Page Designer



- Fly-out Component Palette
  - Supports Drag & Drop editing
- Property View
  - Groups key attributes of the selected tag in an accordion style tabs
- Outline view
  - Displays the content of the current page in an hierarchical form

# Faces Configuration Editor

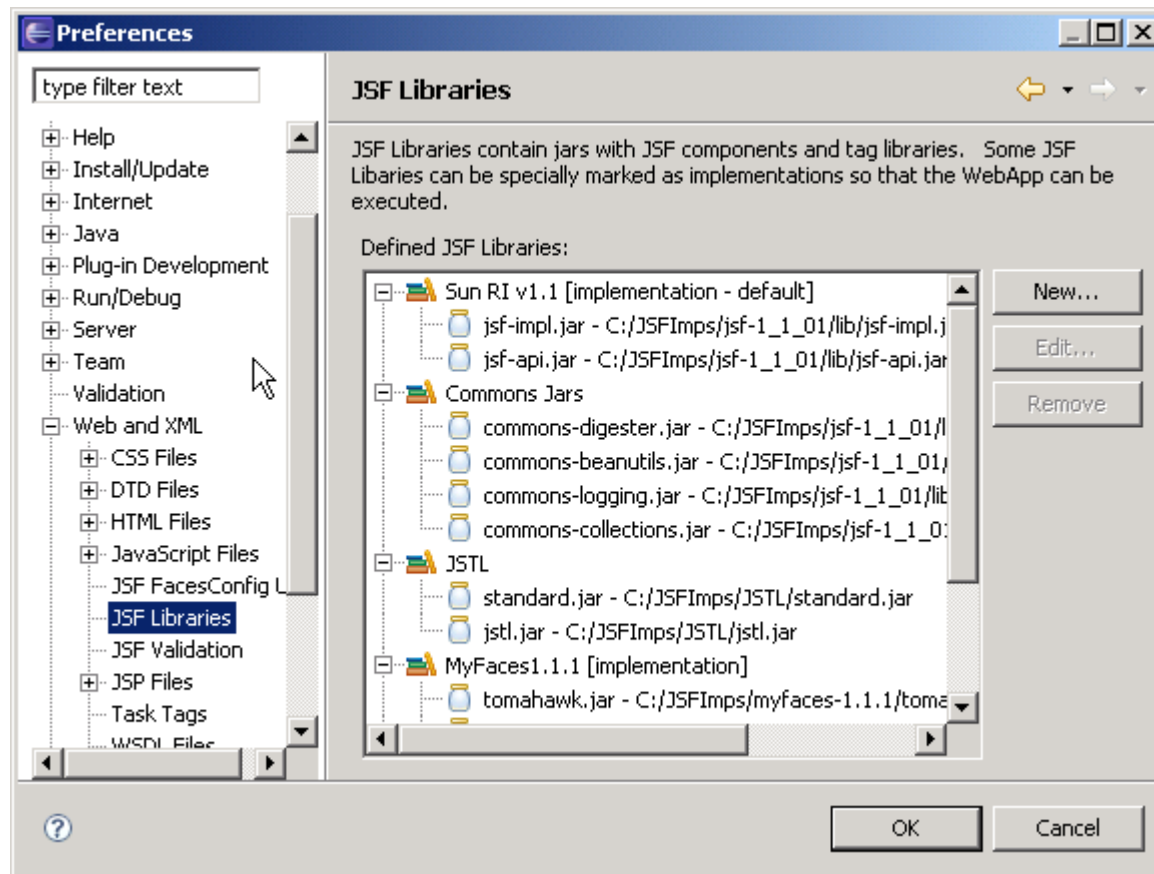


# Faces Configuration Editor



- Multi-page editor
- Overview Page
  - Summary of elements in the configuration file
- Navigation page
  - Graphical diagram editor for navigational rules
- Managed bean page
  - Form-based editor, Wizards
- Component and Others Page
  - Form-based editor for components, render kits, validators and other artifacts
- Source Page
  - Contents kept in sync with changes in other pages
- EMF model of the application configuration resource files
  - Programmatic access

# JSF Library Registry



# JSF Library Registry



- Define a named collection of JARs including tag libraries, JSF reference implementations and utility jars.
- Add, remove libraries associated with a project
- Automate build classpath and deployment
- Extension point for component developers to contribute their libraries

# Demo



- Build a basic JSF application
- Focus on the Visual Page Designer to highlight features including the following
  - Clean Look and Feel
  - Improved Selection capability
  - Enhanced visual hinting for D&D target
  - Content Assists and Validations in the Source Editor
- Communicate new features planned for the Europa release

# New Features



- Planned for the Eclipse Europa release
- Visual Page Designer Features
  - Metadata driven, extensible architecture to simplify visual editing support for any component library
  - Render both visual and non-visual components
  - Show/hide components
  - Link related components by Drag and Drop
  - Enhanced context menus to aid in selection and navigation
  - Outline view to support add, move, delete operations
- Support for JavaServer Faces 1.2 (Java 5 EE)
- Metadata Repository

# Resources



- JSF Tools Project Home
  - <http://www.eclipse.org/webtools/jsf>
- JSF Tools Project Wiki
  - [http://wiki.eclipse.org/index.php/JSF\\_Tools\\_Project](http://wiki.eclipse.org/index.php/JSF_Tools_Project)
- Visual Page Designer Features
  - [http://wiki.eclipse.org/index.php/Visual\\_Page\\_Designer](http://wiki.eclipse.org/index.php/Visual_Page_Designer)
- Please send us your feedback, requirements and issues at
  - Newsgroup: [eclipse.webtools.jsf](mailto:eclipse.webtools.jsf)
  - Mailing list: [wtp-jsf-dev@eclipse.org](mailto:wtp-jsf-dev@eclipse.org)
  - Bugzilla:  
[https://bugs.eclipse.org/bugs/enter\\_bug.cgi?product=Java%20Server%20Faces](https://bugs.eclipse.org/bugs/enter_bug.cgi?product=Java%20Server%20Faces)

# Resources



- JSF Tools Project Home
  - <http://www.eclipse.org/webtools/jsf>
- JSF Tools Project Wiki
  - [http://wiki.eclipse.org/index.php/JSF\\_Tools\\_Project](http://wiki.eclipse.org/index.php/JSF_Tools_Project)
- Visual Page Designer Features
  - [http://wiki.eclipse.org/index.php/Visual\\_Page\\_Designer](http://wiki.eclipse.org/index.php/Visual_Page_Designer)
- Please send us your feedback, requirements and issues at
  - Newsgroup: [eclipse.webtools.jsf](mailto:eclipse.webtools.jsf)
  - Mailing list: [wtp-jsf-dev@eclipse.org](mailto:wtp-jsf-dev@eclipse.org)
  - Bugzilla:  
[https://bugs.eclipse.org/bugs/enter\\_bug.cgi?product=Java%20Server%20Faces](https://bugs.eclipse.org/bugs/enter_bug.cgi?product=Java%20Server%20Faces)

# Q&A

