

# Getting started with Eclipse Accessibility Tools Framework (ACTF)

## 1. What is ACTF?

The Accessibility Tools Framework (ACTF) is an incubation project that is a subproject of the Eclipse Technology Project.

ACTF is a framework that serves as an extensible infrastructure upon which developers can build a variety of utilities that help to evaluate and enhance the accessibility of applications and content for people with disabilities. A collection of example utilities will also be provided which were created on top of the framework such as compliance validation tools, assistive technology simulation applications, usability visualization tools, unit-testing utilities, and alternative accessible interfaces for applications. The ACTF componentry and the utilities will be integrated into a single tooling environment on top of the Eclipse framework. The framework components will function cooperatively with each other and with other Eclipse projects to provide a comprehensive development environment for creating accessible applications and content.

For more details about the ACTF project, please visit ACTF home page!

<http://www.eclipse.org/actf>

## 2. How to configure your development environment

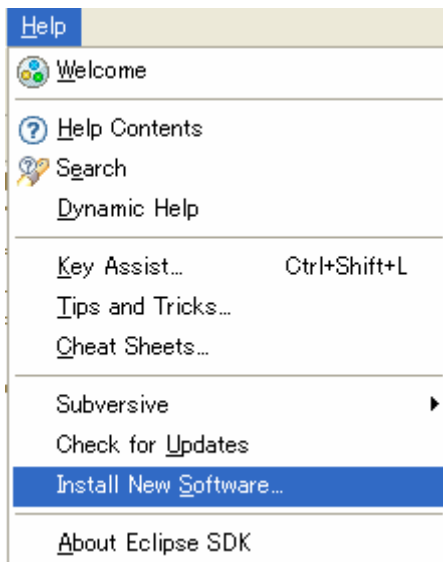
### 2.1 System requirements

- ✓ Operating Systems  
Windows® XP or above
- ✓ Software
  - **Eclipse 3.6**  
<http://www.eclipse.org/downloads>  
(Eclipse Classic package is recommended)
  - **Java Runtime Environment (JRE) 5.0 or above**  
[http://java.sun.com/javase/downloads/index\\_jdk5.jsp](http://java.sun.com/javase/downloads/index_jdk5.jsp)  
<http://java.sun.com/javase/downloads/index.jsp>  
(see <http://www.eclipse.org/downloads/moreinfo/jre.php> for more details)
  - Internet Explorer 6.0 or above
  - For Flash content access: Adobe® Flash Player, Version 8 or above  
<http://www.adobe.com/go/getflashplayer>
  - For OOo Editor: OpenOffice.org 3.0.1 or above  
<http://www.openoffice.org>

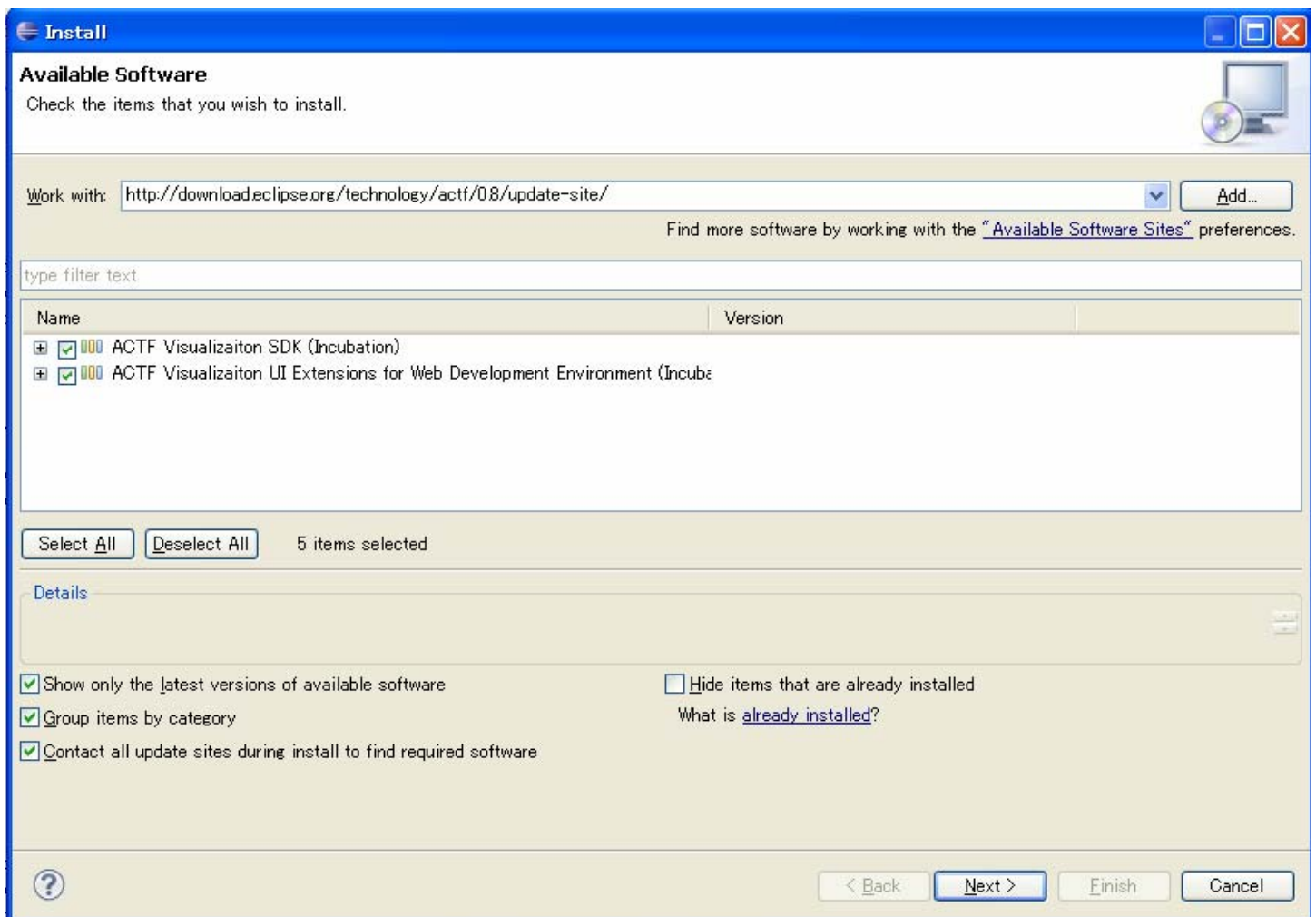
### 2.2. Installation of ACTF Visualization SDK

You can install ACTF Visualization SDK by using Eclipse Update mechanism.

Step 1: Select **Help -> Install New Software** menu.



Step 2: Type ACTF update-site URL (<http://download.eclipse.org/technology/actf/0.8/update-site>) into “Work with:” input box.



Step 3: Select ACTF Visualization SDK, and press **Next** button. Then, please follow instruction of the update wizard.

### 3. Getting started with ACTF SDKs

1. Download zipped Team Project Set file for examples.

<http://www.eclipse.org/downloads/download.php?file=/technology/actf/psf/anonymous/actf-examples.zip>

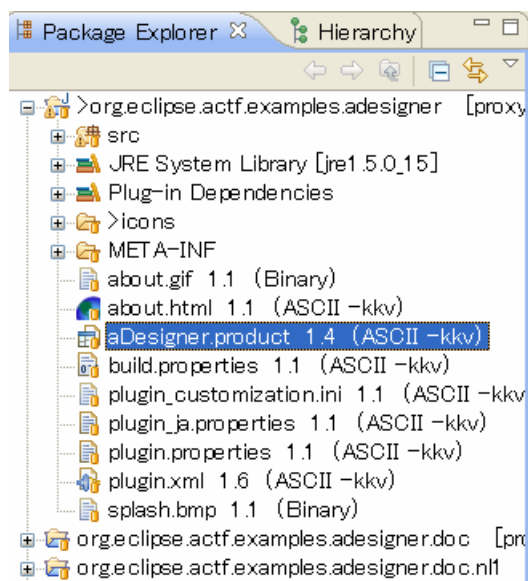
2. Unzip the downloaded file and import Team Project Set file (\*.psf) from Eclipse's 'File' -> 'Import' -> 'Team' -> 'Team Project Set' menu. (id: anonymous, password: ""(null))

3. Launch example applications

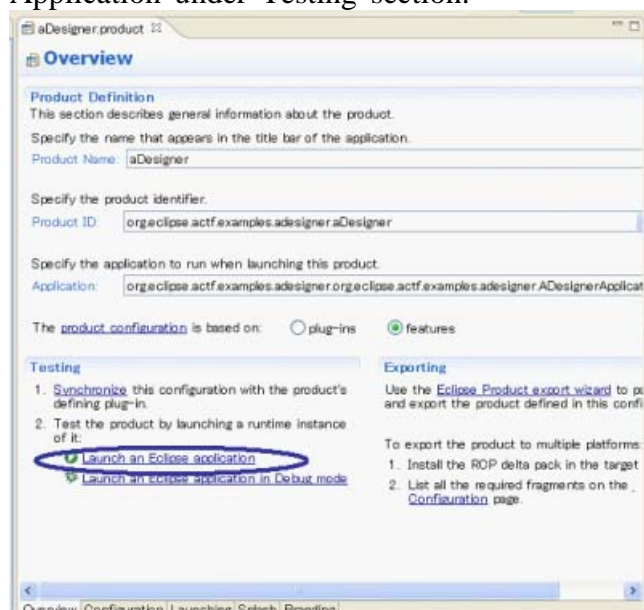
Select and open one of example application project below:

org.eclipse.actf.examples.adesigner : accessibility visualization tool aDesigner (with Help )

org.eclipse.actf.examples.simplevisualizer : visualization example application



Then, select (double click) \*.product file and open it in a product editor. In the editor, select 'Launch an Eclipse Application' under 'Testing' section.



(For more details about example applications, please see presentation charts. Online-help is also included in aDesigner application. Please select 'Help' menu in the application.)

#### 4. Build examples

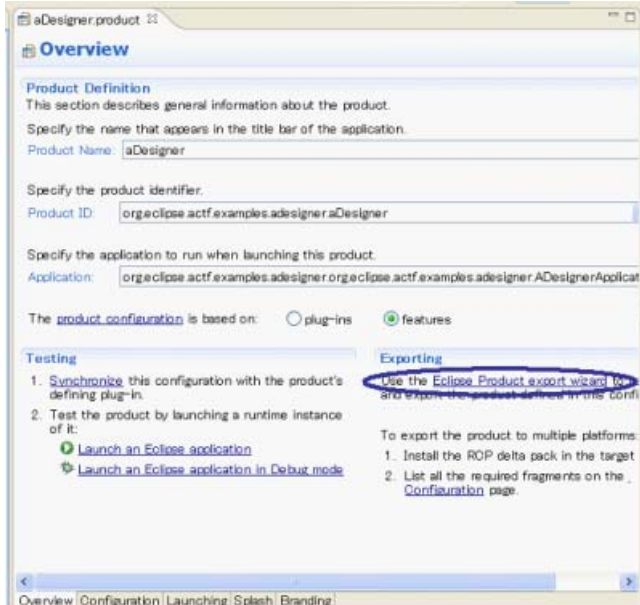
Select and open one of example application project below and select \*.product file as in step 3.

org.eclipse.actf.examples.adesigner

org.eclipse.actf.examples.aibrowser

org.eclipse.actf.examples.simplevisualizer

Open an export product wizard by selecting 'Eclipse product export wizard' under 'Exporting' section and follow the wizard.



#### 4. Access to ACTF source code

Anyone can access to ACTF CVS repository. Please visit the ACTF Contributors Information page below and get ACTF source code.

<http://www.eclipse.org/actf/contributors.php>

#### 5. Communication with ACTF team

##### 5.1 Bug report

If you find any issues, please submit a bug report from URL below:

[https://bugs.eclipse.org/bugs/enter\\_bug.cgi?product=ACTF](https://bugs.eclipse.org/bugs/enter_bug.cgi?product=ACTF)

(Please create your bugzilla account from <https://bugs.eclipse.org/bugs/createaccount.cgi> )

You can also attach your change as patch file.

Please export your change by using “Team”->”Create Patch” menu, and attach the file to bugzilla entry.

##### 5.2 Questions and feedbacks

If you have any questions or feedbacks about ACTF, please post it to our News Group.

<http://www.eclipse.org/newsportal/thread.php?group=eclipse.technology.actf>

You can post your message by using “New message” and/or “Reply to this” menu.

(Please create your bugzilla account from <https://bugs.eclipse.org/bugs/createaccount.cgi> )

### 5.3 Development discussions

If you want to get more involved into ACTF development discussions, please join the actf-dev Mailing List from URL below.

<https://dev.eclipse.org/mailman/listinfo/actf-dev>

**We are looking forward to working with you!!**